

## Boscombe Road, W12

### £625,000

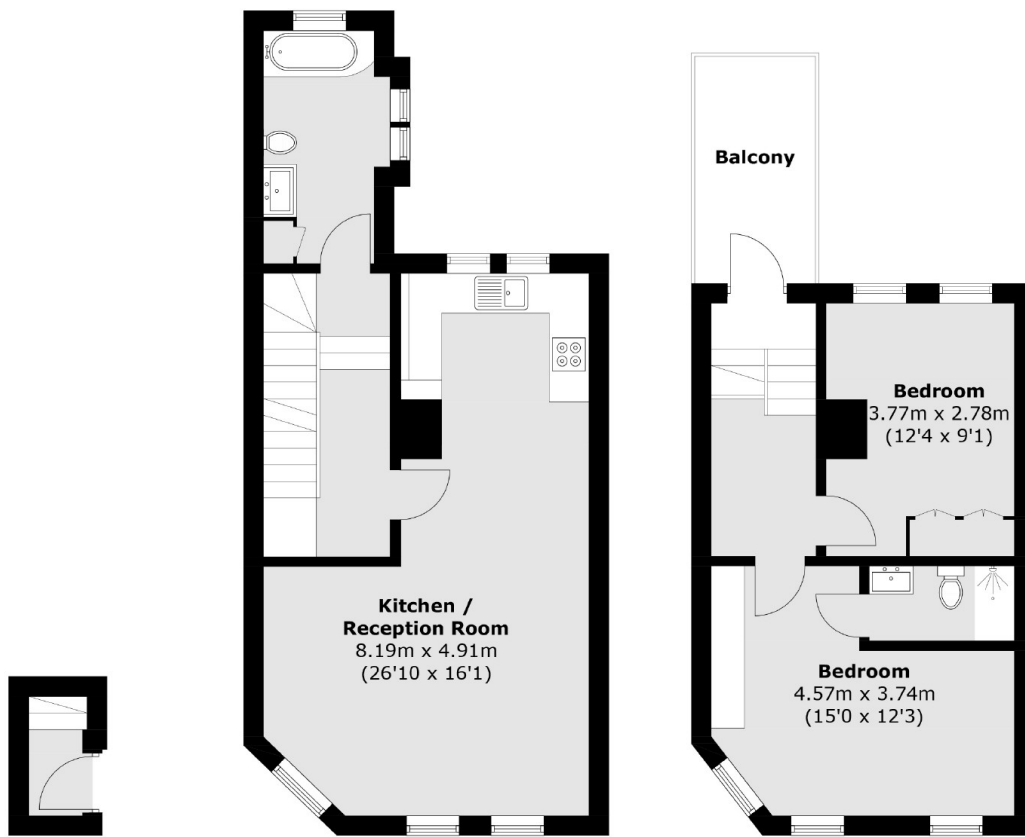
58 Boscombe Road comprises three newly converted, one and two bedroom apartments finished to a high specification, featuring Quartz kitchen work tops and floor to ceiling bathroom tiles. Each kitchen is equipped with German integrated appliances and the bedrooms fitted with bespoke wardrobes.

Only a 15 minute walk to Westfield Shepherds Bush, Boscombe Road offers access to a variety of amenities including a convenience shop on the ground floor, vibrant restaurants, bars and lively entertainment less than a mile away.

### Features

- Share of Freehold
- Located in Zone 3
- German Integrated Appliances
- 10 Year structural warranty
- 15 min walk to Westfield Shepherds Bush
- Private Outside Space
- High Ceilings
- Fantastic Specification
- Parking permit available for duplex flat

Boscombe Road,  
London, W12



**First Floor**

**Second Floor**

**Third Floor**

Total area (approx.): 82.4 sq. m (886.9 sq. ft)  
Balcony: 6.2 sq. m (66.7 sq. ft)

**Dexters**

New Homes North & East  
76 Upper Street  
London  
N1 0NU

020 7590 7299

Energy Rating: . We aim to make our particulars both accurate and reliable. However they are not guaranteed; nor do they form part of an offer or contract. If you require clarification on any points then please contact us, especially if you're traveling some distance to view. Please note that appliances and heating systems have not been tested and therefore no warranties can be given as to their good working order.

 **RICS** | Regulated  
Estate Agent  
and Letting Agent

[dexters.co.uk](https://www.dexters.co.uk)