



Osborn Street, E1

£475,000

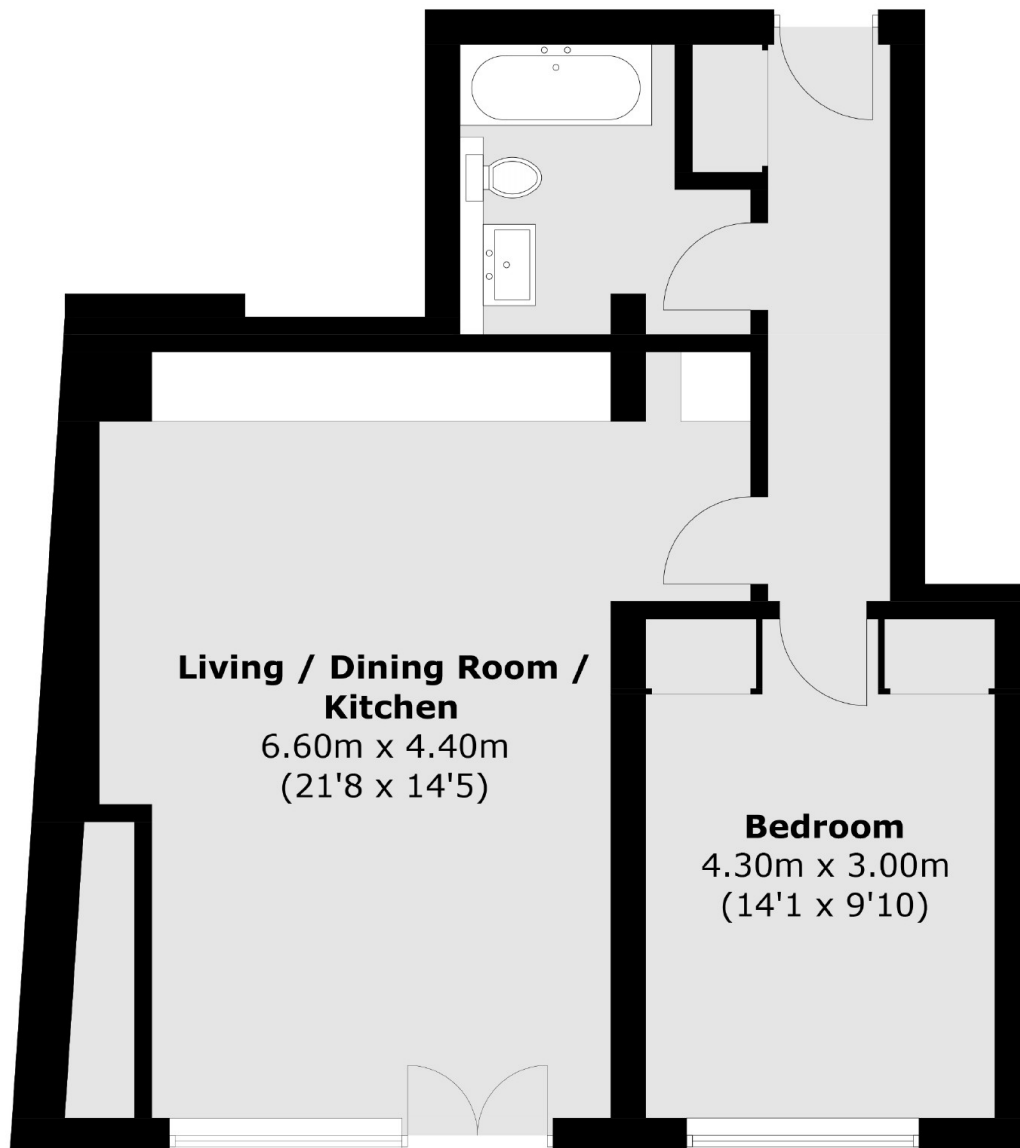
This beautifully designed, warehouse style one bedroom apartment is located on the 1st floor of The Osborn Apartments. The Osborn Apartments are an exclusive collection of 15 new warehouse style homes located in the creative and cultural melting pot of Spitalfields E1. With a reclaimed red-brick facade, clean modernist lines and Crittall style windows and doors, The Osborn Apartments are an instantly iconic addition to E1.

Located half a mile from Aldgate East, Aldgate, Liverpool Street & Whitechapel Stations.

Features

- Warehouse Inspired
- Integrated appliances
- Final Two Bedroom
- 10 Year Builders Warranty
- Energy Efficiency
- £0 Ground Rent

**Osborn Street,
London, E1**



First Floor - Flat 4

Total area (approx.): 55.0 sq. m (592.0 sq. ft)