

## Burrows Mews, SE1

£540,000

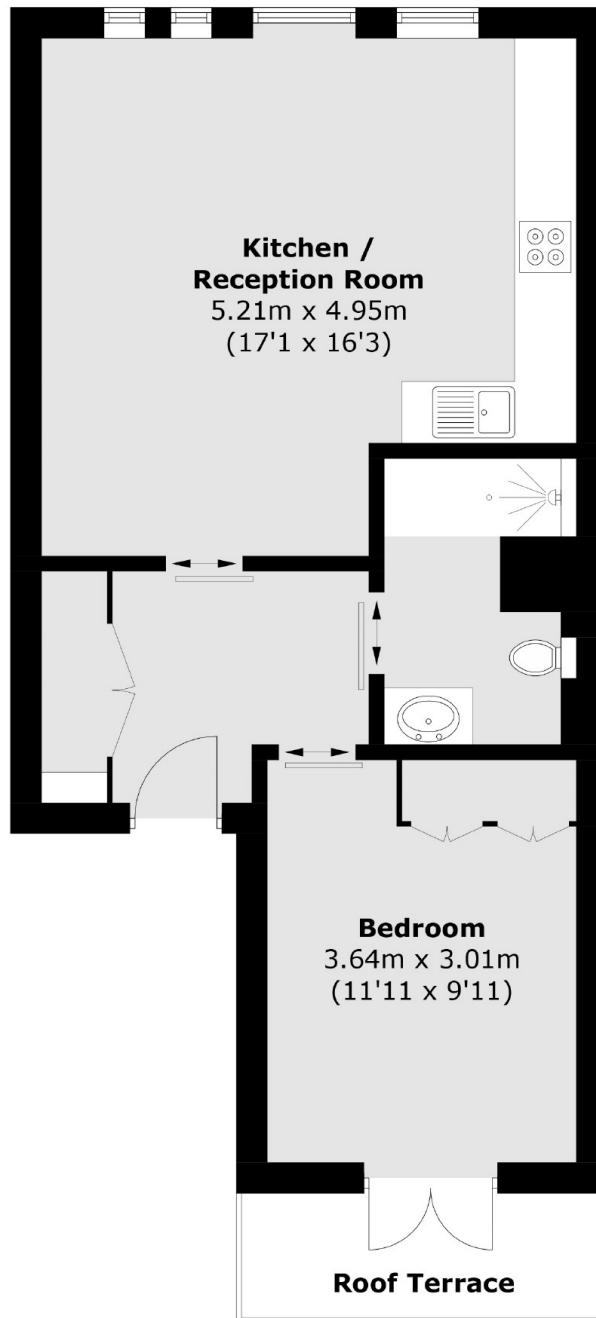
Inspired by the London Bridge industrial history, Loha House is a collection of three brand new apartments, just moments walk to Waterloo. Each apartment is complete with engineered oak flooring, Bosch appliances and built in wardrobes to bedrooms. This fantastic second floor apartment enjoys open plan living, double bedroom with direct balcony access.

Just a short walk away, London Bridge is a major transport hub offering Northern and Jubilee underground connections and national rail. Several bus routes provide easy access to various parts of the city. The Thames Clipper river bus service is accessible from London Bridge City Pier, offering a scenic and convenient way to travel along the Thames.

### Features

- New Build Apartments
- One Bedroom
- Second floor
- Bosch Appliances
- Private Balcony
- Waterloo Station 7 Mins
- 10 Year Warranty

# Burrows Mews, London, SE1



Total area (approx.): 49.9 sq. m (537.1 sq. ft)  
Roof Terrace area (approx.): 4.2 sq. m (45.2 sq. ft)