



Rotherhithe Street, SE16

£695,000

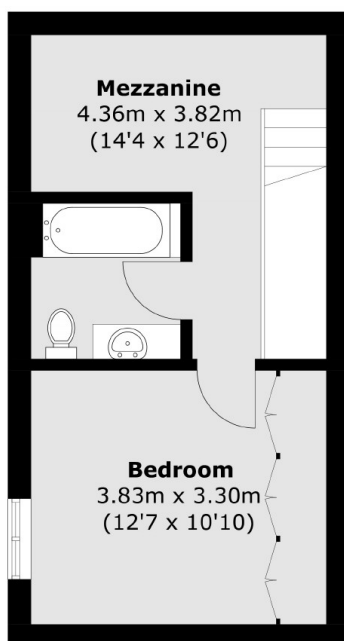
This generously sized two-bedroom duplex apartment, designed by award-winning architects, features a serene, tree-lined view of the park from a private balcony. Meticulous details, such as Buster & Punch ironmongery and lofty ceiling heights in the living areas, elevate the design and comfort. The apartment offers an open-plan living area that flows into the kitchen, spacious double bedrooms, and an ideal space for a study.

The Clipper is well connected with 24 hour bus routes giving direct access to London Bridge & Bermondsey as well as The Thames Clipper operating directly over to Canary Wharf. Closest station is Rotherhithe which runs Overground trains to East & North London.

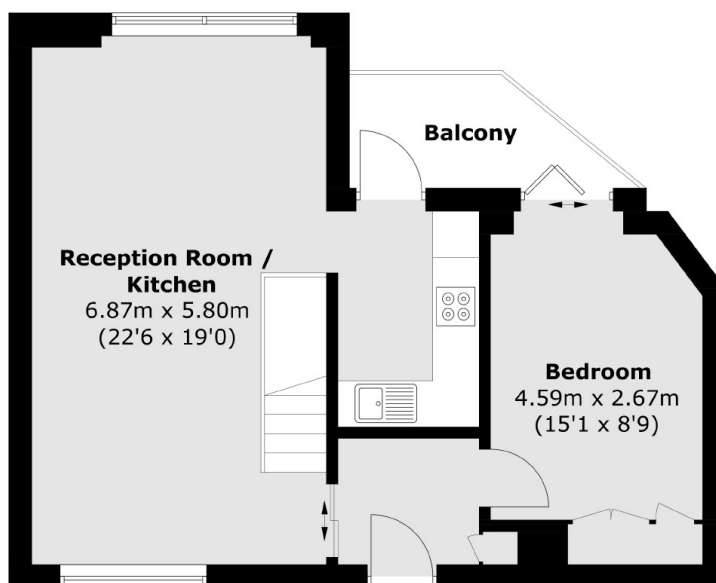
Features

- Brand New Build
- Final Apartment
- Two Double Bedrooms
- Park Views
- Boutique Scheme
- 10 Year New Build Warranty

Rotherhithe Street, London, SE16



Second Floor



First Floor

Total area (approx.): 77.8 sq. m (837.4 sq. ft)
Balcony: 4.2 sq. m (45.2 sq. ft)