



## Vauxhall Street, SE11

£500,000

This one bedroom flat is on the first floor and features an open plan living room with a fully equipped kitchen. There is a huge communal roof terrace with views across the London skyline. There is a lift in the building and you are extremely close to both Vauxhall and London Bridge

This thriving and vibrant area is enjoying one of London's most exciting transformations with this new development taking pride of place. With unparalleled connections for travel, both in and out of the city, Vauxhall is quickly becoming a desirable base for anyone wanting to live in the heart of the capital.

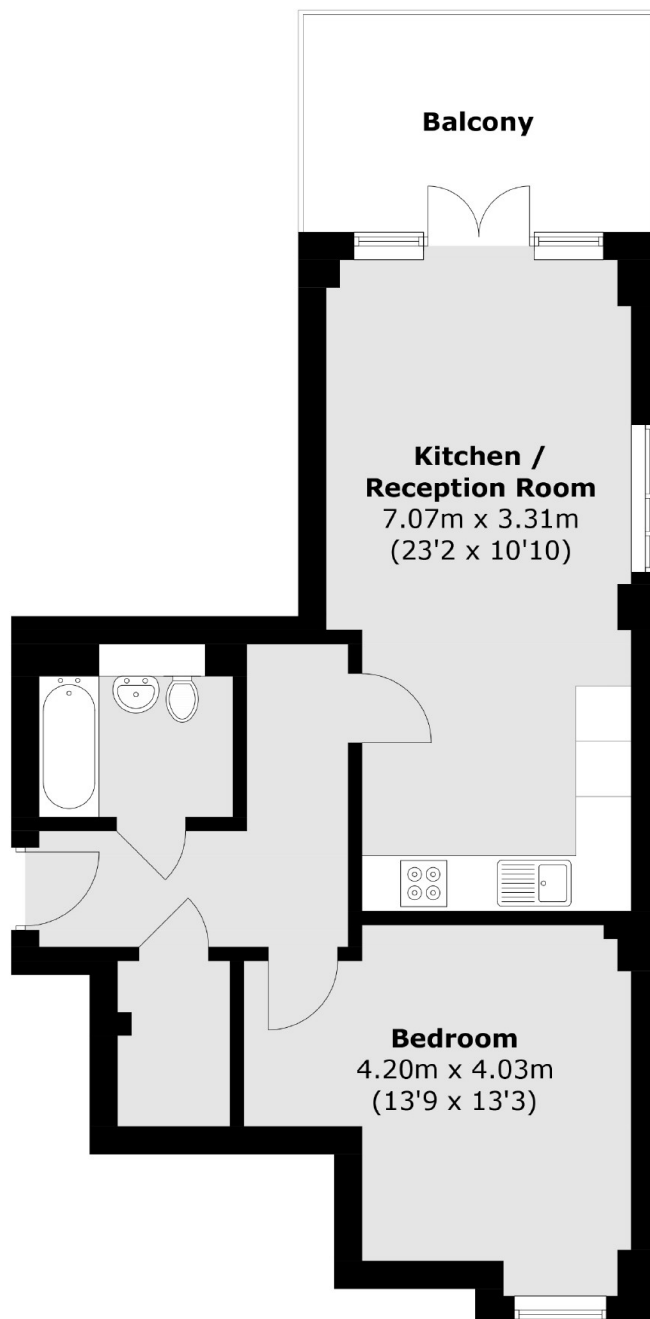
\*Built by an award winning developer.\*

Vauxhall Street is close to the highly anticipated Oval Village and Vauxhall Station, offering both South West Railway and Victoria Line services. There is a wide range of pubs, restaurants and cafes locally. Convenient for Kennington, Waterloo and Battersea.

### Features

- One Bedroom
- Lift In Block - New Build
- Huge Communal Roof Terrace
- Brilliant Transport Links
- Near To Elephant & Castle
- Near To Vauxhall

Vauxhall Street,  
London, SE11



Total area (approx.):50.8 sq. m (546.8 sq. ft)  
Balcony (approx.):5.9 sq. m (63.5 sq. ft)

**Dexters**

New Homes North & East  
76 Upper Street  
London  
N1 0NU

020 7590 7299

Energy Rating: . We aim to make our particulars both accurate and reliable. However they are not guaranteed; nor do they form part of an offer or contract. If you require clarification on any points then please contact us, especially if you're traveling some distance to view. Please note that appliances and heating systems have not been tested and therefore no warranties can be given as to their good working order.

 **RICS** | Regulated  
Estate Agent  
and Letting Agent

dexters.co.uk