



Highgate Road, NW5

£1,600,000

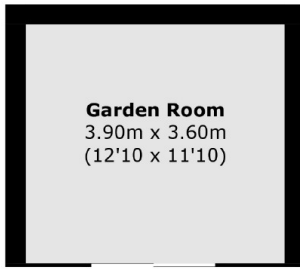
This house comprises three double bedrooms with an additional study/fourth bedroom, three bathrooms, a kitchen with a separate utility room and a large reception room which flows seamlessly out to the terraced garden and garden room - a perfect gym or play room. A key point to note, The garden room is complete with Islington Oak flooring, Underfloor heating and Electricity.

Located on Highgate Road, The Arches is eight minutes' walk from Swains Lane and Hampstead Heath, with over 800 acres of wild parkland and lush meadows, boasting some of the most spectacular views in the city.

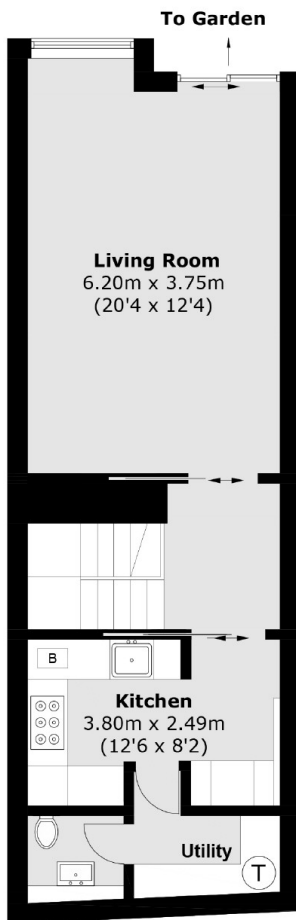
Features

- Efficient Energy Rating
- Approx 1400sqft Living Area
- Garden Room
- High specification
- Underfloor Heating
- Up to 3.5m ceilings

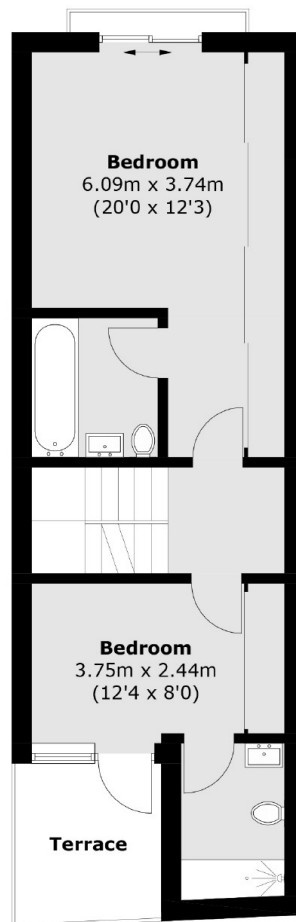
Highgate Road, London, NW5



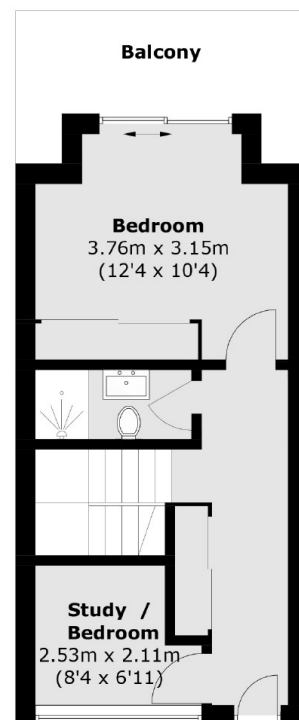
(Not Shown In Actual
Location / Orientation)



Lower Ground Floor



Ground Floor



Upper Ground Floor

Total area (approx.): 122.7 sq. m (1,320.7 sq. ft)
 Garden Room : 14.0 sq. m (150.7 sq. ft)
 Total Including Garden Room : 136.7 sq. m (1,471.4 sq. ft)
 Terrace / Balcony area: 13.1 sq. m (141.0 sq. ft)