

Torriano Mews, NW5

£725,000

This newly converted building in the popular Torriano Mews features three thoughtfully designed apartments, each filled with natural light. They boast high-quality finishes including engineered oak flooring, Bosch appliances, Quartz stone counter tops, and floor-to-ceiling bathroom tiles. This ground floor two bedroom apartment offers a fantastic open plan living space, two double bedrooms and two bathrooms.

Situated in a quiet area, this property is conveniently located near Northern Line and Overground stations, as well as numerous shops, restaurants, and facilities in Kentish Town. Hampstead Heath is also nearby, ideal for walks and amazing views of the city.

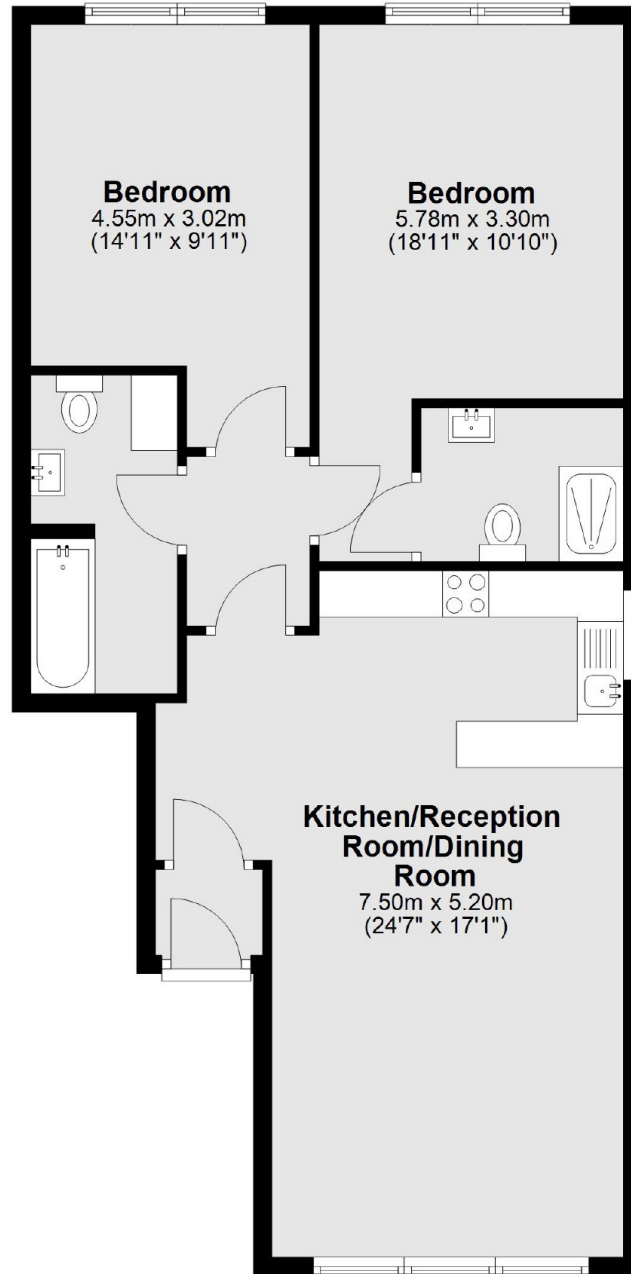
Features

Two Double Bedrooms

Northern Line
Euston 2 Stops
New Build Warranty
Ready Now!

Torriano Mews, London, NW5

Ground Floor



Total area: approx. 73.3 sq. metres (789.4 sq. feet)