



Burrows Mews, SE1

£650,000

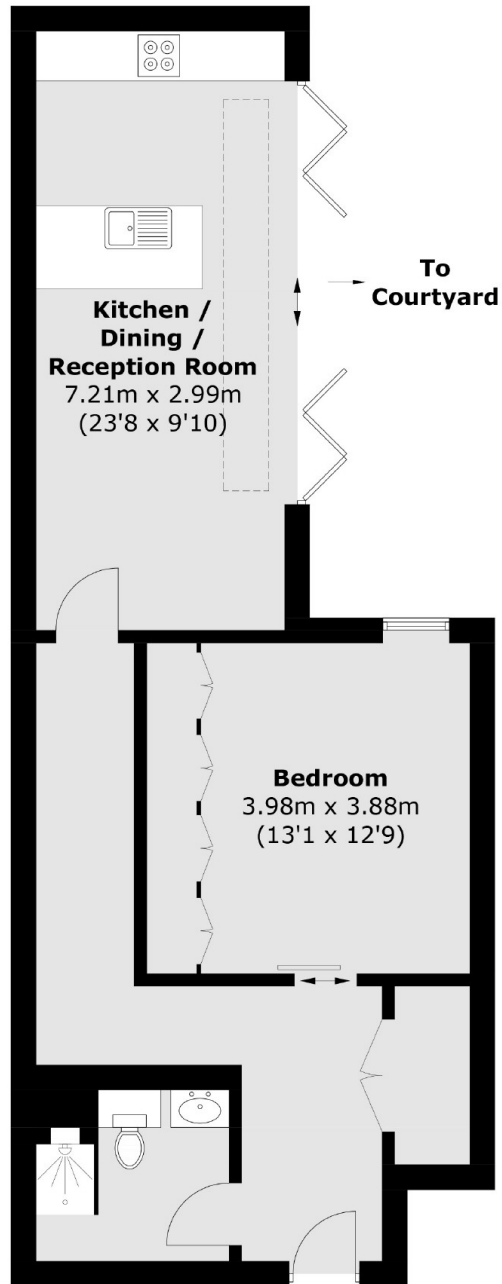
Inspired by the London Bridge industrial history, Loha House is a collection of three brand new apartments, just moments walk to Waterloo. This impressive ground floor apartment enjoys fantastic natural light, open plan living room with bi-fold doors leading onto private outside terrace. The kitchen is complete with Bosch appliances, breakfast bar under counter lighting. The bedroom enjoys built in wardrobes, whilst the bathroom is complete with walk in shower.

Just a short walk away, London Bridge is a major transport hub offering Northern and Jubilee underground connections and national rail. Several bus routes provide easy access to various parts of the city. The Thames Clipper river bus service is accessible from London Bridge City Pier, offering a scenic and convenient way to travel along the Thames.

Features

- New Build Apartments
- Quiet Location
- Waterloo Station 7 Mins
- Engineered Oak Flooring
- Bosch Appliances
- 10 Year Warranty

Burrows Mews, London, SE1



Total area (approx.): 60.6 sq. m (652.2 sq. ft)