



Burrows Mews, SE1

£540,000

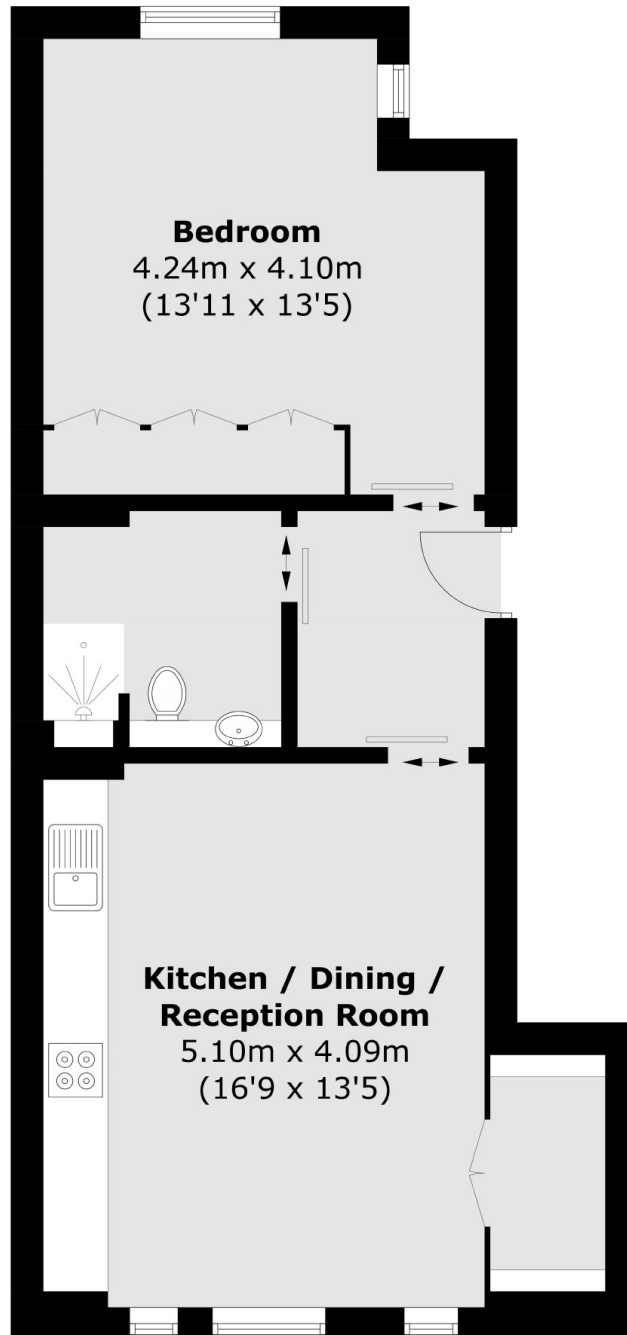
Inspired by the London Bridge industrial history, Loha House is a collection of three brand new apartments, just moments walk to Waterloo. This first floor apartment enjoys an open plan living room. The kitchen is complete with Bosch appliances, under counter lighting. The bedroom enjoys built in wardrobes, whilst the bathroom is complete with walk in shower.

Just a short walk away, London Bridge is a major transport hub offering Northern and Jubilee underground connections and national rail. Several bus routes provide easy access to various parts of the city. The Thames Clipper river bus service is accessible from London Bridge City Pier, offering a scenic and convenient way to travel along the Thames.

Features

- New Build Apartments
- Quiet Location
- Waterloo Station 7 Mins
- Engineered Oak Flooring
- Bosch Appliances
- 10 Year Warranty

Burrows Mews, London, SE1



Total area (approx.): 49.9 sq. m (537.1 sq. ft)