



Mosaic, NW10

£725,000

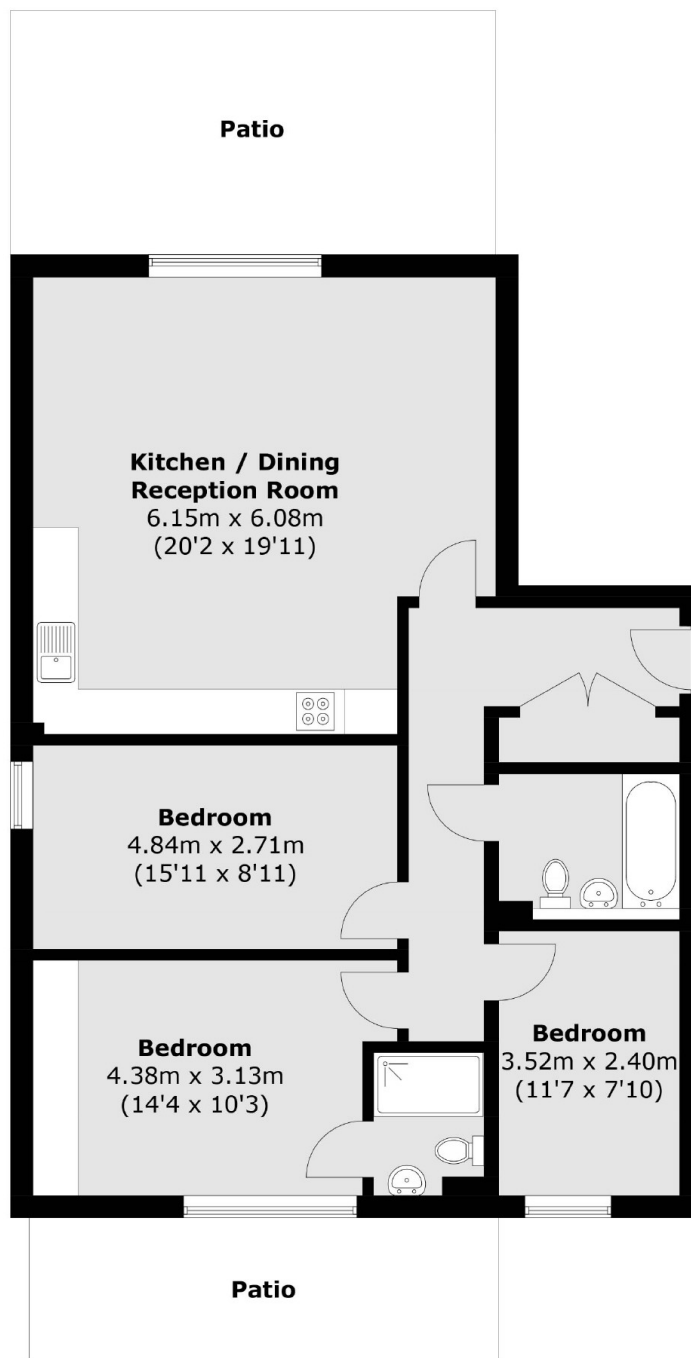
Welcome to Mosaic, an impressive collection of nine apartments tucked peacefully near Roundwood Park. This apartment features a remarkable open-plan living area with direct access to a private southeast-facing garden, complete with outdoor lighting. The kitchen is equipped with German Hacker true handleless cabinets, quartz worktops, and a filtered water tap. The principal bedroom is generously sized and includes an ensuite bathroom and terrace. Bedrooms two and three are both double rooms, and the bathroom is finished with tiled walls, a vanity cupboard, and Coalbrook taps.

Dollis Hill underground station is within easy walking distance. From there, you can hop on the Jubilee Line, reaching Wembley Park in just 4 minutes or Bond Street and the West End in 15 minutes. Additionally, the development is conveniently situated near Roundwood Park and Gladstone Park, which offers abundant greenery, ponds, and tennis courts for outdoor recreation.

Features

Brand New Development
Three Bedroom Apartment
Private Garden
Jubilee Line
Baker Street 12 Minutes
Green Park 16 Minutes
10 Year Warranty

Mosaic, London, NW10



Ground Floor

Total area (approx.): 93.2 sq. m (1,003.2 sq. ft)