



## Mosaic, NW10

£465,000

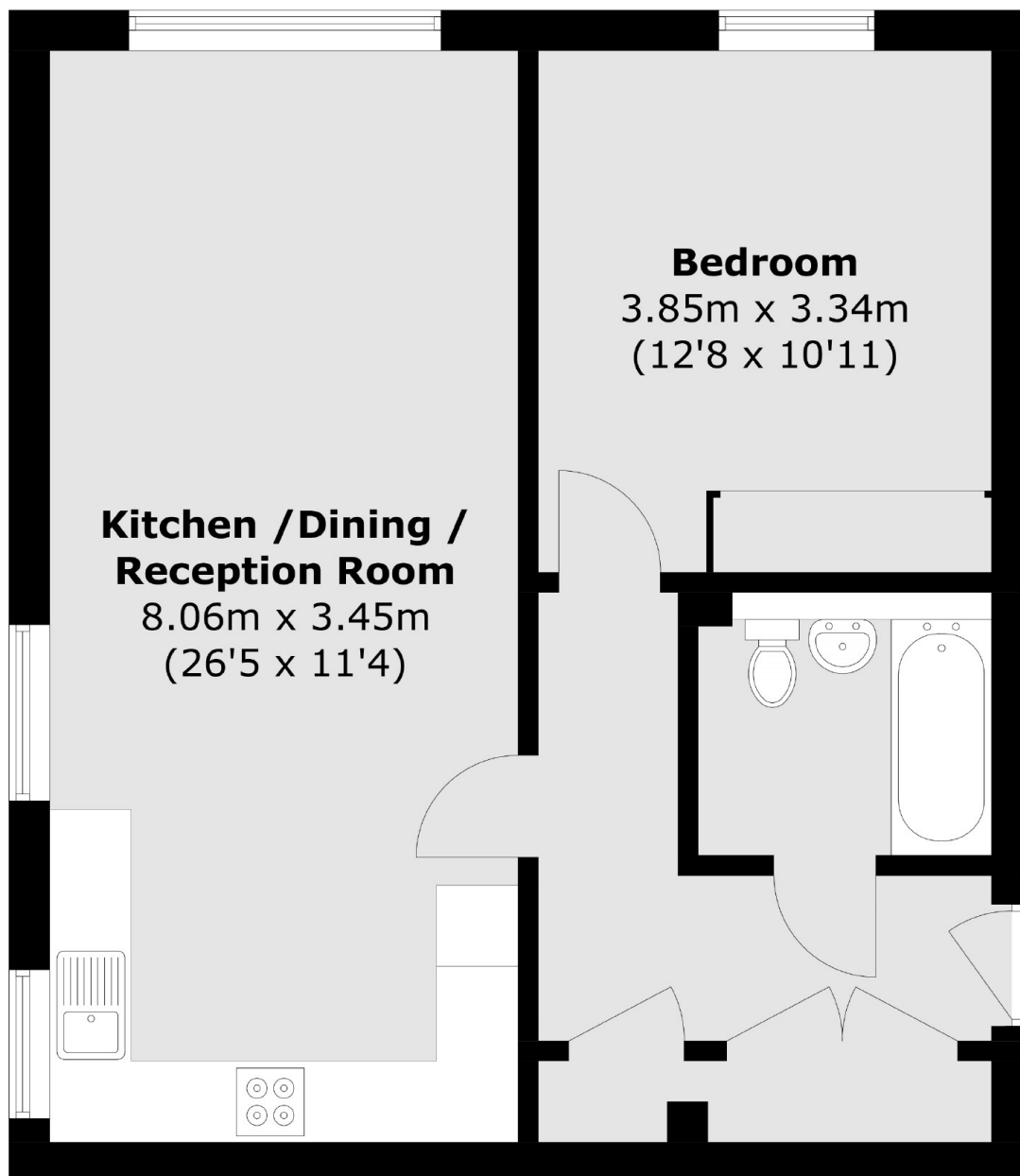
Welcome to Mosaic, an impressive collection of nine apartments tucked peacefully near Roundwood Park. This apartment features an open-plan living area with direct access to a private garden, complete with outdoor lighting. The kitchen is equipped with German Hacker true handless kitchens, quartz worktops, and a filtered water tap. The bedroom is generously sized, and the bathroom is finished with tiled walls, a vanity cupboard, and Coalbrook taps.

Dollis Hill underground station is within easy walking distance. From there, you can hop on the Jubilee Line, reaching Wembley Park in just 4 minutes or Bond Street and the West End in 15 minutes. Additionally, the development is conveniently situated near Roundwood Park and Gladstone Park, which offers abundant greenery, ponds, and tennis courts for outdoor recreation.

### Features

- Brand New Development
- One Bedroom
- Private Garden
- Jubilee Line
- Baker Street 12 Minutes
- Green Park 16 Minutes
- 10 Year Warranty

Mosaic,  
London, NW10



## Ground Floor

Total area (approx.): 54.4 sq. m (585.5 sq. ft)

**Dexters**

Kensal Rise & Queen's Park  
62 Chamberlayne Road  
London  
NW10 3JJ  
Sales  
020 8600 3100

Energy Rating: . We aim to make our particulars both accurate and reliable. However they are not guaranteed; nor do they form part of an offer or contract. If you require clarification on any points then please contact us, especially if you're traveling some distance to view. Please note that appliances and heating systems have not been tested and therefore no warranties can be given as to their good working order.

 **RICS** | Regulated  
Estate Agent  
and Letting Agent

[dexters.co.uk](http://dexters.co.uk)