



Osborn Street, E1

£575,000

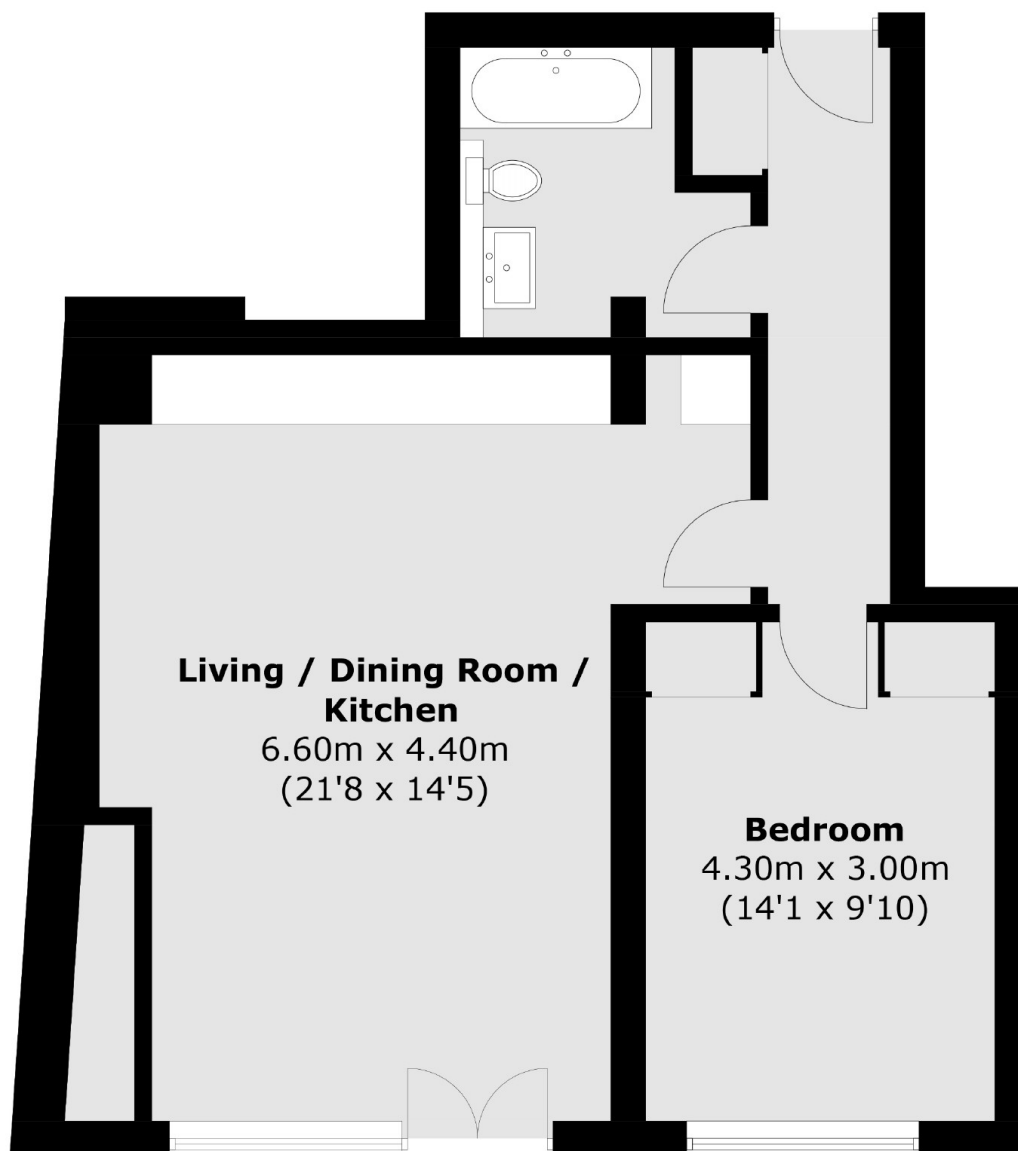
This beautifully designed, warehouse style 1 bedroom apartment is located on the 1st floor of The Osborn Apartments. The Osborn Apartments are an exclusive collection of 15 new warehouse style homes located in the creative and cultural melting pot of Spitalfields E1. With a reclaimed red-brick facade, clean modernist lines and Crittall style windows and doors, The Osborn Apartments are an instantly iconic addition to E1.

Located within a 5 minute walk of Aldgate East, Aldgate, Liverpool Street & Whitechapel Stations.

Features

- 1 Bedroom Apartment
- 2nd floor
- Warehouse Style
- High Quality Finish
- Under Floor Heating
- Juliet Balcony

**Osborn Street,
London, E1**



First Floor - Flat 4

Total area (approx.): 55.0 sq. m (592.0 sq. ft)

Dexters

New Homes North & East
76 Upper Street
London
N1 0NU

020 7590 7299

Energy Rating: - We aim to make our particulars both accurate and reliable. However they are not guaranteed; nor do they form part of an offer or contract. If you require clarification on any points then please contact us, especially if you're traveling some distance to view. Please note that appliances and heating systems have not been tested and therefore no warranties can be given as to their good working order.

 **RICS** | Regulated
Estate Agent
and Letting Agent

dexters.co.uk