



Hetley Road, W12

£550,000

This newly converted two bedroom garden flat offers a fantastic specification, two double bedrooms and private patio garden.

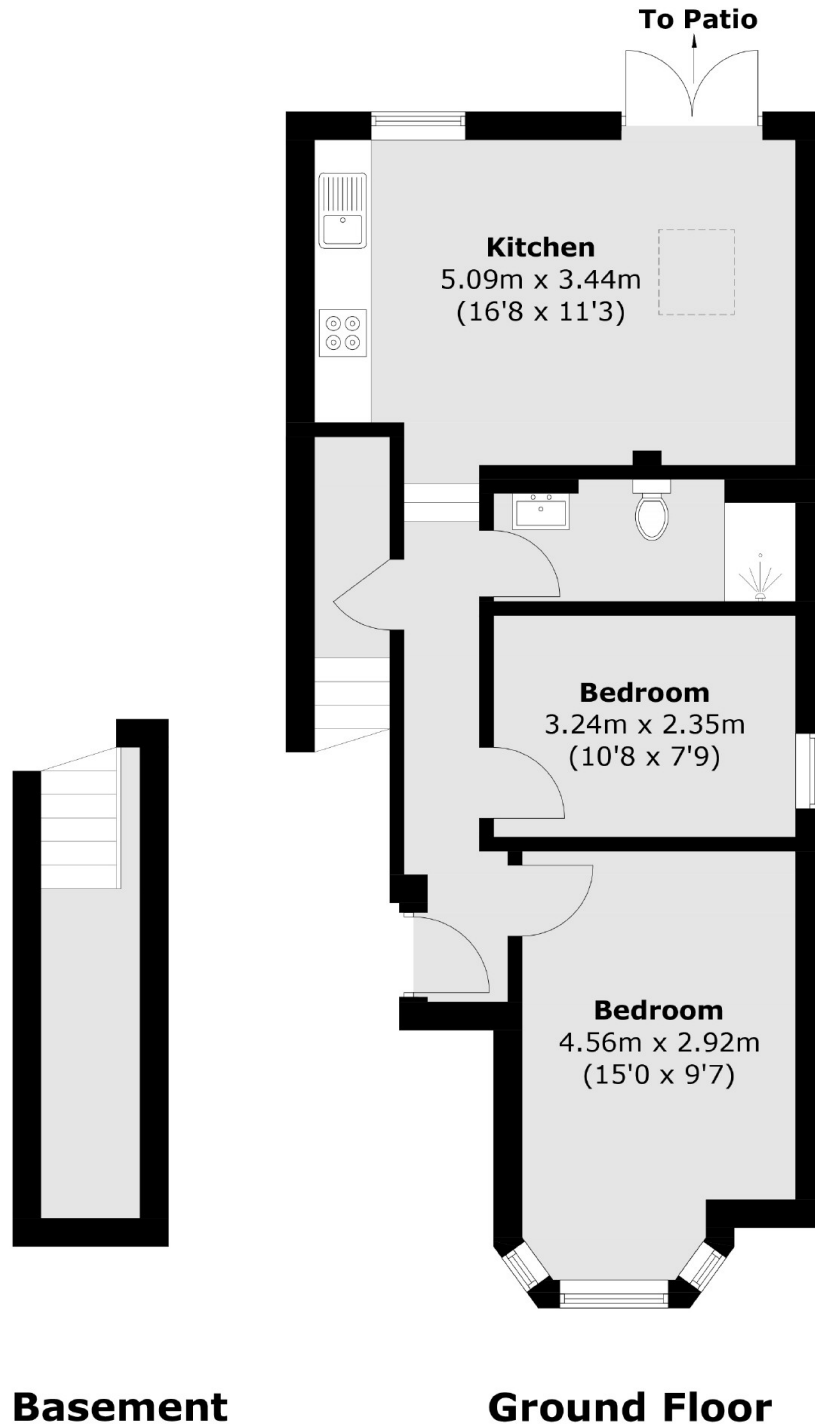
The open plan living room is complete with engineered oak herringbone floor and large sash windows. The bespoke kitchen includes Samsung appliances and quartz worktop. Bathrooms enjoy floor to ceiling tiles, vanity mirror and storage. Permit parking is available.

Hetley Road is close to both Shepherd's Bush Market and Goldhawk Road Underground stations, with surrounding shops, restaurants and Westfield.

Features

Garden Flat
High Specification
10 Minutes To Westfield
Builders Warranty

Hetley Road,
London, W12



Total area (approx.): 56.7 sq. m (610.3 sq. ft)

Dexters

New Homes North & East
76 Upper Street
London
N1 0NU

020 7590 7299

Energy Rating: . We aim to make our particulars both accurate and reliable. However they are not guaranteed; nor do they form part of an offer or contract. If you require clarification on any points then please contact us, especially if you're traveling some distance to view. Please note that appliances and heating systems have not been tested and therefore no warranties can be given as to their good working order.

 **RICS** | Regulated
Estate Agent
and Letting Agent

dexters.co.uk