



Lemna Road, E11

£345,000

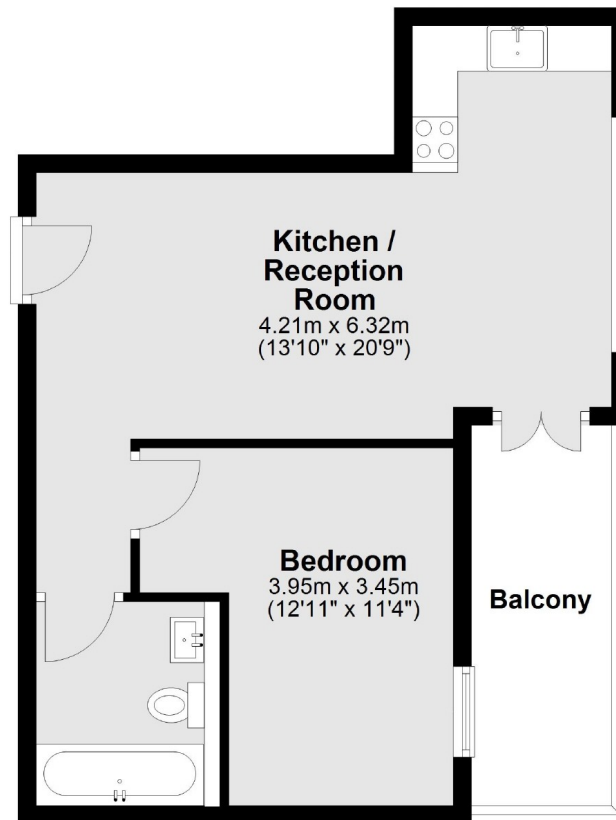
Introducing The Penthouse Collection at Robart House. This one-bedroom apartment boasts a large open-plan living room with direct access onto the southwest-facing terrace, benefiting from stunning panoramic views of the London skyline. The specification includes engineered oak flooring, Bosch appliances in the kitchen, and marble tiling in the bathroom.

Just a short walk from the Underground Station, Leytonstone offers great connectivity with the Central line. Oxford Circus, Bank, and Liverpool Street are easily accessible. Well-serviced bus routes also connect the surrounding areas. Leytonstone High street offers eclectic mix of cafes, restaurants, and boutiques as well as nearby parks and green spaces.

Features

- One Bedroom
- Wrap Around Terrace
- Brand New Apartments
- 10 Year Warranty
- Central Line

Lemna Road, London, E11



Main area: Approx. 40.1 sq. metres (432.2 sq. feet)
Plus balconies, approx. 7.1 sq. metres (75.9 sq. feet)