

Torriano Mews, NW5

£785,000

This newly converted building in the popular Torriano Mews features three thoughtfully designed apartments, each filled with natural light. They boast high-quality finishes including engineered oak flooring, Bosch appliances, Quartz stone counter tops, and floor-to-ceiling bathroom tiles. This two bedroom duplex apartment features and impressive open plan living room with double height ceiling. Two double bedrooms and two bathrooms. This apartment also benefits from parking.

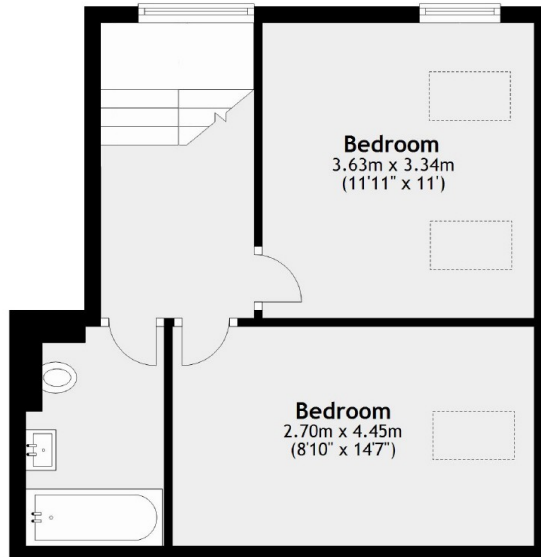
Situated in a quiet area, this property is conveniently located near Northern Line and Overground stations, as well as numerous shops, restaurants, and facilities in Kentish Town. Hampstead Heath is also nearby, ideal for walks and amazing views of the city.

Features

- Duplex Apartment
- Two Double Bedrooms
- Private Outside Space
- Bosch Appliances
- Euston 2 Stops
- 10 Year Warranty

Torriano Mews, London, NW5

First Floor



Ground Floor



Total area: approx. 79.9 sq. metres (860.5 sq. feet)