



Torriano Mews, NW5

£745,000

This newly converted building in the popular Torriano Mews features three thoughtfully designed apartments, each filled with natural light. They boast high-quality finishes including engineered oak flooring, Bosch appliances, Quartz stone counter tops, and floor-to-ceiling bathroom tiles. Some apartments also feature impressive double-height ceilings.

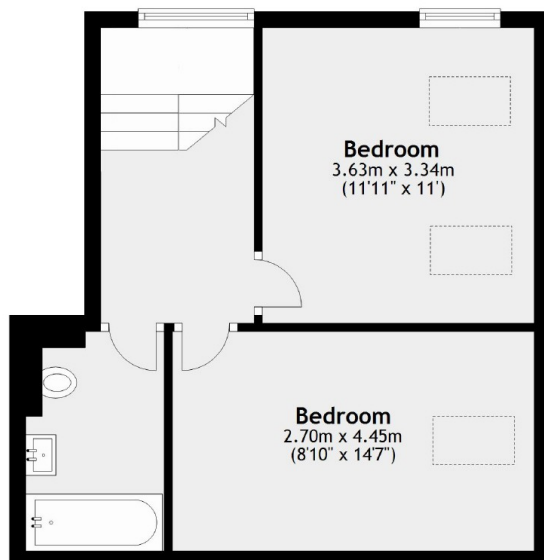
Situated in a quiet area, this property is conveniently located near Northern Line and Overground stations, as well as numerous shops, restaurants, and facilities in Kentish Town. Hampstead Heath is also nearby, ideal for walks and amazing views of the city.

Features

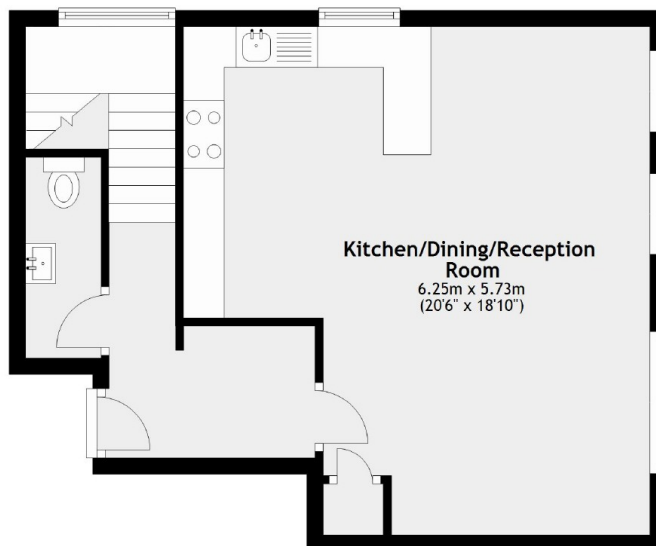
- Brand New Conversion
- Three Apartments
- One & Two Bedrooms
- Bosch Appliances
- Euston 2 Stops
- New Build Warranty

Torriano Mews, London, NW5

First Floor



Ground Floor



Total area: approx. 79.9 sq. metres (860.5 sq. feet)