



Dyer's Buildings, EC1N

£1,395,000

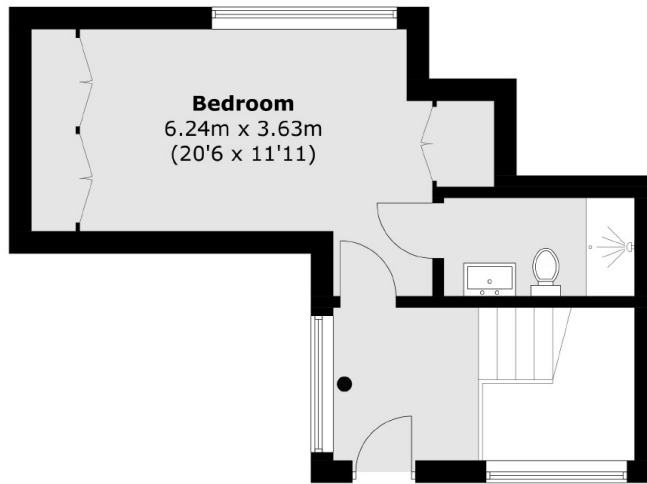
Pink Mews combines Victorian architecture and elegant contemporary interiors. Benefitting from its own private entrance, this duplex apartment offers open plan living with stunning double height ceilings, fully equipped kitchen with Miele appliances and luxury bedroom suites. The Principle bedroom is located on the ground level with built in storage and en-suite bathroom. A further bedroom, bathroom and outside space are located on the lower ground level. The development is situated beyond private gates with daytime concierge.

Pinks Mews is located close excellent transport, amenities and London's best universities. Located just 200m from Chancery Lane underground and nearby the newly opened Elizabeth Line within Farringdon Station. Pink Mews is conveniently positioned for commuters into Liverpool Street, Bond Street and Heathrow Airport.

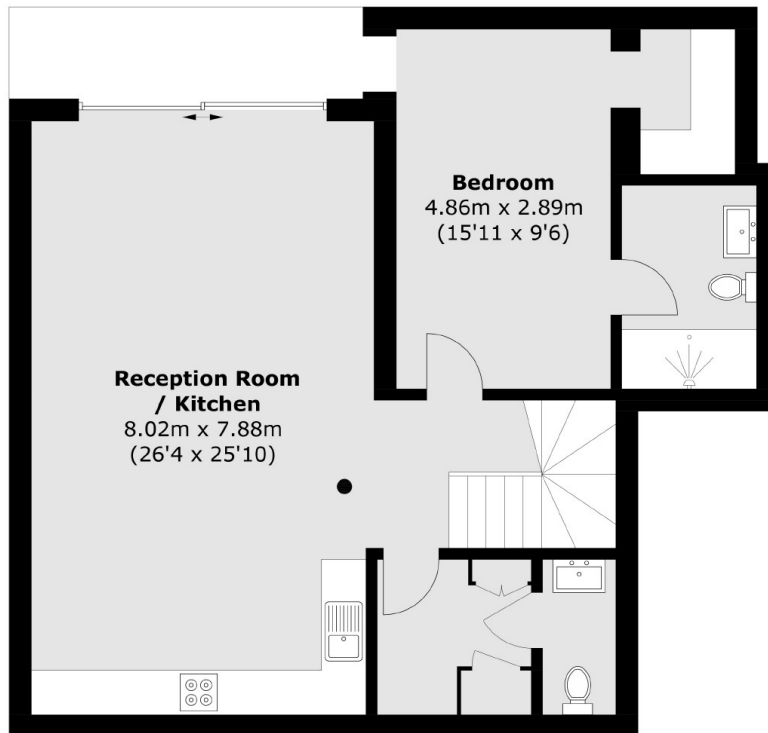
Features

- Private Mews
- 24 Hour Concierge
- Two Double Bedrooms
- Double Height Ceiling
- High Specification
- Outside Space

Dyer's Buildings, London, EC1N



Ground Floor



Lower Ground Floor

Total area (approx.): 105.4 sq. m (1,134.6 sq. ft)