

Arklow Road, SE14

£595,000

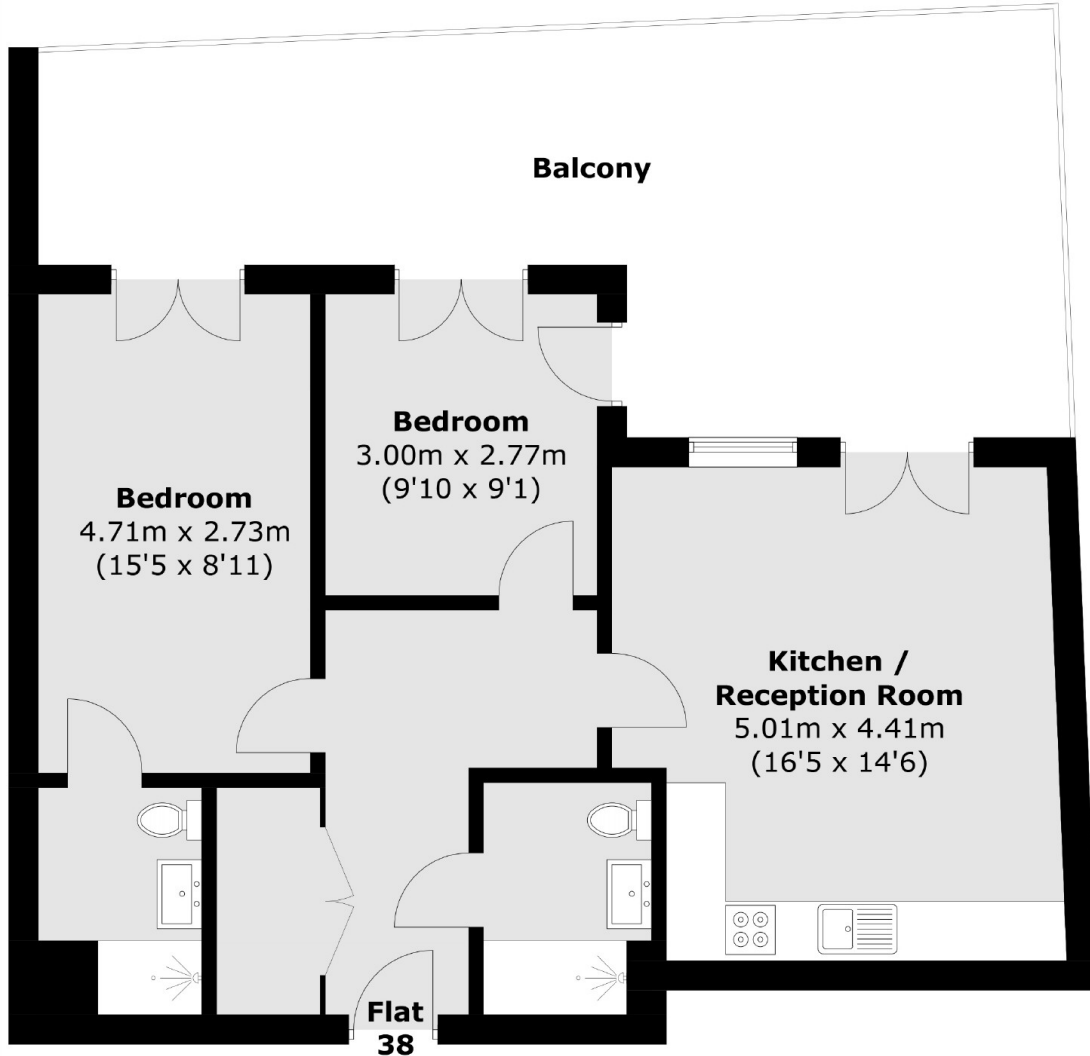
Located on the fourth floor, this two-bedroom apartment offers a large private terrace with stunning city skyline views. Astra House features well-designed bathrooms, including high-quality quartz countertops and attractive parquet flooring throughout. The apartment's open-plan layout provides a spacious living area with plenty of natural light. The kitchen is equipped with Bosch appliances, sleek handleless cupboards, and under-counter lighting, making it both functional and stylish. Both bedrooms are generous doubles with direct balcony access.

Arklow Road is conveniently located in one of South London's busiest commuter belts, within easy access to New Cross & Deptford Station. The green open spaces of both Deptford & Greenwich Park are also very nearby.

Features

- Two Double Bedrooms
- Large Private Terrace
- DLR Connection
- Thameslink Zone 2
- High Energy Efficiency
- Perfect First Time Buy
- Great Buy To Let Investment
- Large Communal Roof Terrace

Arklow Road, London, SE14



Fourth Floor

Total area (approx.): 65.7 sq. m (707.2 sq. ft)
Balcony: 32.3 sq. m (347.7 sq. ft)