

Arklow Road, SE14

£450,000

Located on the fourth floor, this one-bedroom apartment offers a private terrace with stunning city skyline views. Astra House features well-designed bathrooms, including high-quality quartz counter tops and attractive parquet flooring throughout. The apartment's open-plan layout provides a spacious living area. The kitchen is equipped with Bosch appliances, sleek handleless cupboards, and undercounter lighting, making it both functional and stylish. The bedroom enjoys plenty of natural light and includes a Juliette balcony.

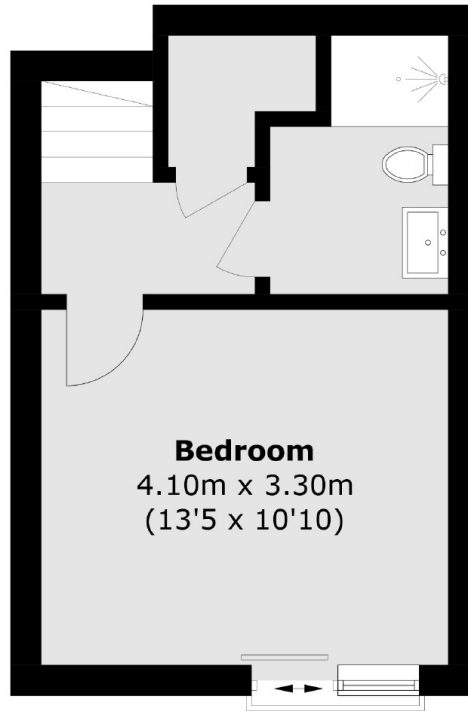
Features

- One Bedroom
- Private balcony Terrace
- High Energy Efficiency
- Perfect First Time Buy
- Great Buy To Let Investment
- Large Communal Roof Terrace

Arklow Road, London, SE14



Fourth Floor



Upper Level Fourth Floor

Total area (approx.): 52.2 sq. m (561.8 sq. ft)
Balcony : 7.9 sq. m (85.0 sq. ft)