



Kilburn Lane, W10

£800,000

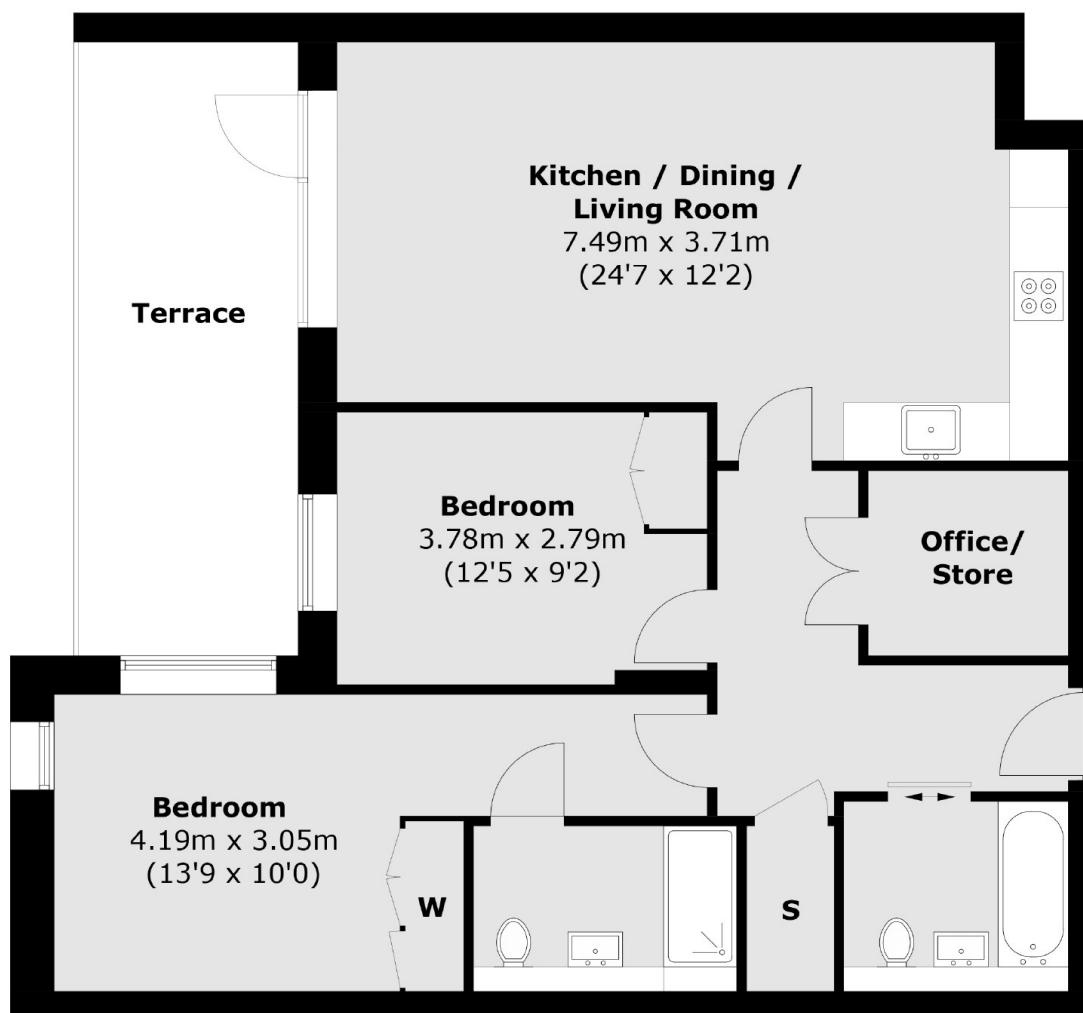
Located in Kensal Rise, this top-floor two-bedroom apartment offers a comfortable and stylish living space. The open-plan living room is bright and airy, with oak flooring and large windows that lead out to a private terrace. The kitchen is well-equipped with Bosch appliances and a Quartz worktop. The main bedroom is spacious and has its own ensuite shower room, while the second bedroom is also a good size. Additionally, there's a separate office/playroom, providing extra flexibility for work or leisure.

Just a short stroll from Queen's Park, Kensal Rise stands out as one of West London's liveliest and most artistic neighbourhoods. Nestled in the heart of this burgeoning community, famed for its youthful ambiance and array of independent shops, bars, cafés and eateries, lies The Old Dairy House. Conveniently positioned, this boutique development is a brief walk from Queens Park Station, offering both Bakerloo and Overground services.

Features

- Award Winning Developer
- Two Bedrooms
- Office / Playroom
- Top Floor Apartment
- Private Terrace
- Boutique Development
- Several Transport Links

Kilburn Lane, London, W10



Third Floor

Total area (approx.): 81.2 sq. m (874.0 sq. ft)
Terrace: 14.2 sq. m (152.8 sq. ft)