



## Lemna Road, E11

£600,000

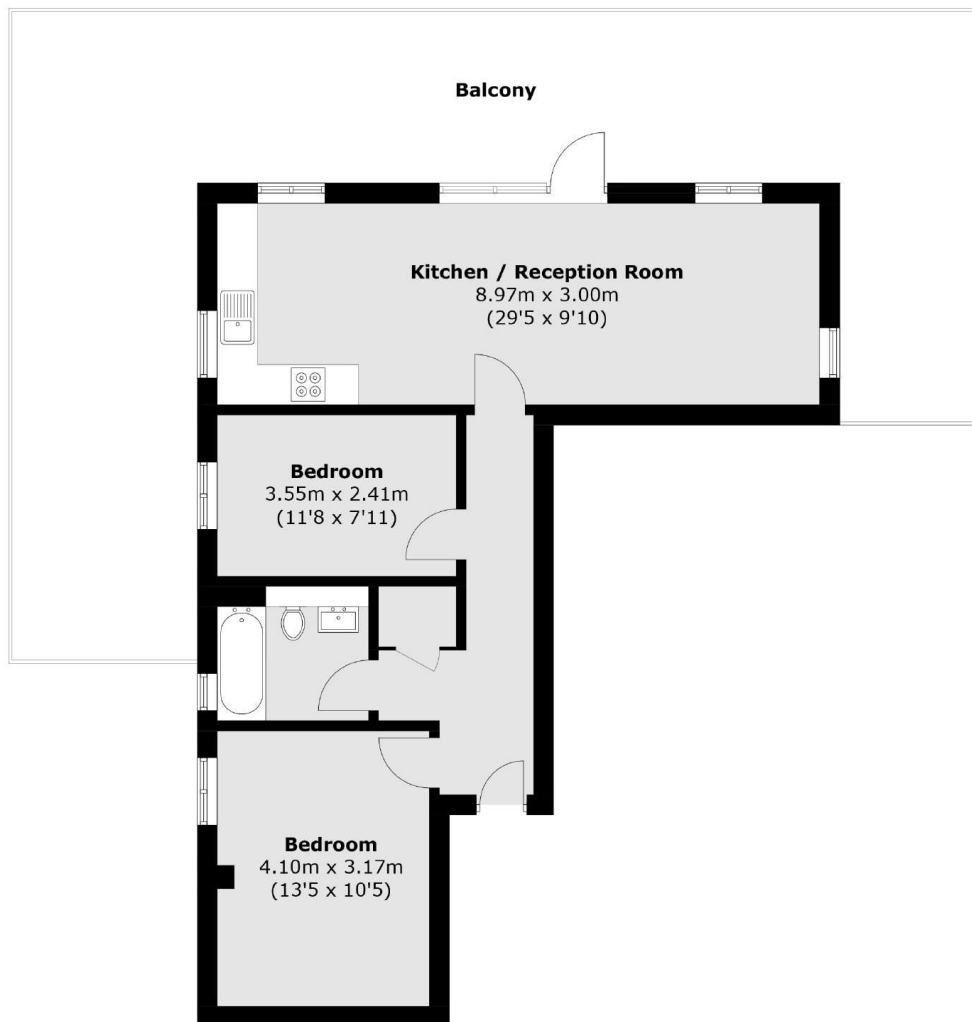
Introducing The Penthouse Collection at Robart House. This two-bedroom apartment boasts a large open-plan living room with direct access onto the southwest-facing terrace, benefiting from stunning panoramic views of the London skyline. The specification includes engineered oak flooring, Bosch appliances in the kitchen, and marble tiling in the bathroom. This apartment is truly unique with fantastic outside space.

Just a short walk from the Underground Station, Leytonstone offers great connectivity with the Central line. Oxford Circus, Bank, and Liverpool Street are easily accessible. Well-serviced bus routes also connect the surrounding areas. Leytonstone High street offers eclectic mix of cafes, restaurants, and boutiques as well as nearby parks and green spaces.

### Features

- Fantastic Terrace
- South West Facing
- Brand New Apartments
- Central Line
- 15 Minutes to Liverpool Street
- 10 Year Warranty

Lemna Road,  
London, E11



Total area (approx.): 64.5 sq. m (694.3 sq. ft)  
Balcony : 63.7 sq. m (685.7 sq. ft)