



Lemna Road, E11

£340,000

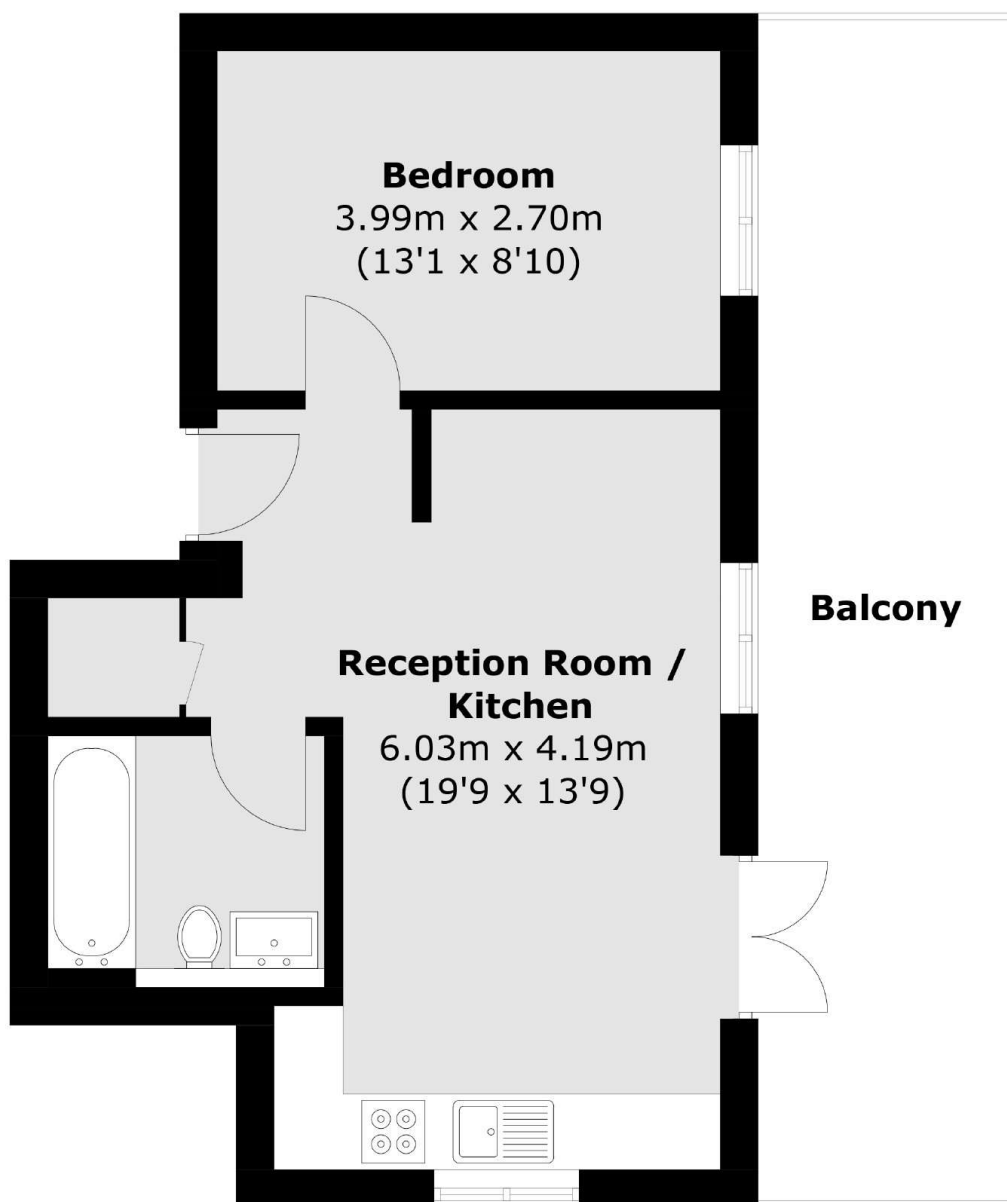
Introducing The Penthouse Collection at Robart House. This one-bedroom apartment boasts a large open-plan living room with direct access onto the southwest-facing terrace, benefiting from stunning panoramic views of the London skyline. The specification includes engineered oak flooring, Bosch appliances in the kitchen, and marble tiling in the bathroom.

Just a short walk from the Underground Station, Leytonstone offers great connectivity with the Central line. Oxford Circus, Bank, and Liverpool Street are easily accessible. Well-serviced bus routes also connect the surrounding areas. Leytonstone High street offers eclectic mix of cafes, restaurants, and boutiques as well as nearby parks and green spaces.

Features

- One Bedroom
- South West Facing Terrace
- Panoramic City Views
- 10 Year Warranty
- 15 Minutes To Liverpool Street

**Lemna Road,
London, E11**



First Floor

Total area (approx.): 39.5 sq. m (425.2 sq. ft)
Balcony area : 19.3 sq. m (207.7 sq. ft)