



## Dyer's Buildings, EC1N

£1,495,000

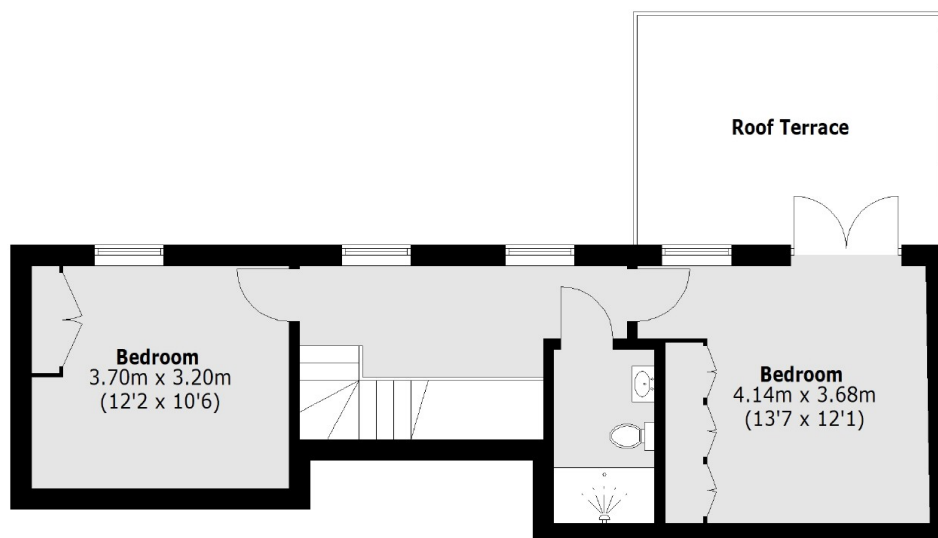
Pink Mews combines Victorian architecture and elegant contemporary interiors. This stunning top floor duplex apartment spans over 1300 Sqft with private outside roof terrace. The open plan reception room enjoys engineered oak flooring with underfloor heating, fully equipped kitchen with Miele appliances and natural stone worktops. The impressive staircase leads up to two double bedrooms, both with built in wardrobes and a separate bathroom. The development is situated beyond private gates with daytime concierge.

Pink Mews is located close excellent transport, amenities and London's best universities. Located just 200m from Chancery Lane underground and nearby the newly opened Elizabeth Line within Farringdon Station. Pink Mews is conveniently positioned for commuters into Liverpool Street, Bond Street and Heathrow Airport.

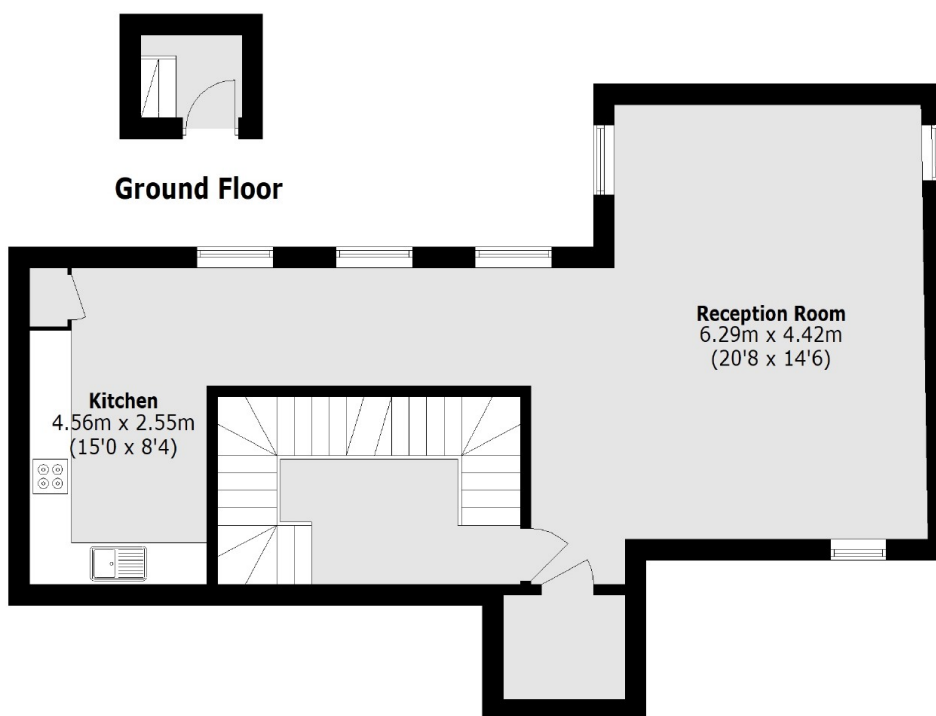
### Features

- Private Gated Mews
- Two Bedrooms
- Private Roof Terrace
- Impressive Specification
- Daytime Concierge
- Builders Warranty

# Dyer's Buildings, London, EC1N



**Second Floor**



**Ground Floor**

**First Floor**

Total area (approx.): 112.4 sq. m (1,209.9 sq. ft)  
Roof Terrace: 14.4 sq. m (155.0 sq. ft)