



Rodmill Lane, SW2

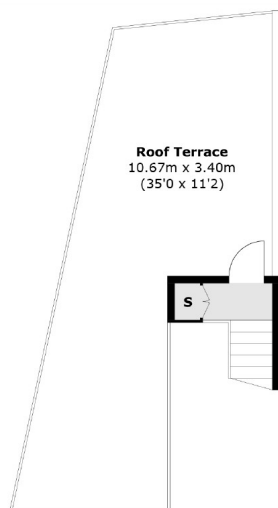
A collection of two bedroom new build home with spacious roof terrace set within a small new courtyard development tucked away behind Brixton Hill.

Rodmill Lane provides easy access to Brixton Underground (Victoria Line) & Streatham Hill Station, frequent buses can be found close by on Brixton Hill with direct routes into central Brixton within minutes and central London in half an hour

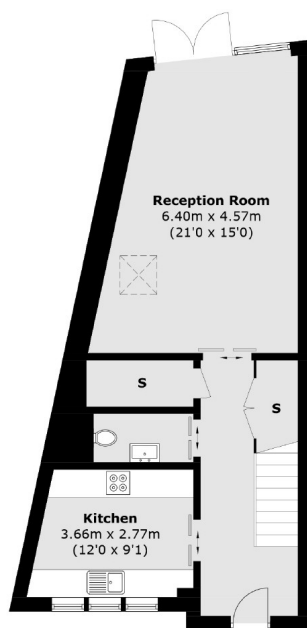
Features

1053 sq ft
Spacious Reception
Two Double Bedrooms
Large Roof Terrace
Potential for 3rd Bedroom (STP)
No Chain

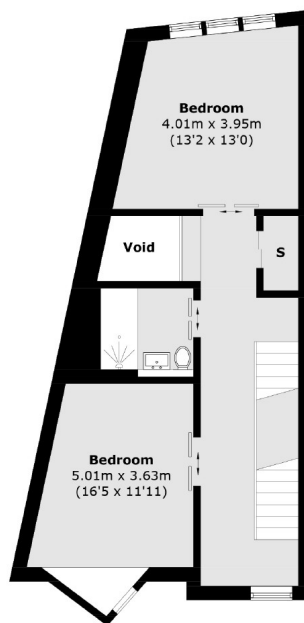
Rodmill Lane, London, SW2



Second Floor



Ground Floor



First Floor

Total area (approx.): 103.6 sq. m (1,115.0 sq. ft)
(Excluding Void)

Roof Terrace area (approx.): 35.6 sq. m (383 sq. ft)

Contact

To arrange a viewing call our office on the number below or via our website.



Energy Rating: . We aim to make our particulars both accurate and reliable. However they are not guaranteed; nor do they form part of an offer or contract. If you require clarification on any points then please contact us, especially if you're traveling some distance to view. Please note that appliances and heating systems have not been tested and therefore no warranties can be given as to their good working order.