



## Claremont Road, W13

### £1,075,000

Beautifully refurbished four bedroom family home on desirable Claremont Road. This impressive four bedroom home offers generous living space, high quality finishes and flexible family accommodation across two floors. The thoughtfully designed open plan kitchen breakfast room with separate reception area is the true heart of the home. This expansive space is perfect for entertaining and family life, featuring a modern kitchen with integrated appliances and generous storage and dining zones with bi fold doors onto the garden. To the front of the home there is a second reception room with a charming bay window, ideal as a formal lounge, TV room or cosy retreat. A convenient downstairs toilet completes the ground floor. Upstairs on the first floor there are three well sized bedrooms along with a modern family bathroom. A first floor study provides an ideal work from home space. On the second floor is a bedroom with a shower room. The interiors throughout are well finished to a high standard and ready to move into.

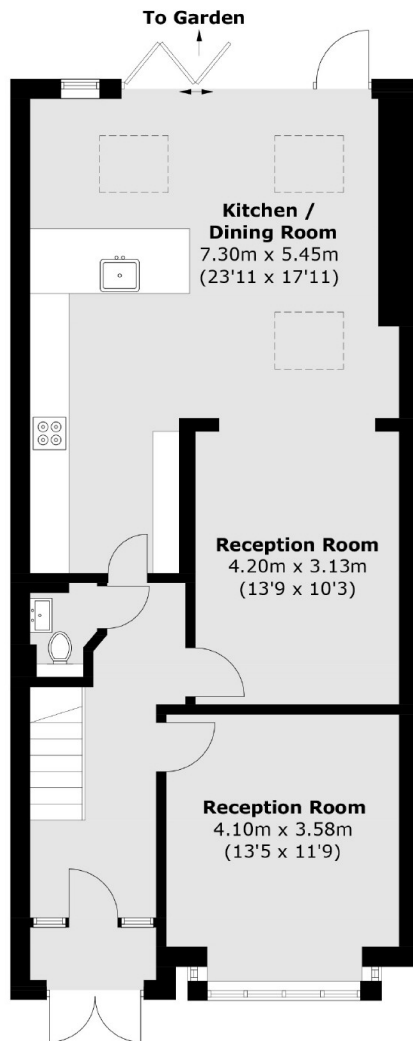
A family home offering space and style set in a peaceful location. Early viewing is recommended.

28 Claremont Road is just a 0.3 mile walk to Castle Bar Park Station which provides a short journey to West Ealing. West Ealing station is alternatively 0.7 miles from the development which is on the Elizabeth line and provides excellent access to Central London,

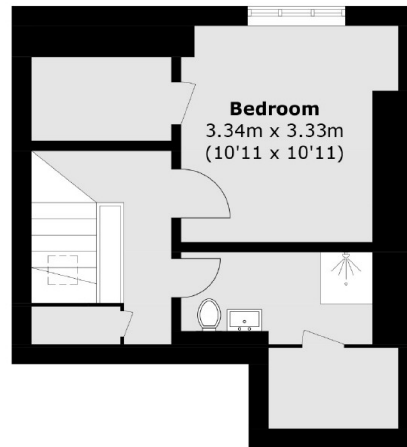
### Features

- 10 Year Build Warranty
- New Build
- Freehold
- Residential Location
- Private Garden
- Close To Train Station

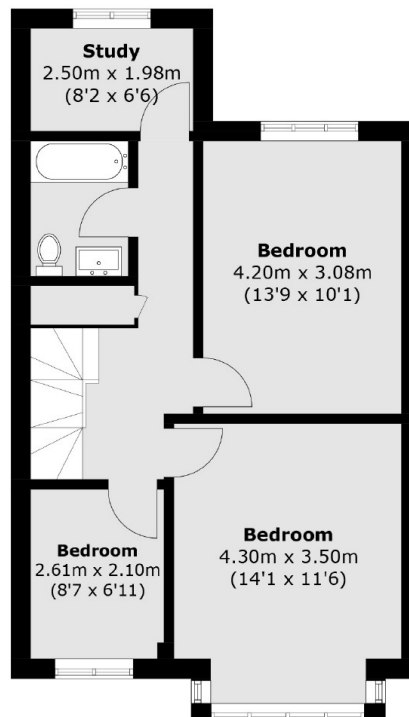
# Claremont Road, London, W13



**Ground Floor**



**Second Floor**



**First Floor**

Total area (approx.): 157.5 sq. m (1,695.4 sq. ft)