



Bedfont Lane, TW14

£695,000

Launching This Saturday! - Call To Book Your Appointment! Beautiful four bedroom semi detached homes in an exclusive private development.

Set within a boutique highly sought after private development of just six homes, this beautifully appointed four bedroom semi detached property offers contemporary living in a unique setting. With private parking and thoughtfully designed interiors throughout, this is a rare opportunity to own a one of a kind home.

On the ground floor the entrance hall leads to a stylish WC and an impressive open-plan kitchen featuring top of the range units and premium integrated appliances perfect for entertaining or family meals. Bi folds doors open directly onto the private rear garden creating a seamless flow between indoor and outdoor living. There is a separate living room with an attractive bay window. On the first floor there are three well proportioned bedrooms, one with high specification shower room. Two further bedrooms with contemporary family bathroom. On the second floor there is a generous bedroom suite with its own bathroom. The majority of the bedrooms benefit from fitted wardrobes.

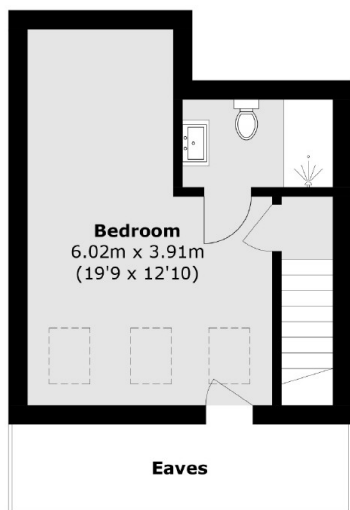
These spacious, luxury homes in a private location have been crafted to high standard with private parking and gardens

Bedfont Lane offers easy access to a range of amenities from the local high street which including bars, restaurants and shops. Feltham station is just 0.8 miles From the development which provides excellent links in to and out of London with access to London Waterloo in just 33 minutes.

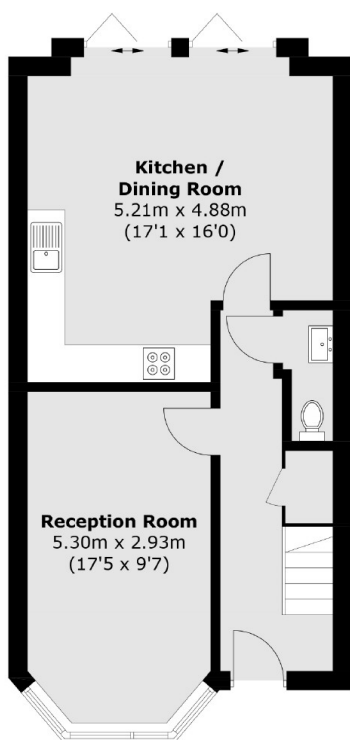
Features

New Build Houses
10 year Build Warranty
Close To Station
High Specification
Parking
Eco Friendly

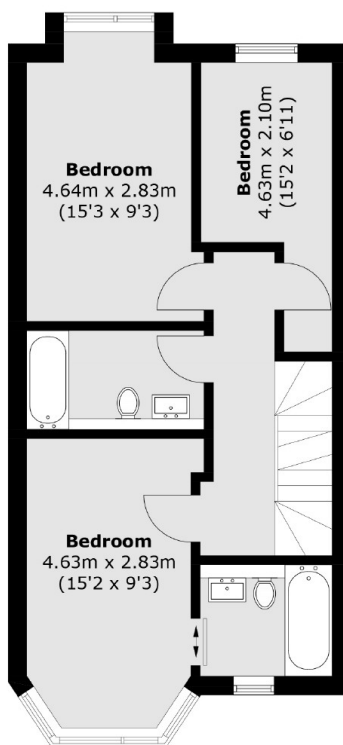
Bedfont Lane, Feltham, TW14



Second Floor



Ground Floor



First Floor

Total area (approx.): 126.8 sq. m (1,364.8 sq. ft)
(Excluding Eaves)