



Waldeck Road, W4

£585,000

A beautifully designed two bedroom mews style home, offering contemporary living over two floors. The open plan ground floor is perfect for modern lifestyles, featuring a contemporary kitchen with stone worktops and Bosch appliances. The living areas are enhanced by elegant herringbone engineered wood flooring, adding warmth and sophistication. A convenient downstairs toilet completes the space.

Upstairs is flooded with natural light with thoughtfully placed skylights creating a bright and airy feel. Two stylish bedrooms and a high specification bathroom all finished to an exceptional standard.

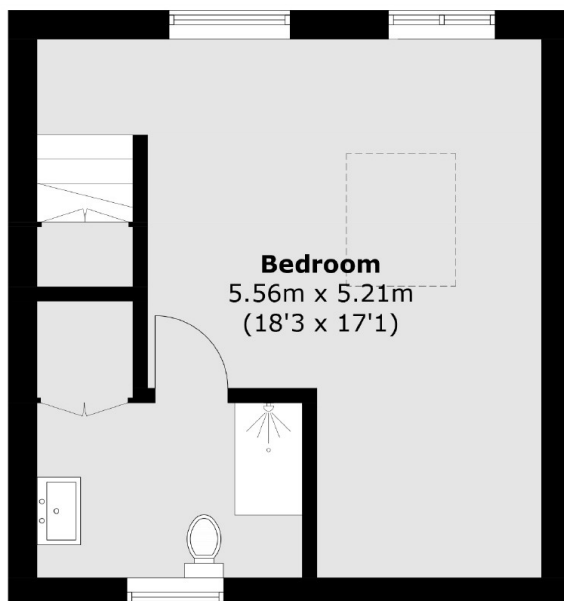
This home benefits from a private garden, a perfect retreat for relaxing or entertaining. This is an exceptional home and blends modern design with practical living in a mews setting. *CGI Images to show the development*

These homes provide a range of options for those looking to reside near the lush landscapes of Kew Gardens and the historic charm of Chiswick House Grounds, all while enjoying modern amenities and excellent connectivity to central London. An added bonus is the development is close to Kew Gardens and the historic charms of Chiswick House Grounds, all well enjoying modern amenities and excellent connectivity to central London.

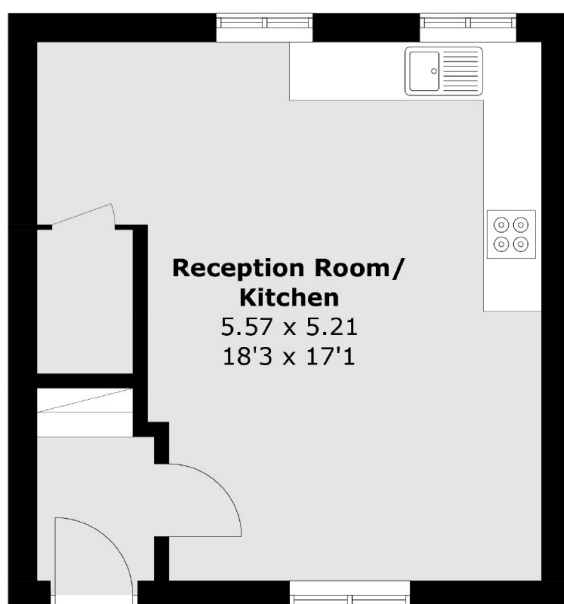
Features

- New Build
- 10 Year Structural Guarantee
- High Specification
- Close To River Thames
- Close To Shops
- Excellent Transport Links

Waldeck Road,
London, W4



First Floor



Ground Floor

Total area (approx.): 58.1 sq. m (625.3 sq. ft)