



## Waldeck Road, W4

### £725,000

Nestled just off Strand on the Green in Chiswick, this beautifully designed one bedroom mews style home offers contemporary living in a sought after setting. The open plan ground floor boasts stunning herringbone engineered wood flooring complementing the sleek kitchen with stone work tops and Bosch appliances.

Upstairs the spacious bedroom features a skylight creating a bright and airy retreat. The bathroom is finished to an exceptional standard offering a perfect blend of style and sophistication.

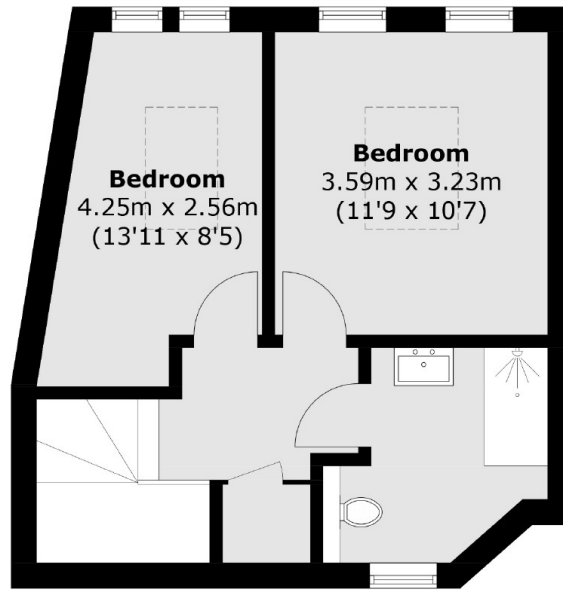
Outside there is a delightful garden providing an outdoor space to unwind. \*CGI Images to show the development\*

These homes provide a range of options for those looking to reside near the lush landscapes of Kew Gardens and the historic charm of Chiswick House Grounds, all while enjoying modern amenities and excellent connectivity to central London. An added bonus is the development is close to Kew Gardens and the historic charms of Chiswick House Grounds, all well enjoying modern amenities and excellent connectivity to central London.

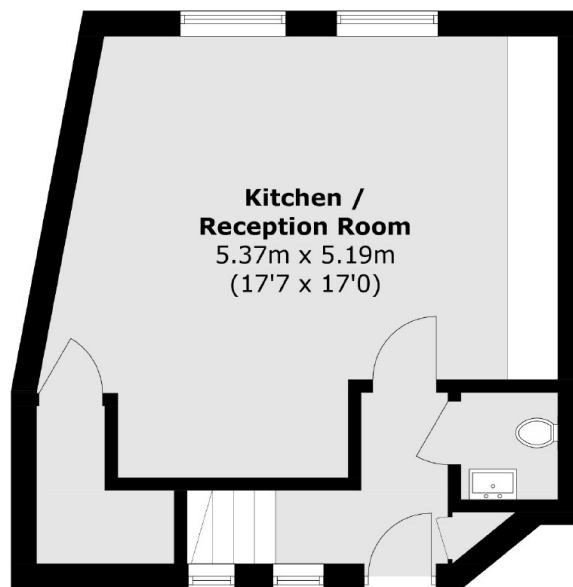
### Features

- New Build
- 10 Year Structural Guarantee
- High Specification
- Close To River Thames
- Close To Shops
- Excellent Transport Links

Waldeck Road,  
London, W4



### First Floor



### Ground Floor

Total area (approx.): 72.5 sq. m (780.4 sq. ft)

**Dexters**

New Homes West London  
20 Claremont Road  
Surbiton  
KT6 4QU

020 8614 1222

Energy Rating: . We aim to make our particulars both accurate and reliable. However they are not guaranteed; nor do they form part of an offer or contract. If you require clarification on any points then please contact us, especially if you're traveling some distance to view. Please note that appliances and heating systems have not been tested and therefore no warranties can be given as to their good working order.

 **RICS** | Regulated  
Estate Agent  
and Letting Agent

[dexters.co.uk](https://www.dexters.co.uk)