



## Coombe Road, KT2

£575,000

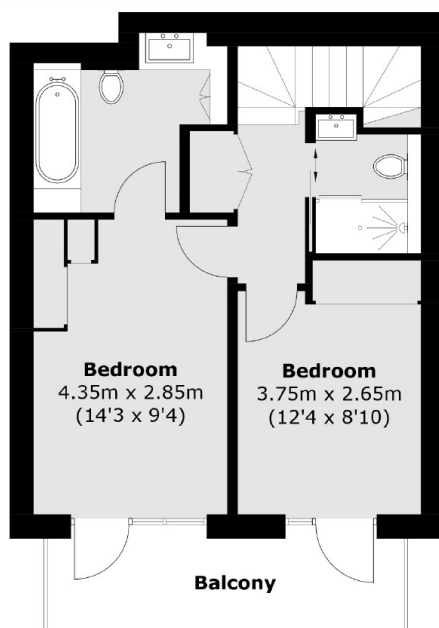
An exclusive development of 2 bedroom duplex homes, finished to a high specification throughout. These stylish apartments have been thoughtfully designed, with beautifully finished, spacious interiors with modern fitted kitchens along with tastefully finished bathrooms. Each home also has the added benefit of private outside space and parking options are available.

Set in the vibrant market town of Kingston Upon Thames, Coombe Road is ideally located in a popular residential area in North Kingston, close to the River Thames, Richmond Park and the fabulous Bentalls Centre. Norbiton Station is a few minutes stroll away and offers connections to London Waterloo in under 30 minutes.

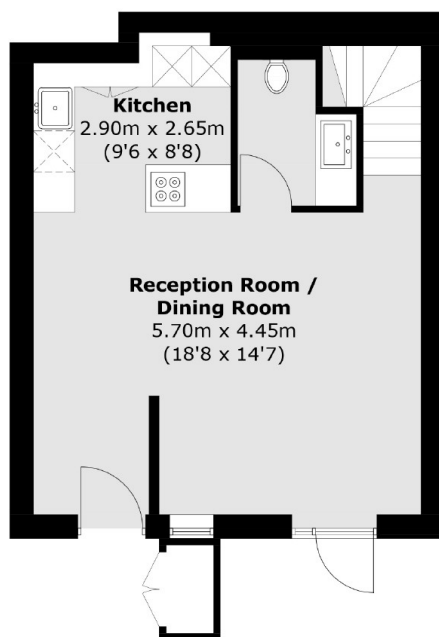
### Features

- Energy Efficient
- Low Maintenance
- Excellent Location
- High Specification
- 10 Year Warranty

# Coombe Road, Kingston Upon Thames, KT2



**First Floor**



**Ground Floor**

Total area (approx.): 78.9 sq. m (849.2 sq. ft)  
(Excluding External Cupboard)  
Balcony: 7.1 sq. m (76.4 sq. ft)