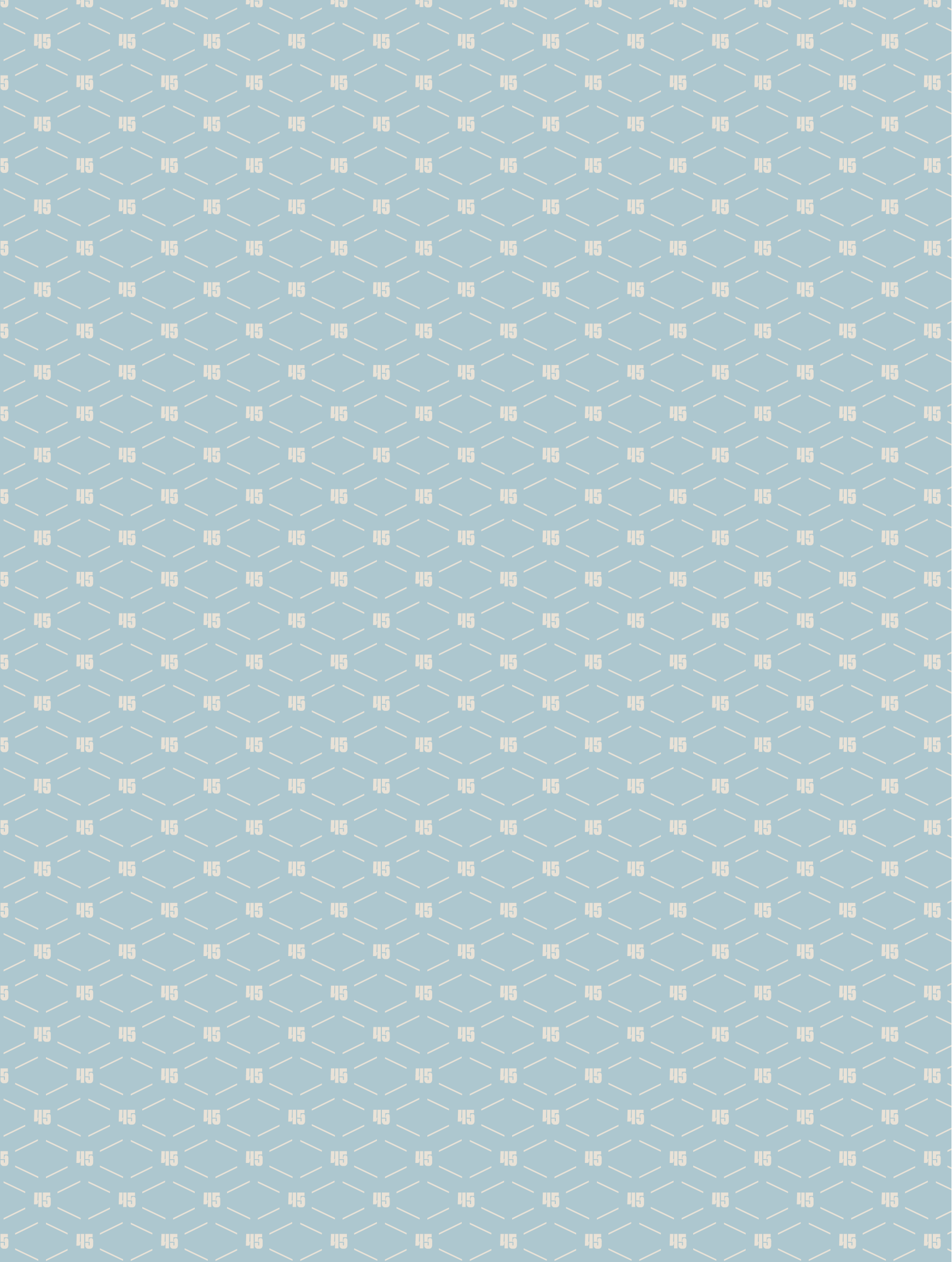


45

**FORTY
FIVE**

THE MALL



EXCLUSIVELY EALING

Located at a discreet address in the heart of Ealing, Forty Five, The Mall, offers boutique living to the discerning few. With just 35 contemporary one and two bedroom apartments, this exclusive development combines peace and privacy with all the amenities of this desirable West London neighbourhood.

Ealing has long been loved for its leafy streets, charming Victorian architecture and high concentration of parks and green spaces. In recent years the area's appeal has been by the opening of new eateries, high-end shopping districts and the arrival of the new Elizabeth Line at Ealing Broadway, making Forty Five, The Mall just three stops from Bond Street in the West End.

Read on to learn more about life as one of just 35.

THE LIMITED EDITION

Forty Five, The Mall is thoughtfully designed to offer modern city living and a sanctuary to return home to each day.

The limited number of apartments means that residents can experience being at home as one of just 35.

Set back from the main thoroughfare of The Mall, which connects Ealing Broadway to Ealing Common, this exclusive development is hidden away in a private and tranquil location.

Inside each apartment, the interior is based on progressive design principles, with modern details and considered finishes to make everyday life run smoothly. The open plan layouts allow for entertaining with ease, and most of the homes have their own private outdoor space.





PAST, PRESENT AND FUTURE



Ealing Studios ↑

Ealing first became a fashionable place to live in the early the 1800s, when the upper classes saw its bucolic surroundings as the perfect antidote to hectic city life. The architect Sir John Soane bought a manor house where he entertained friends and fished with the painter J. M. W. Turner, and Prime Minister Spencer Percival lived in a mansion just off Ealing Common.

With the opening of the Great Western Railway in 1838, middle class commuters followed, and by the 1950s Ealing was known as 'Queen of the Suburbs' thanks to its clean air, green spaces, large family homes and easy journeys into London. This modern and fashionable Victorian town saw the building of new roads, schools, and public buildings. Part of the Walpole estate was turned into public gardens, and horse chestnut trees were planted in Ealing Common.

↓ Ealing Town Hall



The area is perhaps best known for Ealing Studios, which produced the Ealing comedies of the 1940s and 50s, and more recently *Bridget Jones*, *The Theory of Everything* and *The Crown*. The film studio, and later the arrival of the Television Centre at White City, attracted a strong contingent of residents working in film, media, broadcasting and the creative industries.

Today, Ealing continues to be on the up, with the new Elizabeth line and the development of modern homes, leisure and shopping districts further increasing the appeal of this lively, leafy residential community.

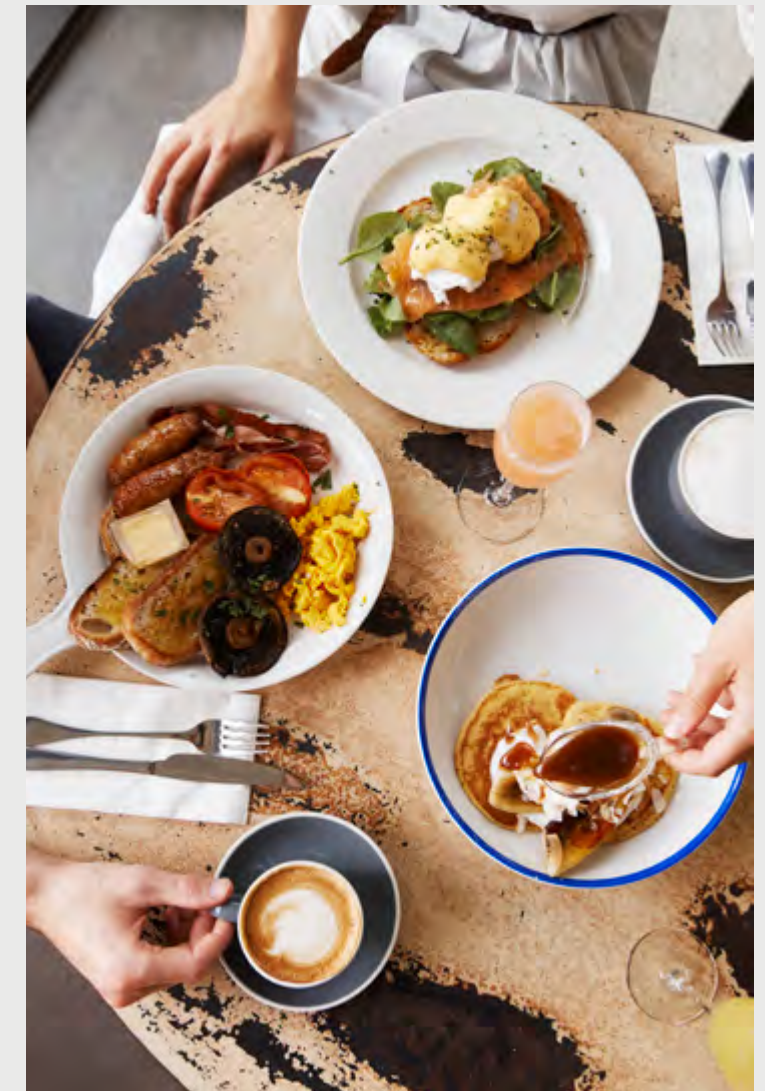
STREET CHIC

No 17 Dickens Yard ↓



Ealing Broadway Centre ↑

↓ No 17 Dickens Yard



Ealing Broadway has the bustling feel of a village with lots of lovely things to see, eat, and do. Independent cafés, shops and restaurants, rub shoulders with breweries, record shops and local markets, all catering to contemporary tastes. And a host of new co-working spaces means its always full of life whether it's the week or the weekend.

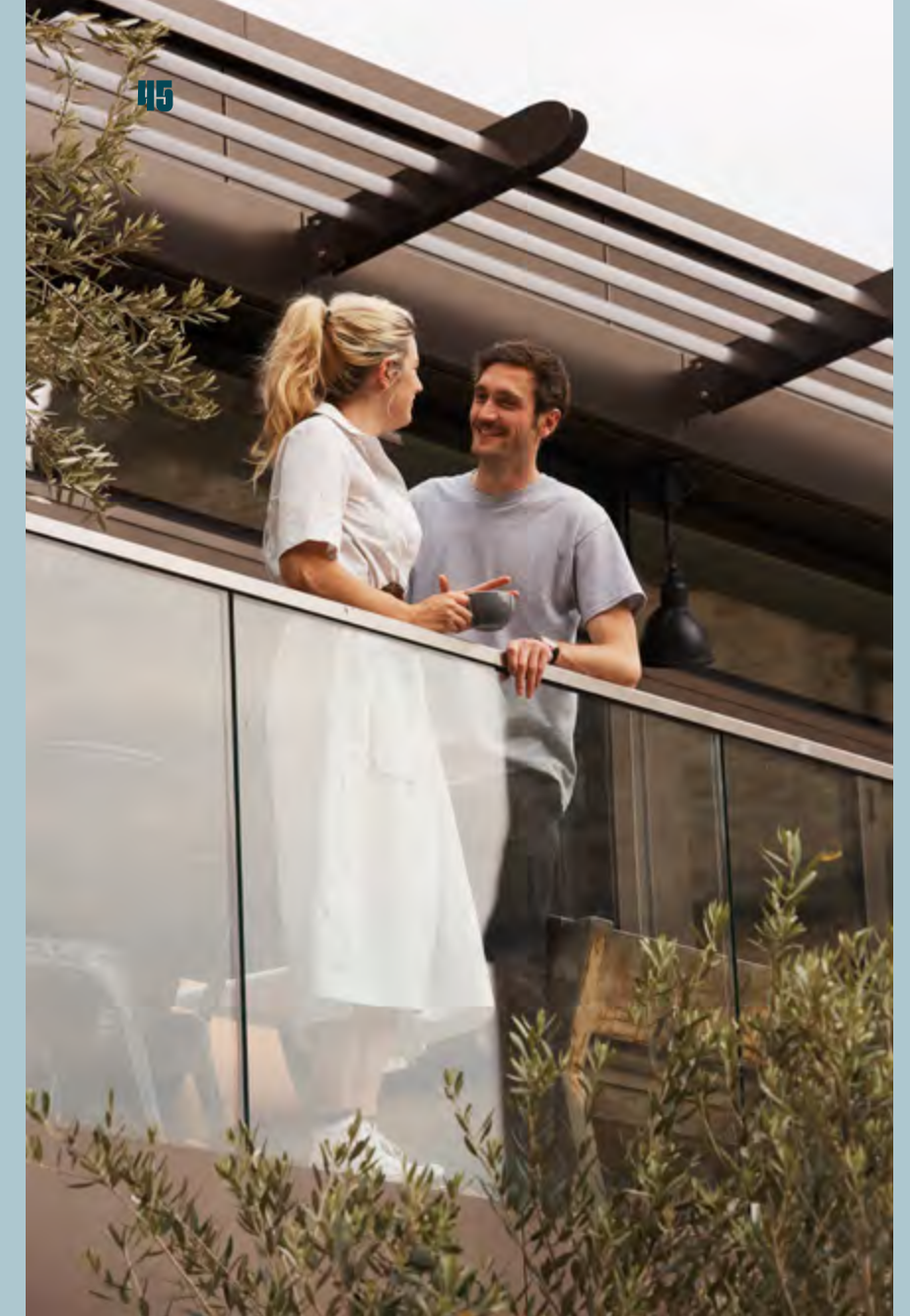
STREET CHIC

There's a rich cultural life, with local galleries and museums, a theatre, community film clubs and venues hosting live music and two new cinemas. The Ealing Project, a multi-screen cinema and venue opened in June 2022, and an eight screen, 1,000 seat Picturehouse cinema is due to open soon at the former Empire Cinema.

Santa Maria Pizzeria ↓



↑ The North Star



↑ No 17 Dickens Yard

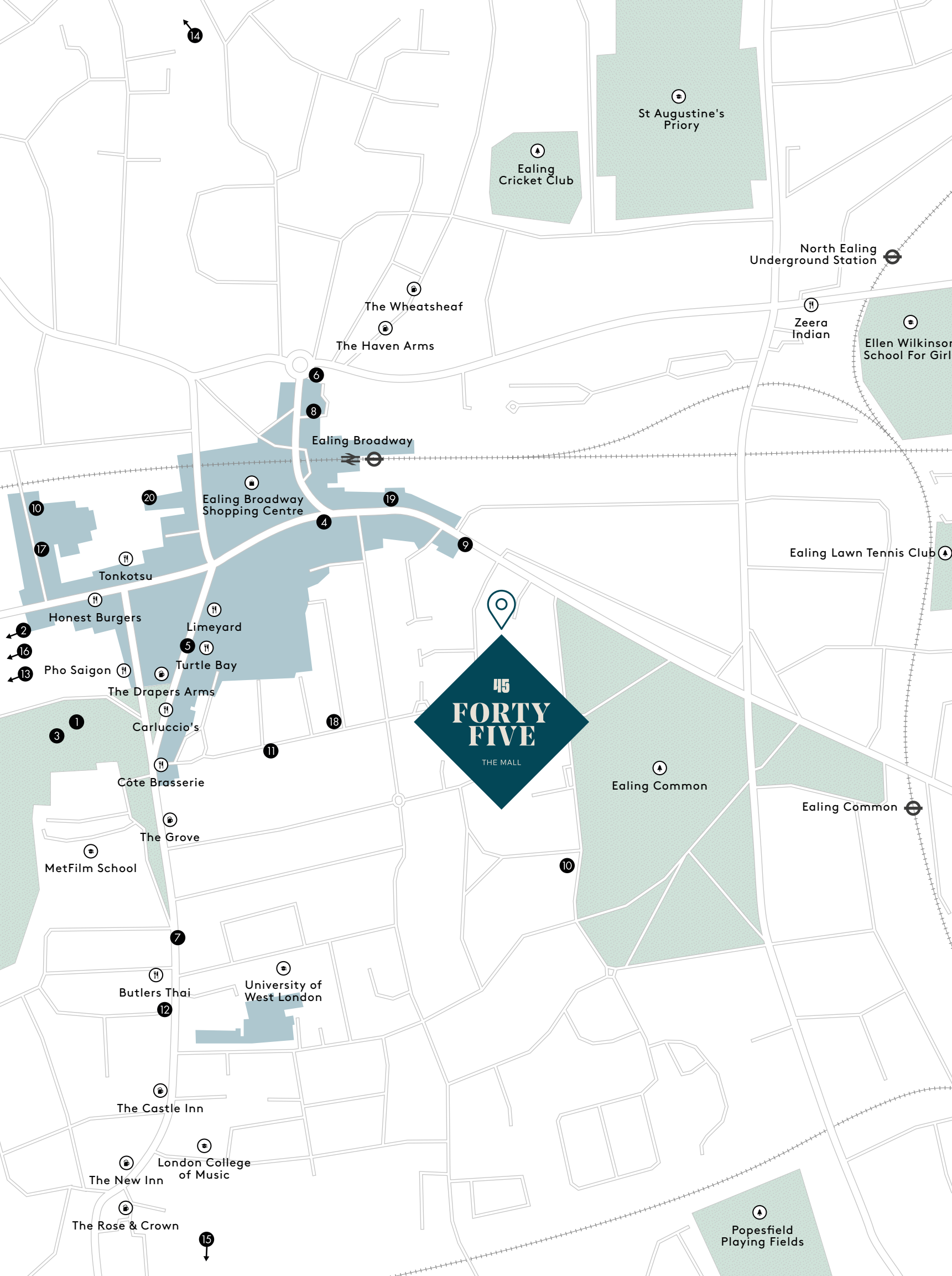
← WA Café



Purveyors of beautiful specialty cakes, pastries and breads, this Japanese patisserie has become a firm favourite. Their matcha croissants make the ultimate breakfast on the go, but you can't beat a takeaway selection all wrapped up in a paper box on Sunday mornings.

WA Café, 32 Haven Green, W5 2NX

LOCAL HIGHLIGHTS

TO SEE

1. Pitzhanger Manor & Gallery
Mattock Lane, W5 5EQ
2. The Questors Theatre
12 Mattock Lane, W5 5BQ
3. Walpole Park
Mattock Lane, W5 5EQ

TO EAT AND DRINK

4. The North Star
43 The Broadway, W5 5JN
5. Bread Street Kitchen & Bar
8 High St, W5 5DB
6. WA Café
32 Haven Green, W5 2NX
7. Santa Maria
15 St Mary's Road, W5 5RA
8. Electric Coffee Co
Electric Coffee Co, 40 Haven Green, W5 2NX
9. Coda di Volpe Pizzeria
44 The Mall, Ealing, W5 3TJ
10. The Grange
Warwick Rd, Ealing, W5 3XH
11. The Kings Arms
55 The Grove, Ealing, W5 5DX
12. The Red Lion
13 St Mary's Rd, Greater, Ealing, W5 5RA

TO SHOP

13. Ealing Farmers Market
Leeland Road, W13 9HH
14. Harrison's Deli
60 Pitshanger Lane, W5 1QY
15. Sounds Original
169 South Ealing Road, W5 4QP

TO MOVE

16. Eden Fitness
Cavalier House, 46-50 Uxbridge Road, W5 2ST
17. triyoga Ealing
Unit 30, Dickens Yard, Longfield Avenue, W5 2UQ
18. Good Times Yoga
The Grove, Ealing W5 5LL
19. Digma Fitness
17 The Mall, Ealing, W5 2PJ
20. Gymbox Ealing
UNIT 15 Dickens Yard, Longfield Ave, W5 2TD

LOCAL HIGHLIGHTS



↑ Sounds Original

Owner Paul Green has been running this record shop since 1983, Specialising in high quality vinyl and memorabilia from the 1950s, 60s and 70s, it's almost impossible to walk on by.

169 South Ealing Road, W5 4QP



→ Electric Coffee Co

Ardent coffee lovers might say this speciality coffee shop is Ealing's best. As well as sourcing and roasting its own coffee, Electric serves fresh sandwiches, cakes, pastel de natas and sells wine, coffee and accessories and coffee beans as part of a month subscription.

Electric Coffee Co, 40 Haven Green, W5 2NX



← Bread Street Kitchen & Bar

Bread Street Kitchen & Bar showcases the very best of Gordon Ramsay's signature dishes; from his world-famous Beef Wellington experience, to Himalayan salt dry-aged Rare Breed beef from the wood-fired Josper grill.

8 High St, W5 5DB



STREET CHIC



↑ The North Star

This former Victorian beer shop is one of Ealing's favourite watering holes, with an excellent selection of beers, spirits and cocktails and a lively outdoor area. Locals love this community pub for its laid-back dining and live music.

The North Star, 43 The Broadway, W5 5JN

→ Santa Maria

This charming pizzeria, run by Pasquale Chionchio and Angelo Ambrosio was making Neapolitan pizza before it was cool, and has helped to fuel London's obsession with sourdough crusts ever since. In 2010 Time Out named it London's best pizzeria.

Santa Maria, 15 St Mary's Road, W5 5RA



← Harrison's Deli

This independent deli and wine shop is the go-to spot for cheese, charcuterie, luxurious continental cupboard staples and French and Swiss wines (owner Belinda used to work in the wine trade). It also has a small bar.

Harrison's Deli, 60 Pitshanger Lane, W5 1QY



STREET CHIC



↑ No 17 Dickens Yard

No. 17 Dickens Yard is an independent neighbourhood bar and restaurant, with a contemporary vibe that provides the perfect backdrop for indoor and outdoor drinking and dining.

Unit 17 Dickens Yard, Longfield Ave, W5 2TD



↑ Gym Box

For workouts with a difference, there's Gymbox's new spot in Dickens Yard. Facilities include a sprint track, weights, dance studios, a cycle studio and a boxing ring. The resident DJs sum up the spirit of Gymbox: it's all about having fun while you sweat.

Unit 15 Dickens Yard, Longfield Avenue, W5 2TD

↓ The Red Lion



UNLIMITED OPPORTUNITY LEISURE, EDUCATION, GREEN SPACES

Walpole Park ↓



Residents agree that the wealth of green space in Ealing is one of its main attractions. Ealing Common and the beautiful Walpole Park are right on the doorstep of the development, while Lammas Park, Gunnersbury Park and Pitshanger Park are all within easy walking distance and Kew Gardens is a mere 15 minute cycle.



↑ ↓ Kew Gardens

For weekend leisure, there are numerous golf clubs nearby, while Brent Valley Park and Boston Manor Park both have nature trails, conservation areas and tranquil river routes that feel a world away from the bustle of London. The neoclassical home and gardens at The National Trust's Osterley Park and House are perfect for long picturesque walks.

The London Borough of Ealing also has many excellent nurseries, primary and secondary state and independent schools rated as 'outstanding' or 'good' by Ofsted.





←↑ **Walpole Park**

As local parks go it doesn't get much better than this. With 28 acres of beautifully landscaped grounds, Walpole Park features the Victorian Serpentine Lake, green lawns, and an innovative children's play area. In the summer it plays host to opera in the park and jazz, comedy, and beer festivals.

Walpole Park, Mattock Lane,
W5 5EQ

LONDON'S MOST ECO-FRIENDLY BOROUGH

Homes & Property Evening Standard

UNLIMITED OPPORTUNITY LEISURE, EDUCATION, GREEN SPACES



Ealing Common
2min walk



Brent Valley Park
14min cycle



Walpole Park
8min walk



Kew Gardens
15min cycle



Lammas Park
18min walk



Hyde Park
28min cycle



Gunnersbury Park
20min walk



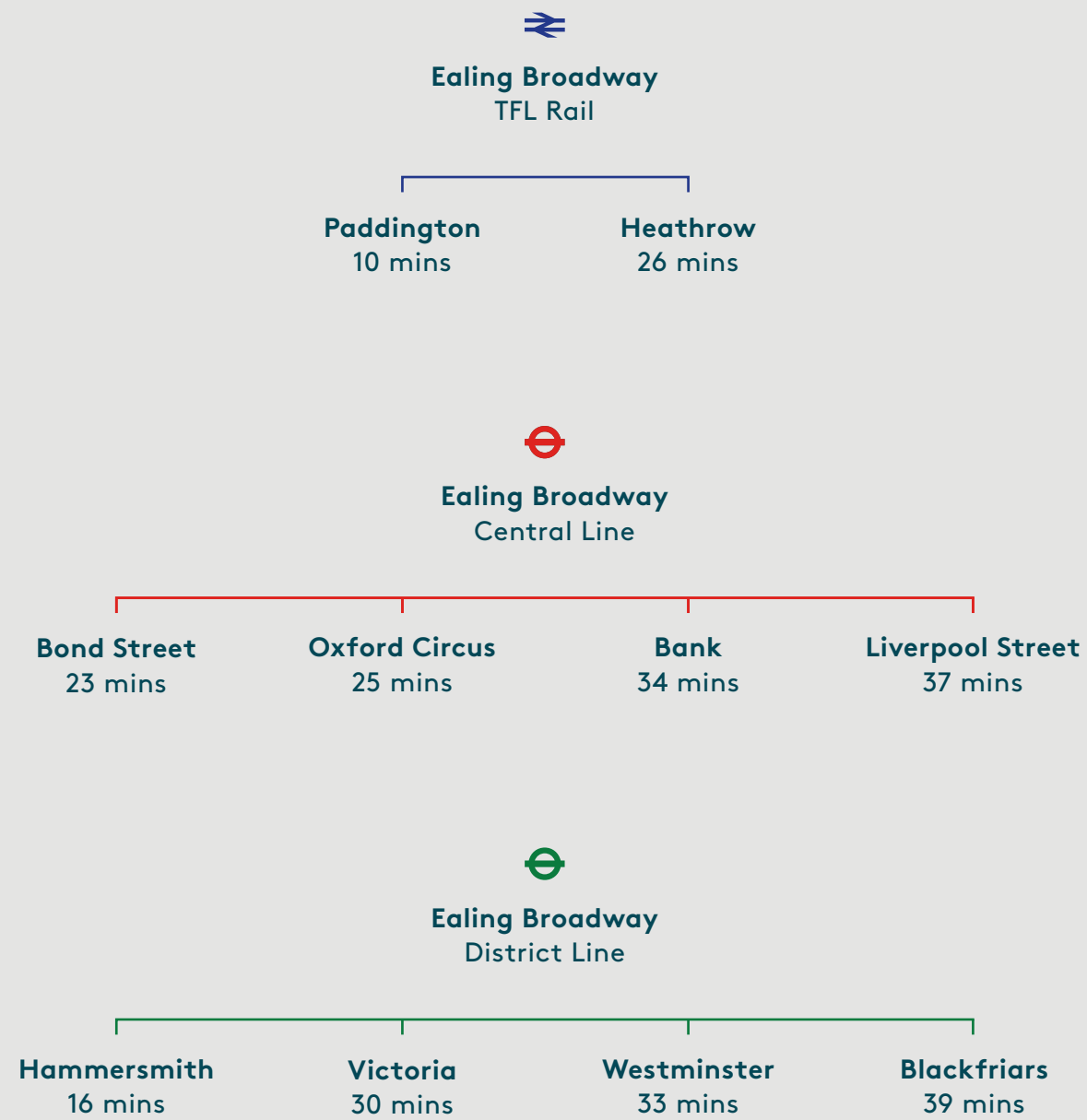
The Regent's Park
42min cycle

Travel times are are approximate. Source www.fl.gov.uk



UNLIMITED OPPORTUNITY TRANSPORT, CENTRAL AND BEYOND

UNDERGROUND & TFL*



*Travel times are approximate. Source www.fl.gov.uk

UNDERGROUND*



Ealing is a quick hop, skip and jump from central London and is served by Ealing Broadway station, just a five minute-walk from Forty Five, The Mall. The station is on the Central, District, and new Elizabeth line which has radically shortened journey times.

Design fans often stop by platforms 8 and 9 at Ealing Broadway station to see one of the city's early London Underground signs, which shows a red blocked-out version of the famous roundel logo. It's a relic from a bygone era that always brightens up the commute.

Nearby North Ealing and Ealing Common stations are a ten minute-walk away, connecting the area to the Piccadilly line on the London Underground. The neighbourhood is also served by 18 buses, including night buses.

*Travel times are approximate. Source www.fl.gov.uk

DESIGNED FOR MODERN LIVING

Each apartment at Forty Five, The Mall is guided by high-end, forward-thinking design principles and ideally suited to contemporary lifestyles. These thoroughly modern homes have been designed to make life easy, offsetting the many tensions of city living.

All shared areas, from the entrance hallway to your front door, are designed for maximum flow, with a relaxing atmosphere created by timber and greenery, and open views. These considered architectural touches help to create a welcome boundary between home, work, and play, and set Forty Five, The Mall apart from other modern schemes in the neighbourhood. Your apartment is a haven where you can switch off at the end of a long day, a comfortable distance way from the sounds of late-night London's restaurants and bars.

We all have less free time than we'd like, so it's important that our homes are stress-free zones. The meticulous approach to interior design at Forty Five, The Mall is evident in the luxurious finishes and attention to detail that create a calm and relaxed ambience that makes all the difference.













SPECIFICATION

Conceirge entrance hall and staircase

- Reception and waiting area
- Lift to all floors
- Individual post boxes for residents
- Secure cycle spaces for residents
- Audio entry phone system to the main entrance door
- Heavy duty floor to entrance hallway and carpet tile to stairs and landings (where applicable)
- Communal staircase with painted balustrade and handrail (where applicable)

General

- Underfloor heating throughout
- Painted plasterboard ceilings and walls
- Painted timber skirting's and architraves
- Painted timber doors with matt black ironmongery
- Lighting: recessed spotlights throughout
- Audio / video entry phone
- TV / data outlets in all bedrooms and open plan living
- Smoke alarms in main living spaces
- Heating and hot water supplied via apartment boiler

External areas

- Paved balconies / terraces
- Buff brick to external walls
- Landscaped communal garden

Kitchen / dining / living

- Engineered timber floor
- Bespoke fitted kitchen with quartz stone countertop and integrated concealed linear LED lighting
- Finger pull to high level units. Slimline matt black pull handle to low level units
- Porcelain gloss tile in chevron format splashback
- Integrated appliances (Bosch oven and hob; Hoover F/F and D/W or similar)
- Franke under mount sink and brassware (or similar)
- Recirculation filter hood above hob
- Mechanical ventilation via heat recovery unit

Hallway

- Engineered timber floor
- Utility/storage cupboard

Master bedroom

- Luxury fitted carpet
- Bespoke fitted wardrobes with timber effect laminate to internal carcass and matt lacquered door fronts with soft close hinges, hanging rail, shelving with matt black knobs

Master bathroom

- Porcelain tiles to floor and walls of wet areas (paint elsewhere)
- Feature niche
- Matt black brassware
- Bath / shower tray (where applicable)
- Glass shower / bath screen with matt black hinge detail
- Wall hung WC with concealed cistern, soft close seat with matt black dual flush plate
- Wall hung vanity and basin
- Shaver socket
- Mirror with integrated LED light or feature decorative wall light fitting configuration if ensuite
- Heated towel rail
- Underfloor heating
- Mechanical extract to atmosphere

Bedroom 2

- Luxury fitted carpet

Family bathroom

- Porcelain tiles to floor and walls of wet areas (paint elsewhere)
- Feature niche
- Matt black brassware
- Bath with glass bath screen and matt black hinge detail
- Wall hung WC with concealed cistern, soft close seat with matt black dual flush plate
- Wall hung vanity and basin
- Shaver socket
- Mirror with integrated LED light
- Heated towel rail
- Underfloor heating
- Mechanical extract to atmosphere

SPECIFICATION PALETTE

08

07

09

14

01

05

12

11

02

03

04

10

15

13

06

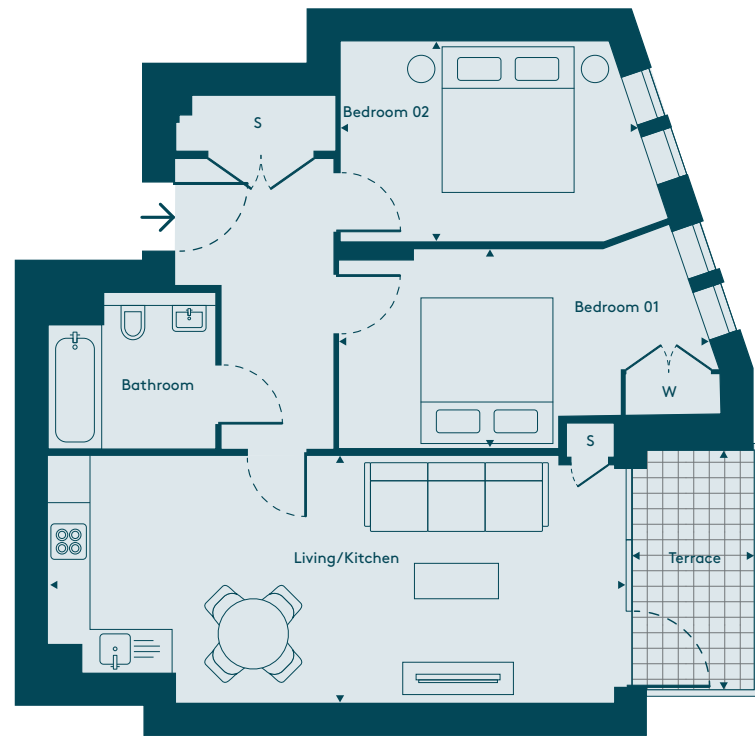
07

Key

- 01. Bedroom carpet
- 02. Architrave - painted
- 03. Skirting - painted
- 04. Engineered timber floor plank
- 05. Bathroom porcelain floor tile
- 06. Bedroom joinery internals
- 07. Bathroom matt black fittings
- 08. Main Apartment door
- 09. Ironmongery - matt black
- 10. Shower Head
- 11. Slimline kitchen handle
- 12. Kitchen joinery finish
- 13. Bathroom Tap - matt black
- 14. Kitchen quartz countertop
- 15. Kitchen backsplash chevron tile

APARTMENT 1

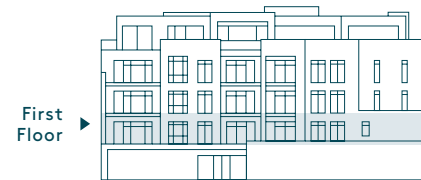
Two Bedroom



ES: En Suite
W: Wardrobe
S: Storage

Living/Kitchen	7.81m x 3.42m	(25'7" x 11'3")
Bedroom 01	5.27m x 2.76m	(17'3" x 9'1")
Bedroom 02	4.39m x 2.93m	(14'5" x 9'7")
Terrace 01	3.31m x 1.68m	(10'10" x 5'6")

GIA Total 66.68m² 717.7ft²



APARTMENT 2

Two Bedroom



ES: En Suite
W: Wardrobe
S: Storage

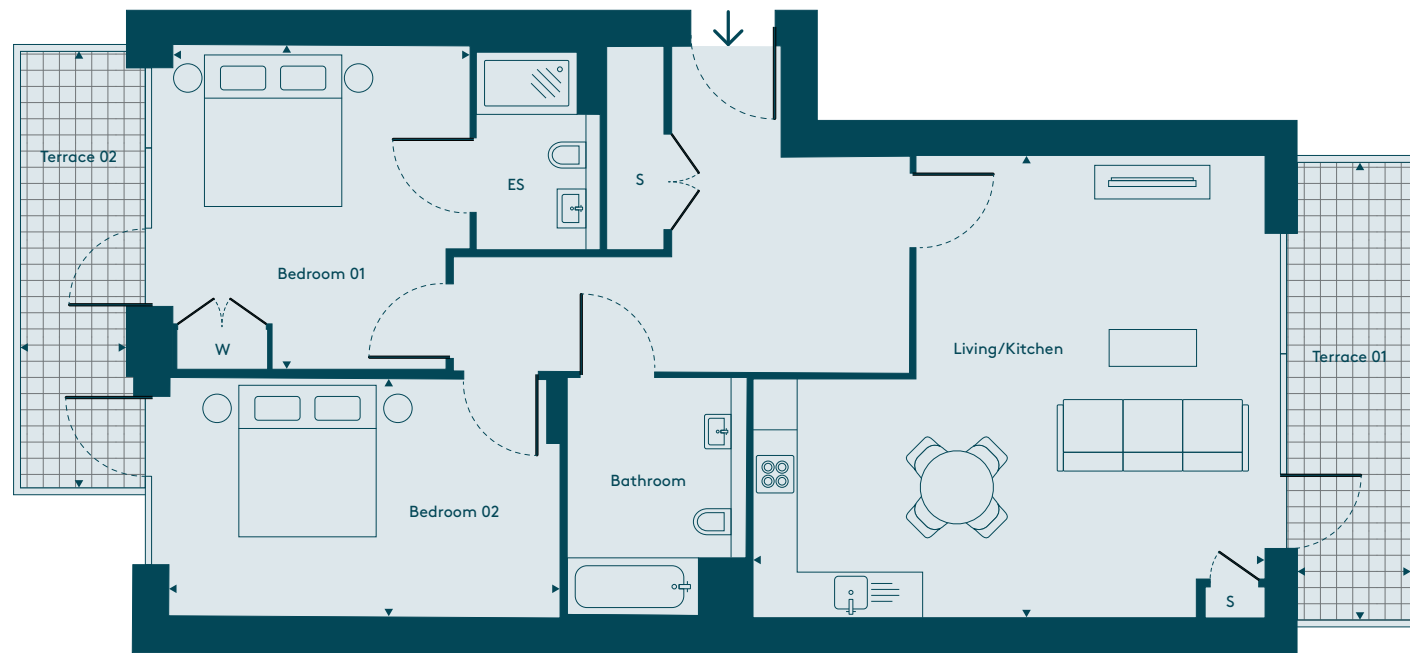
Living/Kitchen	6.01m x 4.66m	(19'9" x 15'3")
Bedroom 01	5.26m x 2.74m	(17'3" x 9'0")
Bedroom 02	4.06m x 2.85m	(13'4" x 9'4")
Terrace 01	4.38m x 1.50m	(14'4" x 4'11")

GIA Total 71.20m² 766.4ft²



APARTMENT 3

Two Bedroom

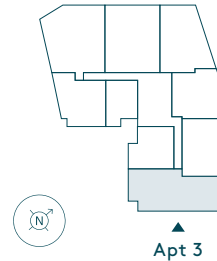


ES: En Suite
W: Wardrobe
S: Storage

Living/Kitchen	6.68m x 6.03m	(21'11" x 19'9")
Bedroom 01	4.25m x 3.89m	(13'11" x 12'9")
Bedroom 02	5.10m x 3.11m	(16'9" x 10'2")
Terrace 01	5.98m x 1.48m	(19'7" x 4'10")
Terrace 02	5.67m x 1.52m	(18'7" x 5'0")

GIA Total 97.02m² 1,044.3ft²

First Floor



APARTMENT 4

One Bedroom

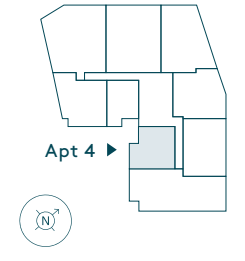


ES: En Suite
W: Wardrobe
S: Storage

Living/Kitchen	6.49m x 4.42m	(21'4" x 14'6")
Bedroom 01	4.14m x 3.14m	(13'7" x 10'4")
Terrace 01	5.01m x 1.40m	(16'5" x 4'7")

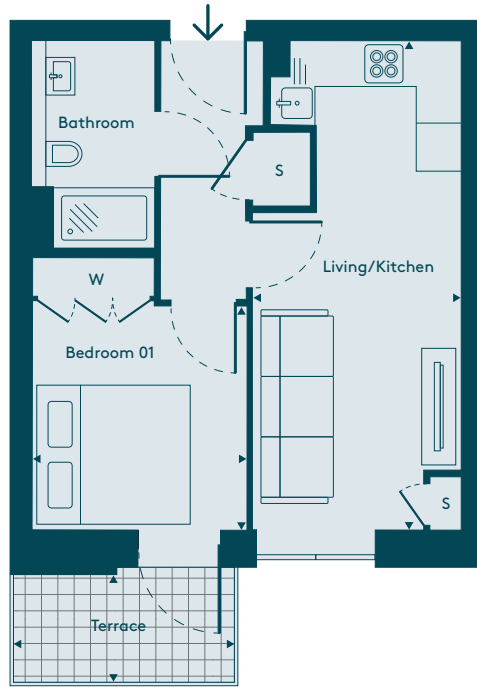
GIA Total 49.46m² 532.4ft²

First Floor



APARTMENT 5

One Bedroom



ES: En Suite
W: Wardrobe
S: Storage

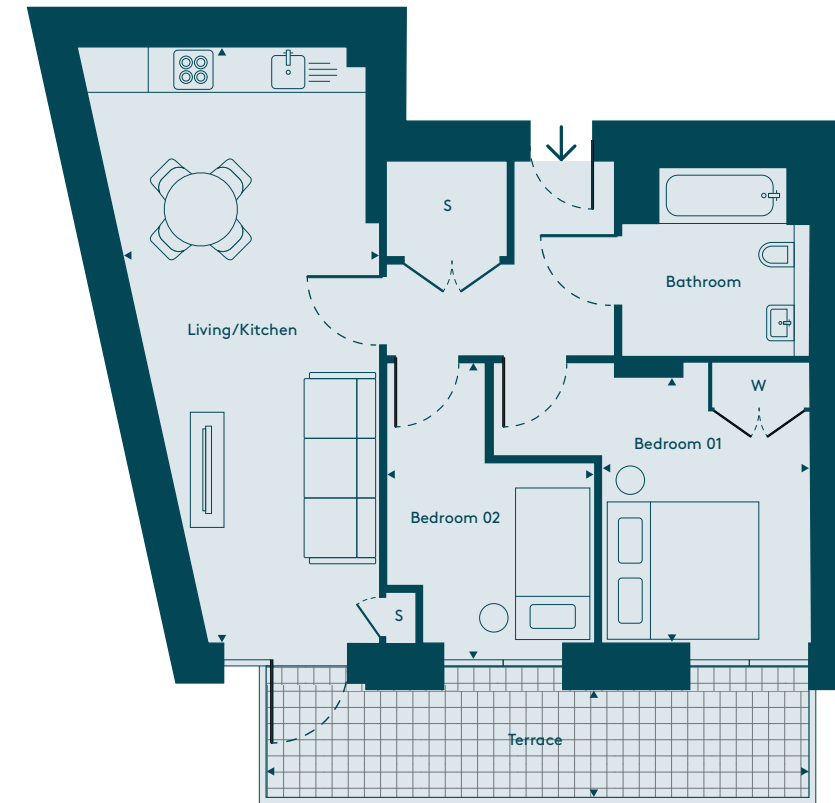
Living/Kitchen 6.39m x 2.73m (21'0" x 8'11")
Bedroom 01 3.55m x 2.81m (11'8" x 9'3")
Terrace 01 2.90m x 1.55m (9'6" x 5'1")

GIA Total 35.84m² 385.8ft²



APARTMENT 6

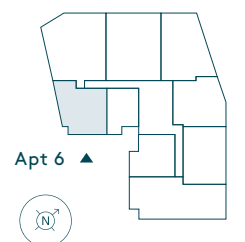
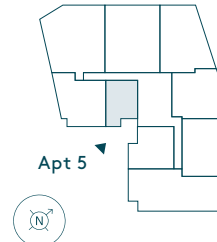
Two Bedroom



ES: En Suite
W: Wardrobe
S: Storage

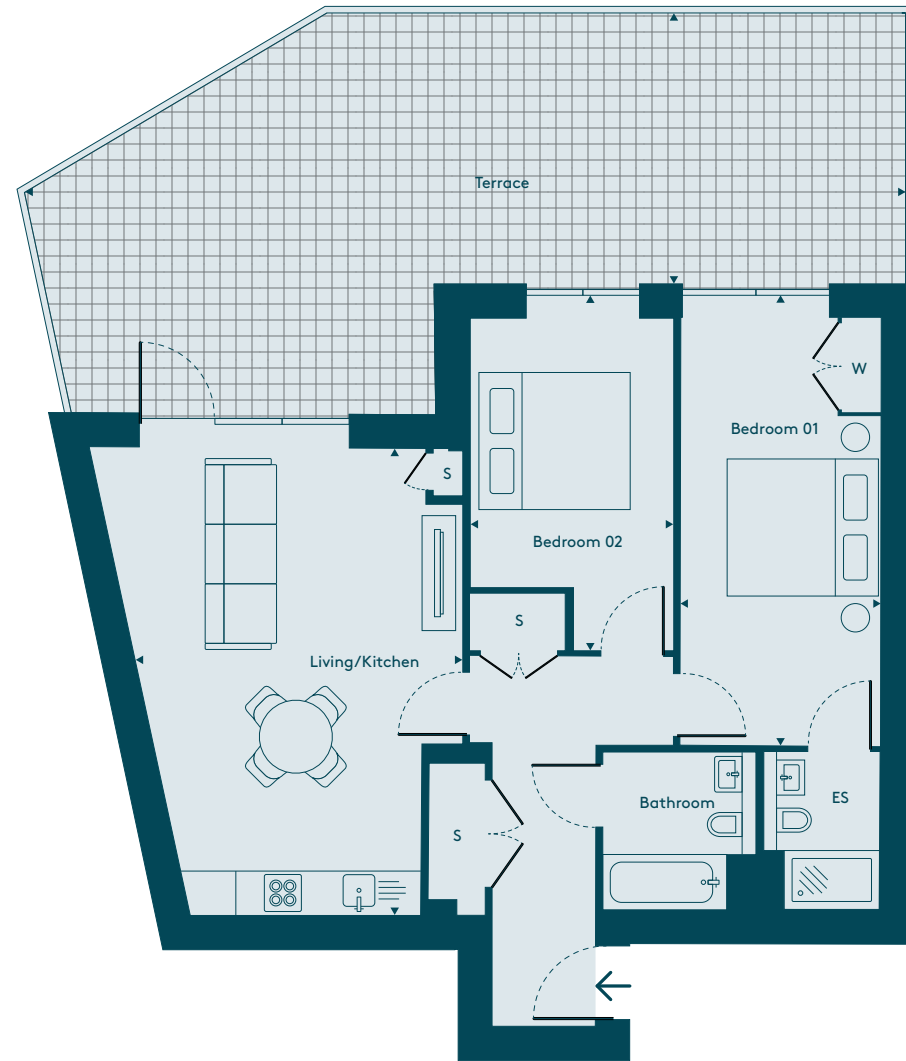
Living/Kitchen 7.89m x 3.82m (25'11" x 12'6")
Bedroom 01 4.20m x 3.72m (13'9" x 12'2")
Bedroom 02 3.72m x 2.77m (12'2" x 9'1")
Terrace 01 7.24m x 1.52m (23'9" x 5'0")

GIA Total 60.56m² 651.9ft²



APARTMENT 7

Two Bedroom



ES: En Suite
W: Wardrobe
S: Storage

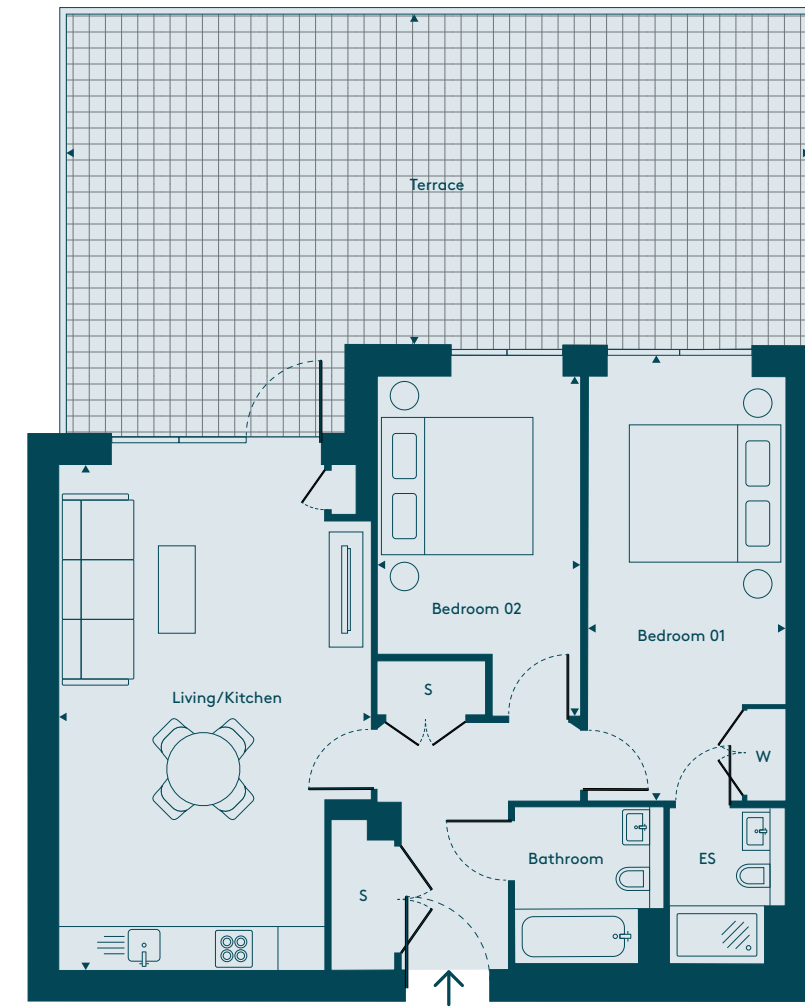
Living/Kitchen	6.39m x 4.93m	(21'0" x 16'2")
Bedroom 01	5.86m x 2.74m	(19'3" x 9'0")
Bedroom 02	4.54m x 2.78m	(14'11" x 9'1")
Terrace 01	12.14m x 8.45m	(39'10" x 27'9")

GIA Total 76.53m² 823.8ft²



APARTMENT 8

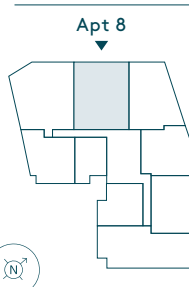
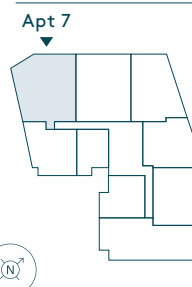
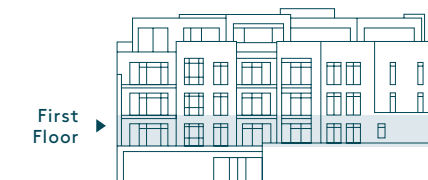
Two Bedroom



ES: En Suite
W: Wardrobe
S: Storage

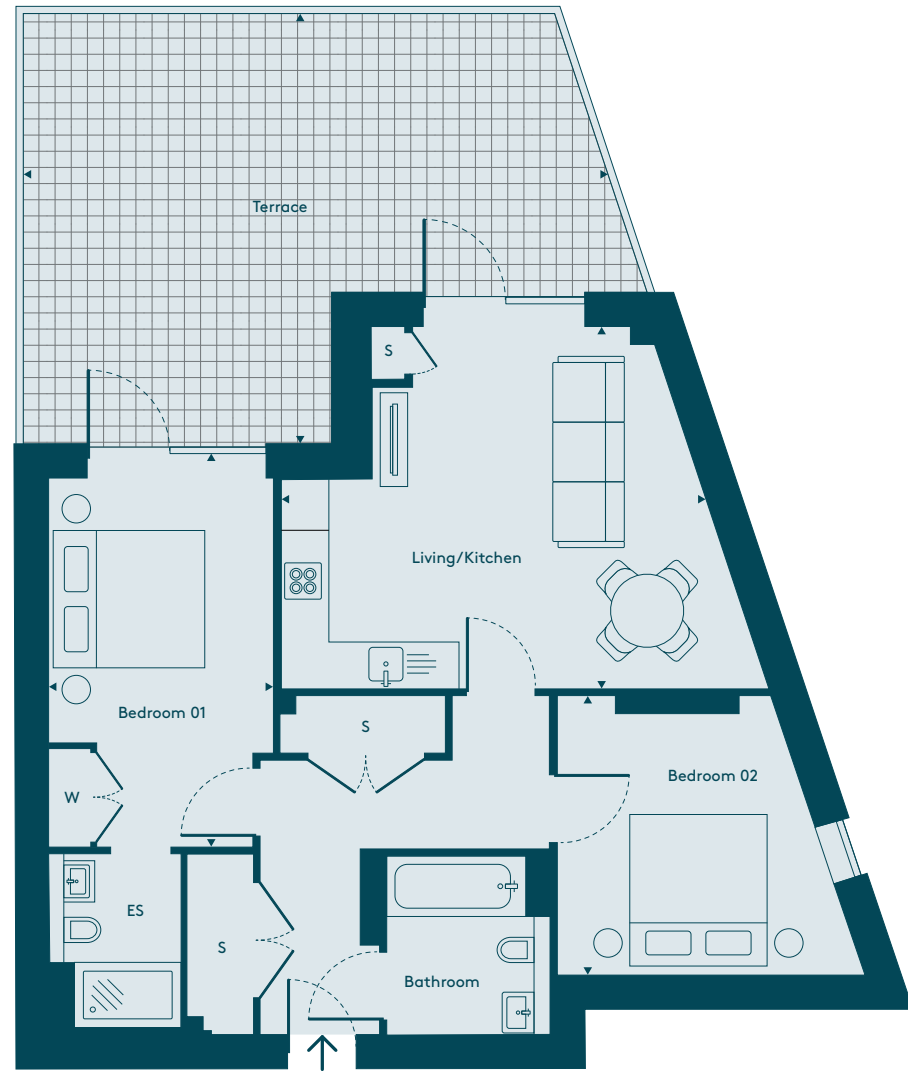
Living/Kitchen	6.97m x 4.31m	(22'10" x 14'2")
Bedroom 01	5.86m x 2.75m	(19'3" x 9'0")
Bedroom 02	4.69m x 2.81m	(15'5" x 9'3")
Terrace 01	9.99m x 5.83m	(32'9" x 19'2")

GIA Total 76.45m² 822.9ft²



APARTMENT 9

Two Bedroom

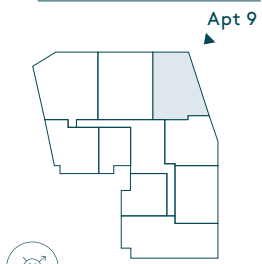


ES: En Suite
W: Wardrobe
S: Storage

Living/Kitchen	6.02m x 4.53m	(19'9" x 14'10")
Bedroom 01	4.62m x 2.78m	(15'2" x 9'1")
Bedroom 02	3.80m x 3.49m	(12'6" x 11'5")
Terrace 01	7.71m x 5.40m	(25'4" x 17'9")

GIA Total 67.72m² 728.9ft²

First Floor



APARTMENT 10

Two Bedroom

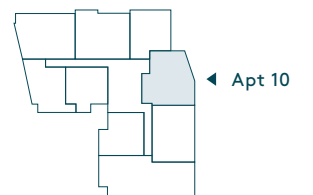
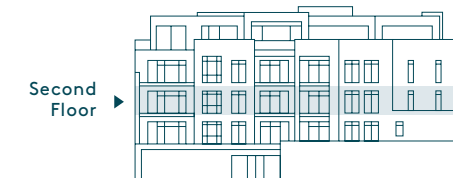


ES: En Suite
W: Wardrobe
S: Storage

Living/Kitchen	7.80m x 3.88m	(25'7" x 12'9")
Bedroom 01	4.86m x 3.17m	(15'11" x 10'5")
Bedroom 02	4.70m x 2.72m	(15'5" x 8'11")
Terrace 01	3.30m x 1.50m	(10'10" x 4'11")

GIA Total 75.30m² 810.5ft²

Second Floor



APARTMENT 11

Two Bedroom

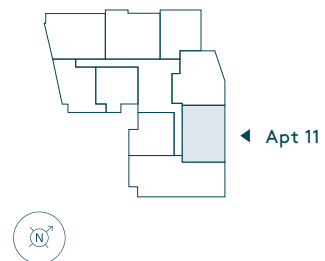


ES: En Suite
W: Wardrobe
S: Storage

Living/Kitchen	5.97m x 4.67m	(19'7" x 15'4")
Bedroom 01	5.27m x 2.73m	(17'3" x 8'11")
Bedroom 02	4.08m x 2.86m	(13'5" x 9'5")
Terrace 01	4.39m x 1.48m	(14'5" x 4'10")

GIA Total 71.09m² 765.2ft²

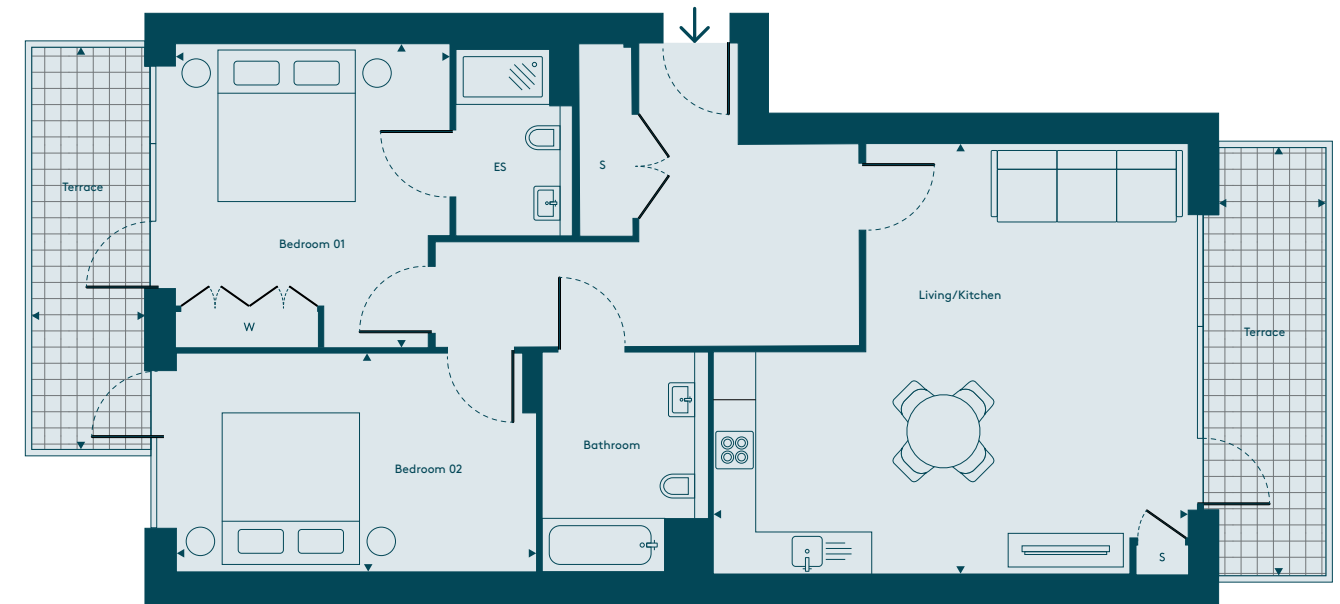
Second Floor



◀ Apt 11

APARTMENT 12

Two Bedroom

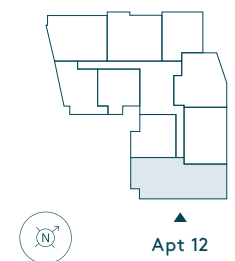
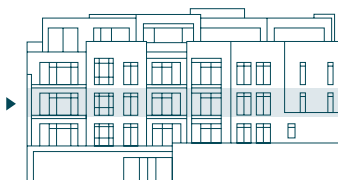


ES: En Suite
W: Wardrobe
S: Storage

Living/Kitchen	6.66m x 6.04m	(21'10" x 19'10")
Bedroom 01	4.27m x 3.85m	(14'0" x 12'8")
Bedroom 02	5.06m x 3.08m	(16'7" x 10'1")
Terrace 01	5.98m x 1.50m	(19'7" x 4'11")
Terrace 02	5.62m x 1.51m	(18'5" x 4'11")

GIA Total 96.62m² 1,040.0ft²

Second Floor



▲ Apt 12

APARTMENT 13

One Bedroom

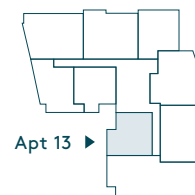


ES: En Suite
W: Wardrobe
S: Storage

Living/Kitchen	6.47m x 4.41m	(21'3" x 14'6")
Bedroom 01	4.13m x 3.15m	(13'7" x 10'4")
Terrace 01	5.00m x 1.40m	(16'5" x 4'7")

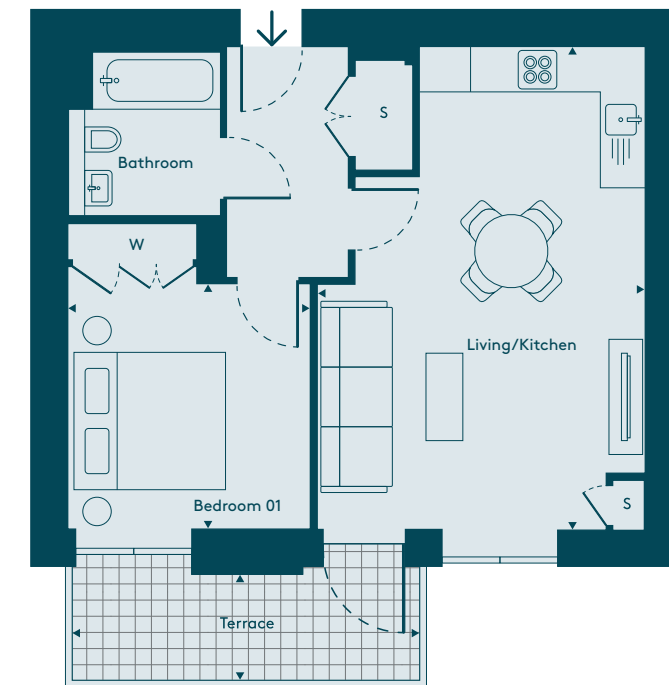
GIA Total 49.16m² 529.2ft²

Second Floor



APARTMENT 14

One Bedroom

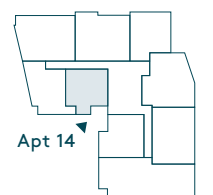


ES: En Suite
W: Wardrobe
S: Storage

Living/Kitchen	6.39m x 4.33m	(21'0" x 14'2")
Bedroom 01	4.04m x 3.20m	(13'3" x 10'6")
Terrace 01	4.60m x 1.52m	(15'1" x 5'0")

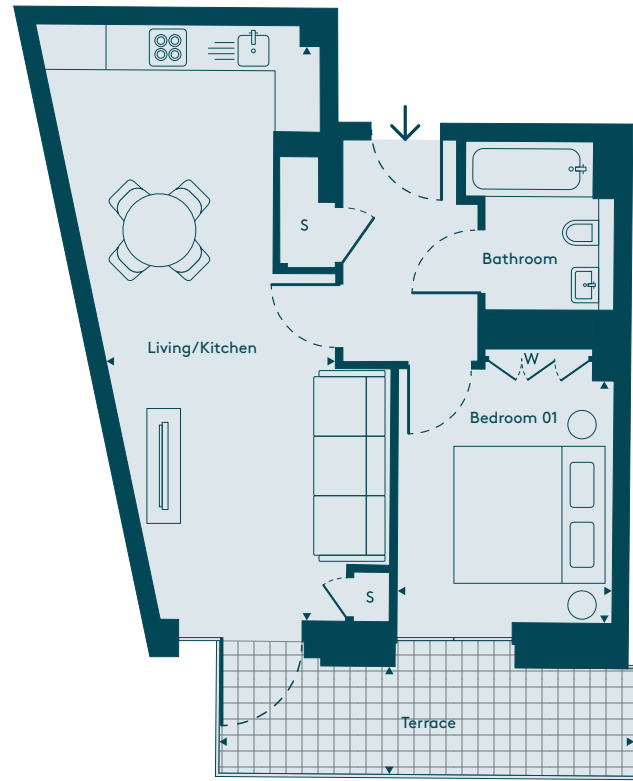
GIA Total 48.34m² 520.3ft²

Second Floor



APARTMENT 15

One Bedroom



ES: En Suite
W: Wardrobe
S: Storage

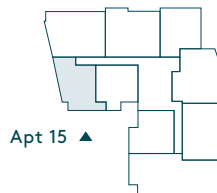
Living/Kitchen	7.89m x 3.77m	(25'11" x 12'4")
Bedroom 01	4.04m x 2.86m	(13'3" x 9'5")
Terrace 01	5.50m x 1.54m	(18'1" x 5'1")

GIA Total 48.14m² 518.2ft²

Second Floor



Apt 15 ▲



APARTMENT 16

Two Bedroom



ES: En Suite
W: Wardrobe
S: Storage

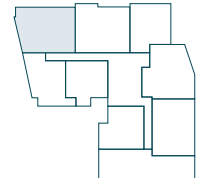
Living/Kitchen	6.40m x 4.91m	(21'0" x 16'1")
Bedroom 01	5.86m x 2.77m	(19'3" x 9'1")
Bedroom 02	4.60m x 2.80m	(15'1" x 9'2")
Terrace 01	5.03m x 1.78m	(16'6" x 5'10")

GIA Total 74.27m² 799.4ft²

Second Floor

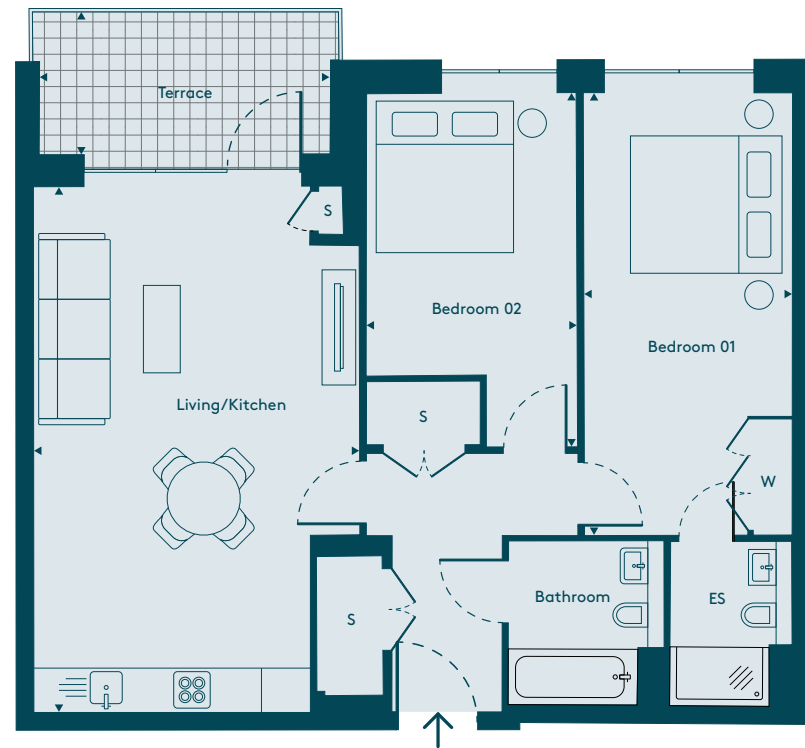


Apt 16 ▼



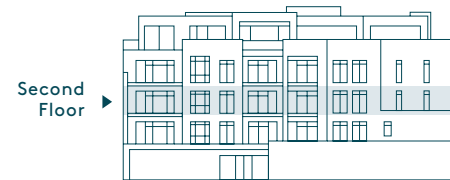
APARTMENT 17

Two Bedroom

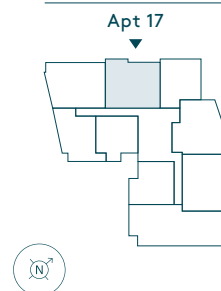


Living/Kitchen	6.96m x 4.31m	(22'10" x 14'2")
Bedroom 01	5.86m x 2.76m	(19'3" x 9'1")
Bedroom 02	4.69m x 2.80m	(15'5" x 9'2")
Terrace 01	4.05m x 1.88m	(13'3" x 6'2")

GIA Total 76.40m² 822.4ft²



ES: En Suite
W: Wardrobe
S: Storage



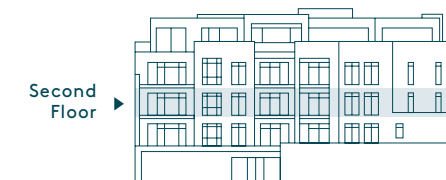
APARTMENT 18

One Bedroom

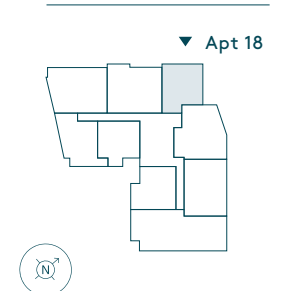


Living Kitchen	5.58m x 4.43m	(18'4" x 14'6")
Bedroom 01	4.62m x 2.94m	(15'2" x 9'8")
Terrace 01	3.52m x 1.89m	(11'7" x 6'2")

GIA Area 51.23m² 551.4ft²



ES: En Suite
W: Wardrobe
S: Storage



APARTMENT 19

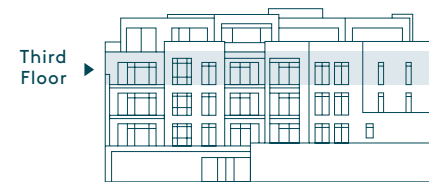
Two Bedroom



ES: En Suite
W: Wardrobe
S: Storage

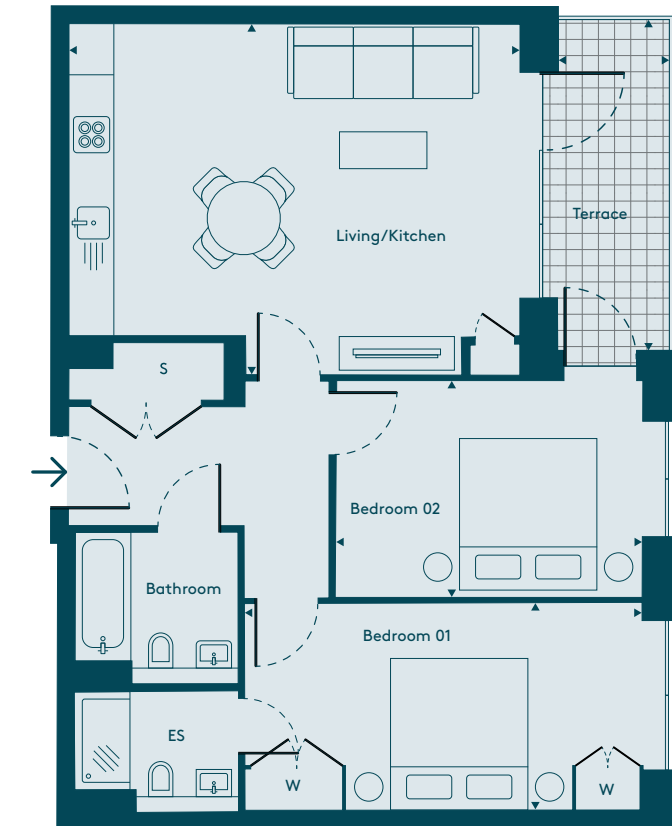
Living/Kitchen	7.79m x 3.88m	(25'7" x 12'9")
Bedroom 01	4.36m x 3.55m	(14'4" x 11'8")
Bedroom 02	4.77m x 2.89m	(15'8" x 9'6")
Storage	1.94m x 1.70m	(6'4" x 5'7")
Terrace 01	3.30m x 1.48m	(10'10" x 4'10")

GIA Total 75.23m² 809.8ft²



APARTMENT 20

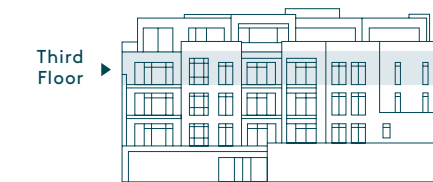
Two Bedroom



ES: En Suite
W: Wardrobe
S: Storage

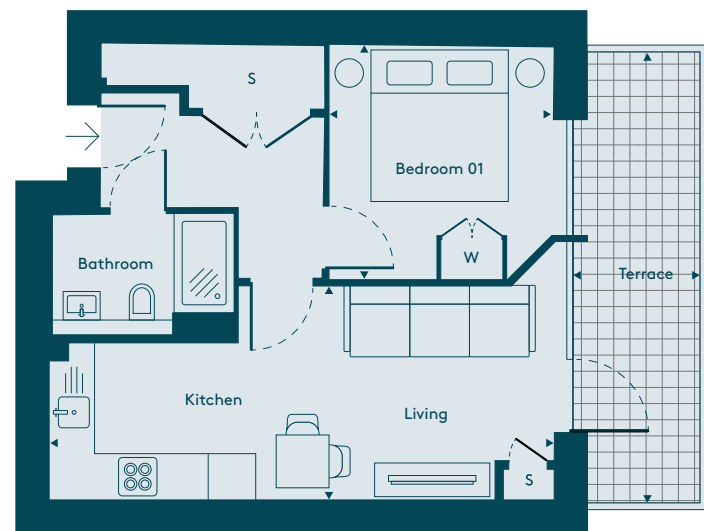
Living/Kitchen	5.97m x 4.64m	(19'7" x 15'3")
Bedroom 01	5.27m x 2.75m	(17'3" x 9'0")
Bedroom 02	4.06m x 2.87m	(13'4" x 9'5")
Terrace 01	4.38m x 1.47m	(14'4" x 4'10")

GIA Total 71.03m² 764.6ft²



APARTMENT 21

One Bedroom



ES: En Suite
W: Wardrobe
S: Storage

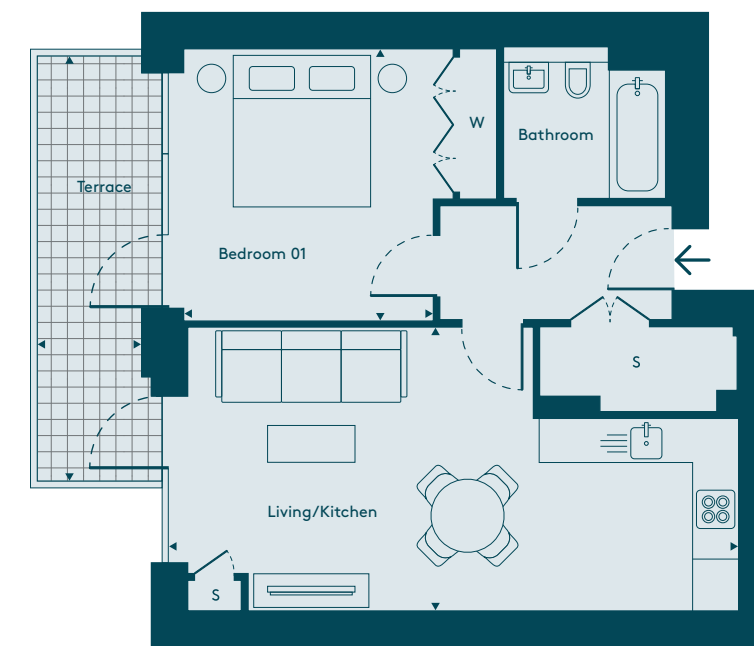
Living	4.19m x 2.89m	(13'9" x 9'6")
Kitchen	2.74m x 2.08m	(9'0" x 6'10")
Bedroom 01	3.09m x 2.98m	(10'2" x 9'9")
Terrace 01	5.98m x 1.48m	(19'7" x 4'10")

GIA Total 38.58m² 415.3ft²



APARTMENT 22

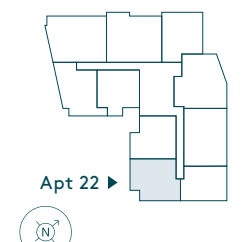
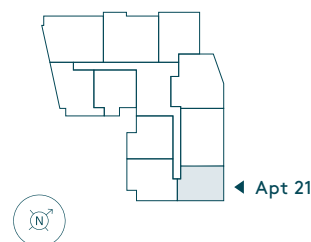
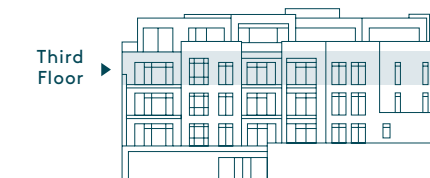
One Bedroom



ES: En Suite
W: Wardrobe
S: Storage

Living/Kitchen	7.28m x 3.76m	(23'11" x 12'4")
Bedroom 01	4.15m x 3.61m	(13'7" x 11'10")
Terrace 01	5.63m x 1.51m	(18'6" x 4'11")

GIA Total 50.93m² 548.2ft²



APARTMENT 23

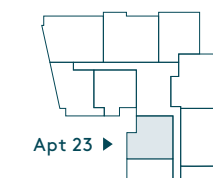
One Bedroom



ES: En Suite
W: Wardrobe
S: Storage

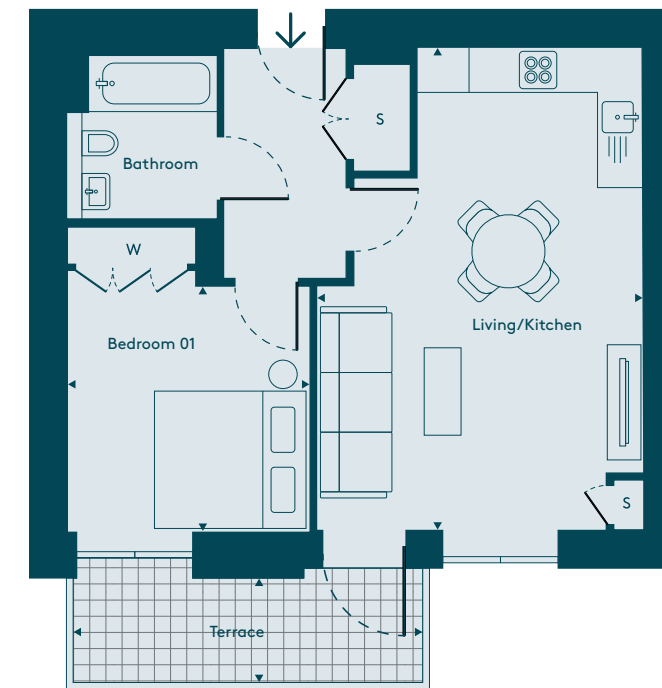
Living/Kitchen	6.49m x 4.38m	(21'4" x 14'4")
Bedroom 01	4.14m x 3.14m	(13'7" x 10'4")
Terrace 01	5.01m x 1.41m	(16'5" x 4'8")

GIA Total 49.15m² 529.0ft²



APARTMENT 24

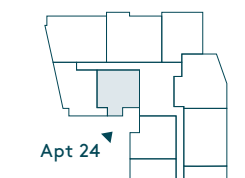
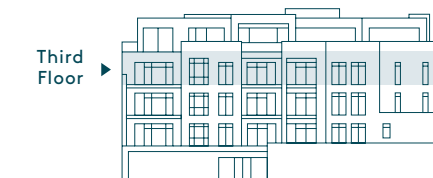
One Bedroom



ES: En Suite
W: Wardrobe
S: Storage

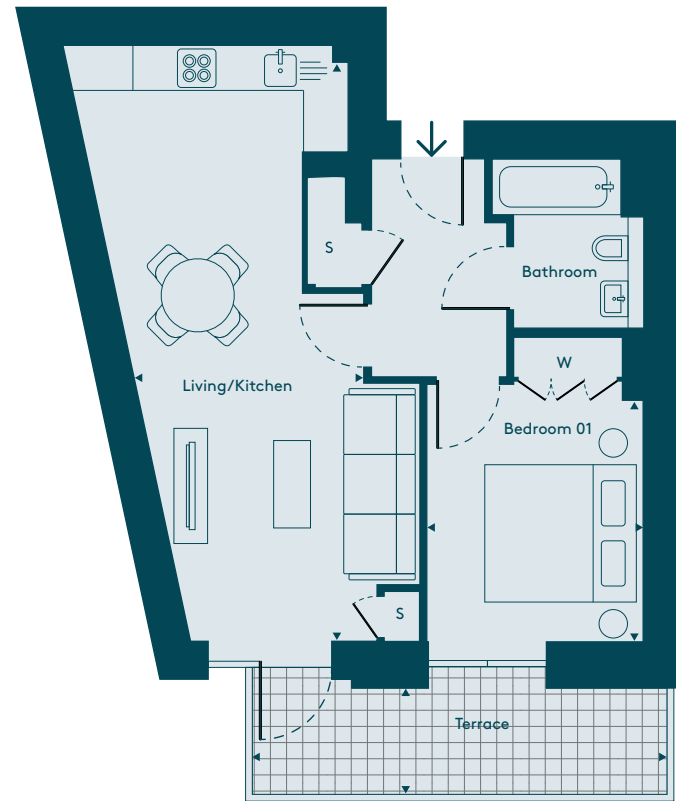
Living/Kitchen	6.39m x 4.34m	(21'0" x 14'3")
Bedroom 01	4.04m x 3.21m	(13'3" x 10'6")
Terrace 01	4.61m x 1.51m	(15'1" x 4'11")

GIA Total 48.56m² 522.7ft²



APARTMENT 25

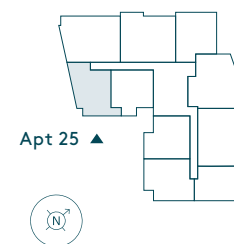
One Bedroom



ES: En Suite
W: Wardrobe
S: Storage

Living/Kitchen	7.88m x 3.77m	(25'10" x 12'4")
Bedroom 01	4.03m x 2.87m	(13'3" x 9'5")
Terrace 01	5.47m x 1.50m	(17'11" x 4'11")

GIA Total 48.00m² 516.7ft²



APARTMENT 26

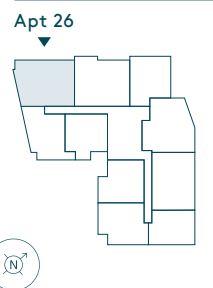
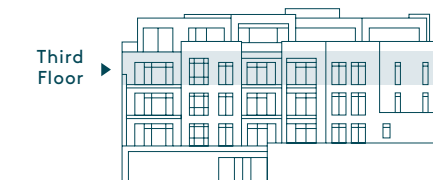
Two Bedroom



ES: En Suite
W: Wardrobe
S: Storage

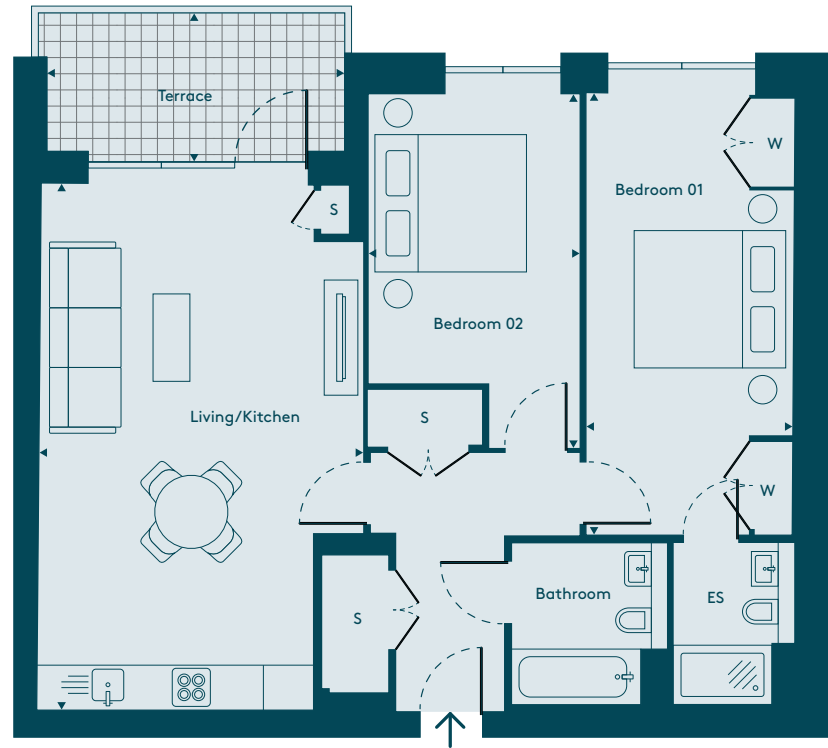
Living/Kitchen	6.41m x 4.94m	(21'10" x 16'2")
Bedroom 01	5.85m x 2.77m	(19'2" x 9'1")
Bedroom 02	4.59m x 2.78m	(15'1" x 9'1")
Terrace 01	5.03m x 1.73m	(16'6" x 5'8")

GIA Total 74.00m² 796.5ft²



APARTMENT 27

Two Bedroom



ES: En Suite
W: Wardrobe
S: Storage

Living/Kitchen	6.96m x 4.31m	(22'10" x 14'2")
Bedroom 01	5.86m x 2.77m	(19'3" x 9'1")
Bedroom 02	4.69m x 2.81m	(15'5" x 9'3")
Terrace 01	4.07m x 1.83m	(13'4" x 6'0")

GIA Total 76.03m² 818.4ft²



APARTMENT 28

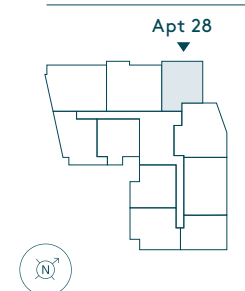
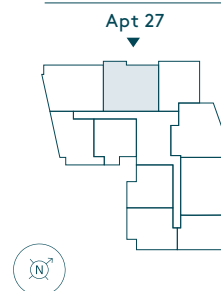
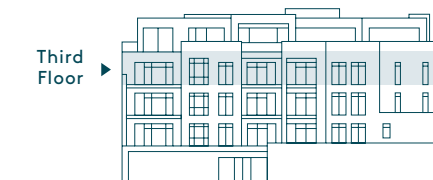
One Bedroom



ES: En Suite
W: Wardrobe
S: Storage

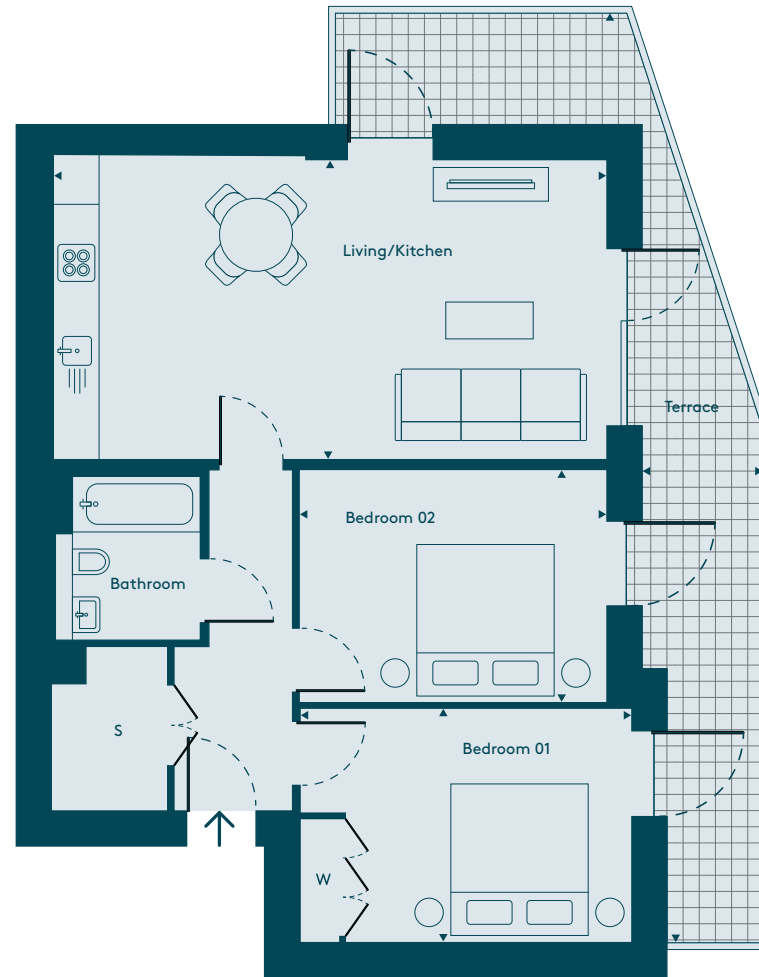
Living/Kitchen	7.32m x 4.39m	(24'0" x 14'5")
Bedroom 01	4.64m x 2.93m	(15'3" x 9'7")
Terrace 01	3.53m x 1.82m	(11'7" x 6'0")

GIA Total 51.34m² 552.6ft²



APARTMENT 29

Two Bedroom



ES: En Suite
W: Wardrobe
S: Storage

Living/Kitchen	7.31m x 4.02m	(24'0" x 13'2")
Bedroom 01	4.39m x 3.10m	(14'5" x 10'2")
Bedroom 02	4.07m x 3.08m	(13'4" x 10'1")
Storage	2.17m x 1.54m	(7'1" x 5'1")
Terrace 01	13.41m x 4.13m	(44'0" x 13'7")

GIA Total 71.30m² 767.5ft²



APARTMENT 30

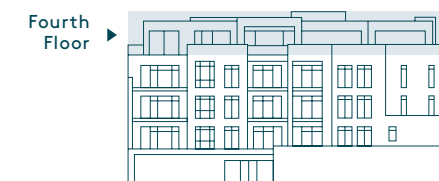
Two Bedroom



ES: En Suite
W: Wardrobe
S: Storage

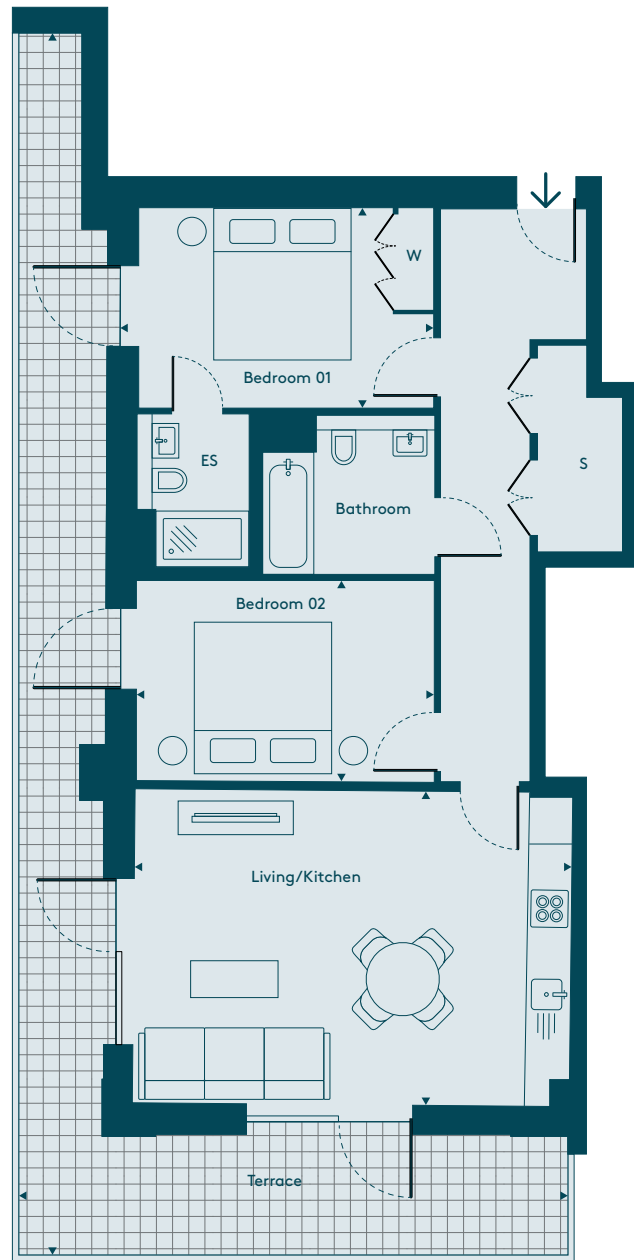
Living/Kitchen	6.00m x 4.61m	(19'8" x 15'1")
Bedroom 01	4.15m x 3.59m	(13'7" x 11'9")
Bedroom 02	4.39m x 2.81m	(14'5" x 9'3")
Terrace 01	8.08m x 1.53m	(26'6" x 5'0")
Terrace 02	6.58m x 1.43m	(21'7" x 4'8")

GIA Total 76.48m² 823.2ft²



APARTMENT 31

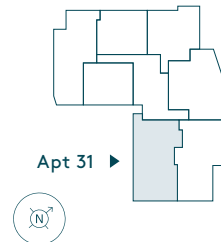
Two Bedroom



ES: En Suite
W: Wardrobe
S: Storage

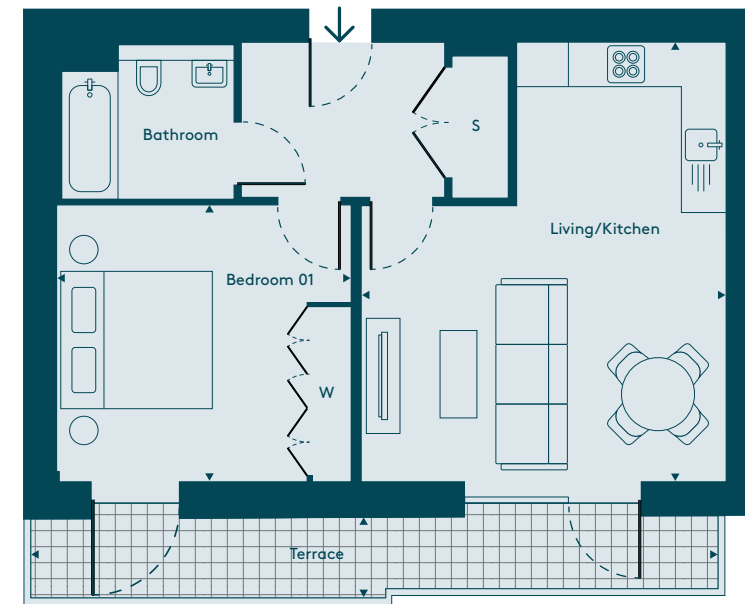
Living/Kitchen	6.12m x 4.39m	(20'1" x 14'5")
Bedroom 01	4.14m x 2.81m	(13'7" x 9'3")
Bedroom 02	4.17m x 2.82m	(13'8" x 9'3")
Terrace 01	16.89m x 7.68m	(55'5" x 25'2")

GIA Total 76.46m² 823.0ft²



APARTMENT 32

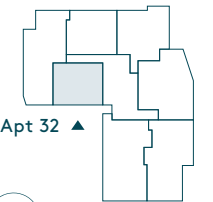
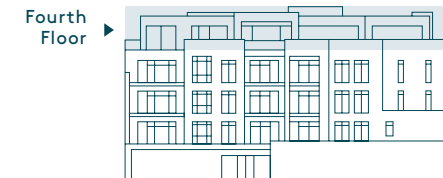
One Bedroom



ES: En Suite
W: Wardrobe
S: Storage

Living/Kitchen	5.83m x 4.84m	(19'2" x 15'11")
Bedroom 01	3.91m x 3.67m	(12'10" x 12'0")
Terrace 01	9.09m x 1.08m	(29'10" x 3'7")

GIA Total 51.38m² 553.0ft²



APARTMENT 33

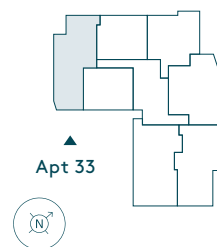
Two Bedroom



ES: En Suite
W: Wardrobe
S: Storage

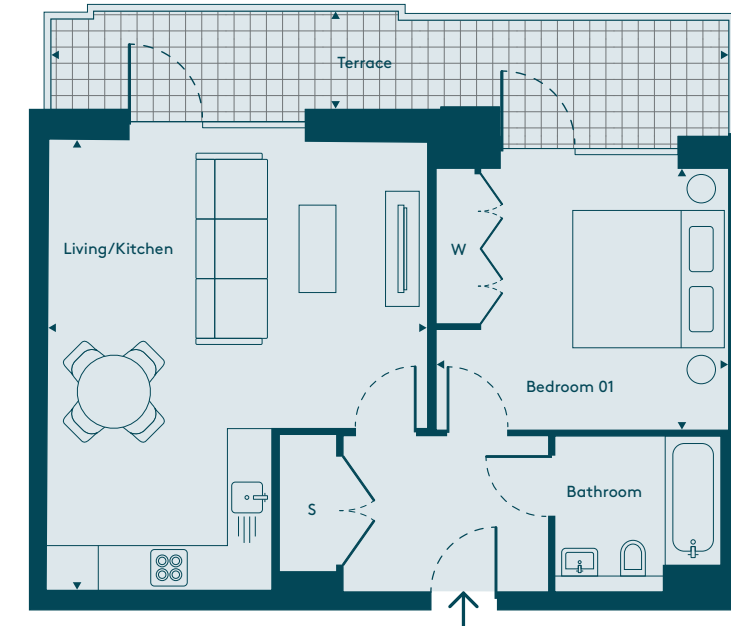
Living/Kitchen	5.76m x 4.95m	(18'11" x 16'3")
Bedroom 01	3.76m x 3.47m	(12'4" x 11'5")
Bedroom 02	4.52m x 3.40m	(14'10" x 11'2")
Terrace 01	5.22m x 2.98m	(17'2" x 9'9")
Terrace 02	5.00m x 1.32m	(16'5" x 4'4")

GIA Total 75.27m² 810.2ft²



APARTMENT 34

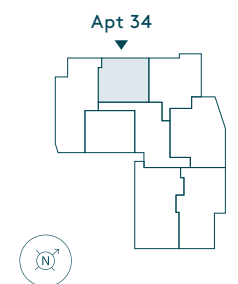
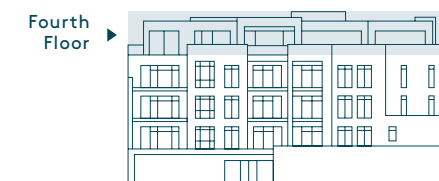
One Bedroom



ES: En Suite
W: Wardrobe
S: Storage

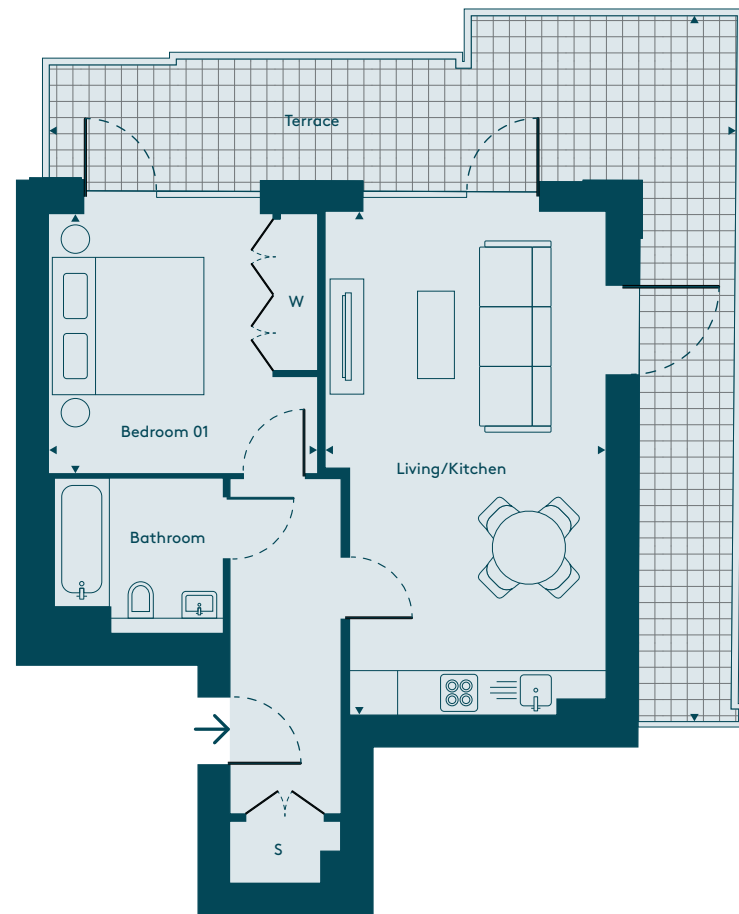
Living/Kitchen	5.97m x 5.02m	(19'7" x 16'6")
Bedroom 01	3.87m x 3.47m	(12'8" x 11'5")
Terrace 01	9.00m x 1.50m	(29'6" x 4'11")

GIA Total 52.17m² 561.6ft²



APARTMENT 35

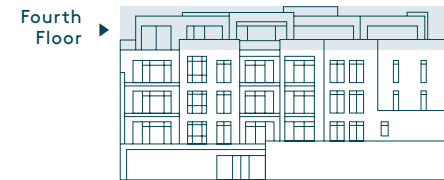
One Bedroom



ES: En Suite
W: Wardrobe
S: Storage

Living/Kitchen	6.67m x 3.73m	(21'11" x 12'3")
Bedroom 01	3.55m x 3.46m	(11'8" x 11'4")
Terrace 01	9.35m x 9.09m	(30'4" x 29'10")

GIA Total 49.75m² 535.5ft²





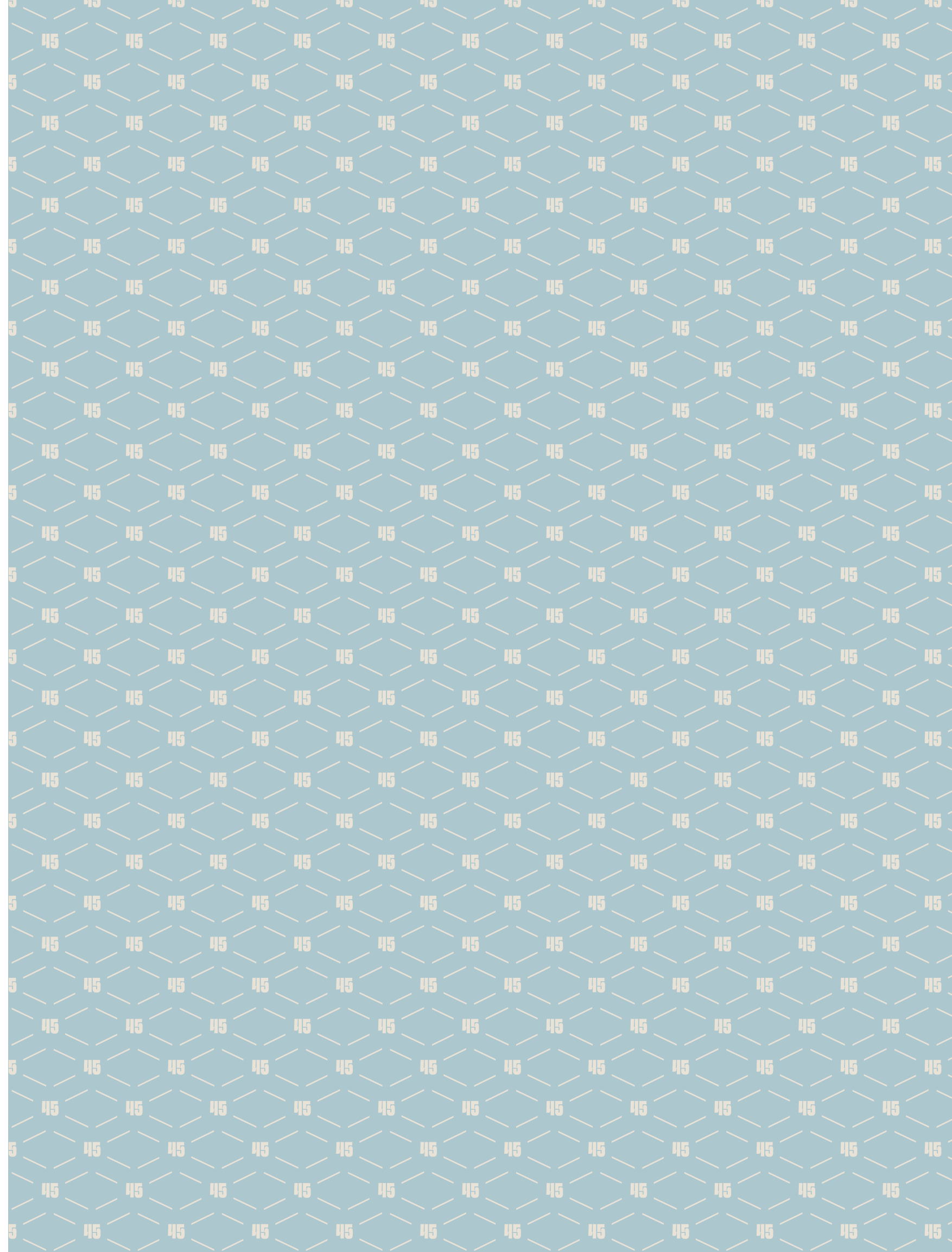
MOUNTWOOD

T: 07774 837693

E: info@mountwoodhomes.co.uk

mountwoodhomes.co.uk

Important Notice: Artist's perspectives, plans and diagrams used in this brochure are intended to be a general guide to the appearance of the development. All room dimensions are subject to change. Kitchen layouts are indicative only. Please consult the Sales Advisor for room dimensions and kitchen layouts. From time to time it is necessary for us to make architectural changes therefore prospective buyers should check the latest plans with our sales representative. Due to our policy of continual improvement we reserve the right to vary the specification as and when it may become necessary. Whilst all statements contained within this brochure are believed to be correct, they are not to be regarded as statements or representations of fact and neither the Agents nor their clients guarantee their accuracy. The statements are not intended to form any part of an offer or a contract. Brand and brochure designed by Ignite.



Dexters

020 8614 1222
newhomeswest@dexters.co.uk