



Benedict Drive, TW14

£475,000

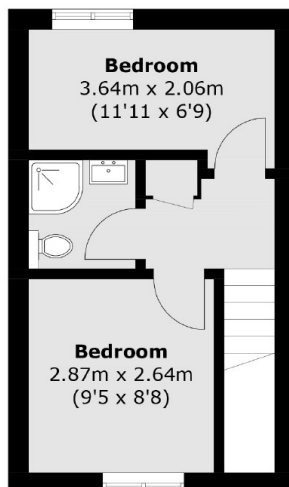
12A Benedict Drive is a wonderful three bedroom family home, spread perfectly between two floors on a quiet residential road in Feltham. The house has been carefully designed and finished to a high standard throughout. The house comprises of an open plan kitchen/living room, downstairs cloakroom and principle bedroom on the ground floor. Upstairs are two further bedroom and a three piece shower room. Further benefits include a lovely, landscaped garden and driveway parking.

Located on a quiet residential road, the property is also close to local amenities on Staines Road. Benedict Drive is only 1.1 miles to Hatton Cross tube station and only an 8 minute drive to Feltham station, which offers connections into London Waterloo.

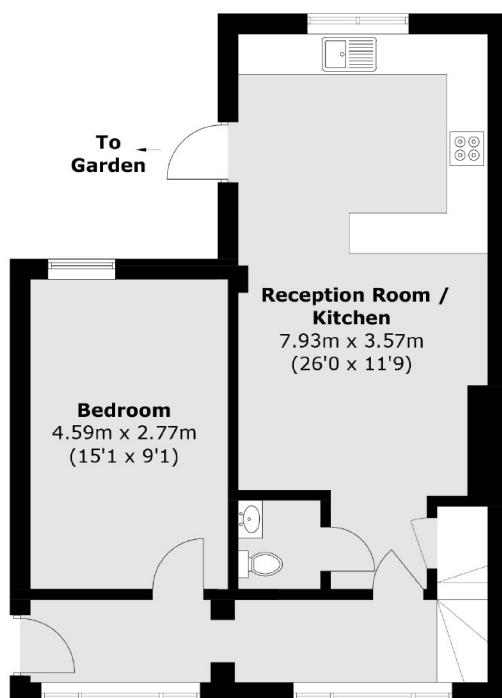
Features

High Specification
Quiet Location
Three Bedroom Home
Driveway Parking
Garden

Benedict Drive, Feltham, TW14



First Floor



Ground Floor

Total area (approx.): 77.9 sq. m (838.4 sq. ft)