



Benedict Drive, TW14

£595,000

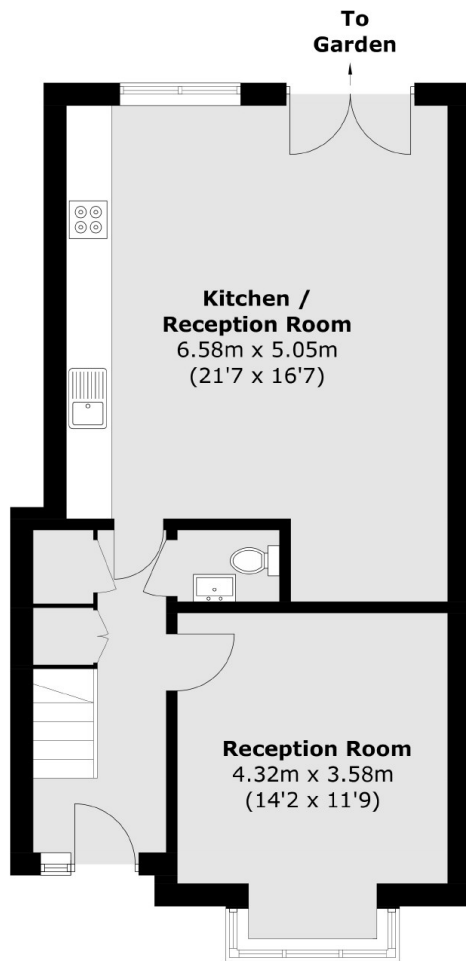
12 Benedict Drive is a superb four bedroom family home, spread perfectly over three floors on a quiet residential road in Feltham. The house has been carefully designed and finished to a high standard throughout, comprising of an front reception room, with bay window, large kitchen/diner, with integrated appliances and downstairs cloakroom on the ground floor. On the first floor are two double bedrooms, a further single bedroom and three piece shower room. The loft has been converted to create a large main bedroom. Further benefits include a lovely, landscaped garden and driveway parking.

Located on a quiet residential road, the property is also close to local amenities on Staines Road. Benedict Drive is only 1.1 miles to Hatton Cross tube station and only an 8 minute drive to Feltham station, which offers connections into London Waterloo.

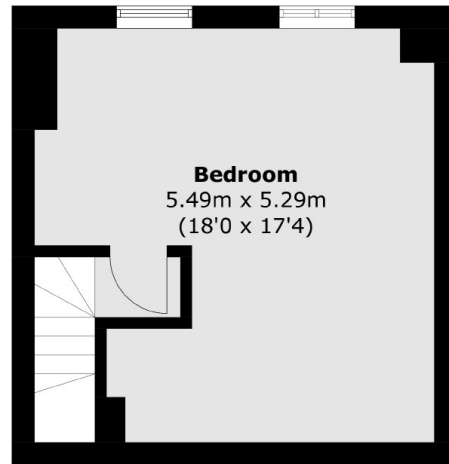
Features

High Specification
Quiet Location
Four Bedroom Home
Driveway Parking
Garden

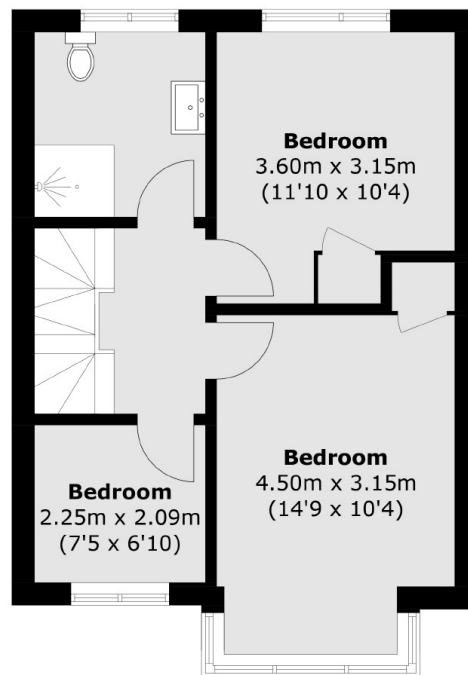
Benedict Drive, Feltham, TW14



Ground Floor



Second Floor



First Floor

Total area (approx.): 126.8 sq. m (1,364.7 sq. ft)