

Victoria Road, KT6

£599,950

A spacious 2 bedroom, penthouse apartment with breathtaking panoramic views. Ideally located in central Surbiton, just moments from the station and the buzzing High Street. The open plan layout creates an inviting airy ambiance, seamlessly connecting the kitchen and living space for a modern and stylish atmosphere. The development benefits from a communal roof terrace, where the sky becomes an extension of your living space; a panoramic retreat offering unrivaled views, designed to be your private perch above Surbiton.

Natural light streams through the windows of the sleek open plan kitchen with handleless kitchens and quartz worktops, with the living space having direct access to a large wrap-around terrace. The terrace is a private oasis, which offers unparalleled panoramic views; perfect for entertaining or unwinding.

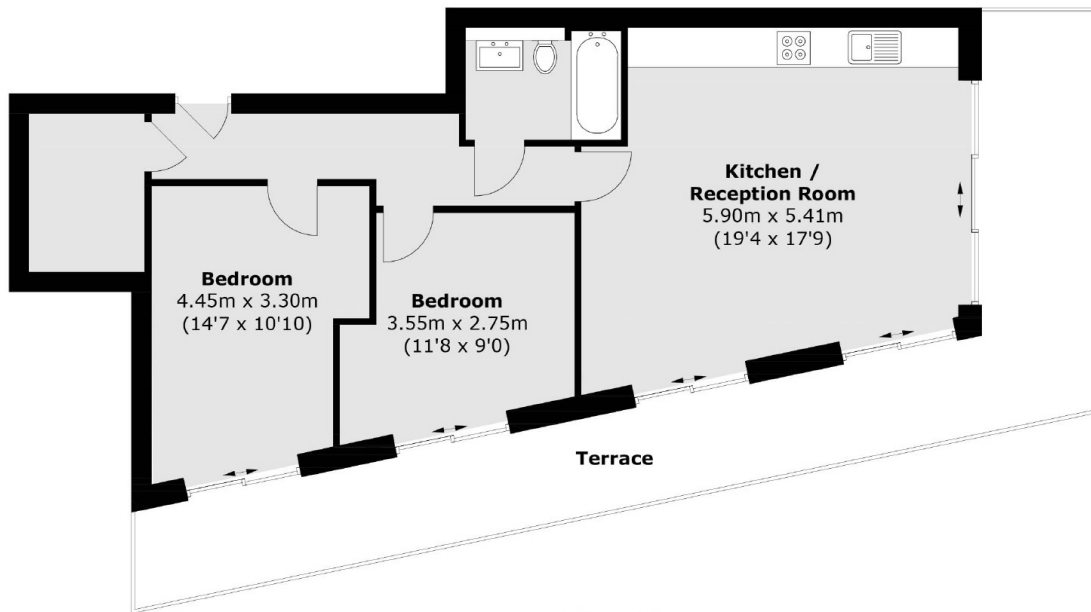
Prepare to be captivated by an exclusive communal roof terrace with breathtaking panoramic views that stretch as far as the eye can see. The terrace is a space where you unwind and soak in the view.

Surbiton station is well-connected to various destinations in and around London. It provides direct train services to central London, including London Waterloo, which is a major transportation hub.

Features

- Low Maintenance
- Energy Efficient
- Panoramic Rooftop Terrace
- Fast Direct Train To Waterloo
- Close To Amenities
- River Thames & Kingston Town Centre
- Parking Options Available

Victoria Road, Surbiton, KT6



**Flat 7
Third Floor**

Total area (approx.): 64.82 sq. m (697.72 sq. ft)
Terrace : 27.52 sq. m (296.22 sq. ft)