



Barn Close, KT10

£925,000

This beautiful Denton Homes is thoughtfully designed offering contemporary elegance and timeless charm. Situated in a peaceful cul-de-sac in Hinchley Wood, this location offers the perfect balance of tranquility, convenience, and community spirit making it an ideal place to live for those seeking a peaceful yet well-connected lifestyle.

Photos are for illustrative purposes and are of a previous home in the development.

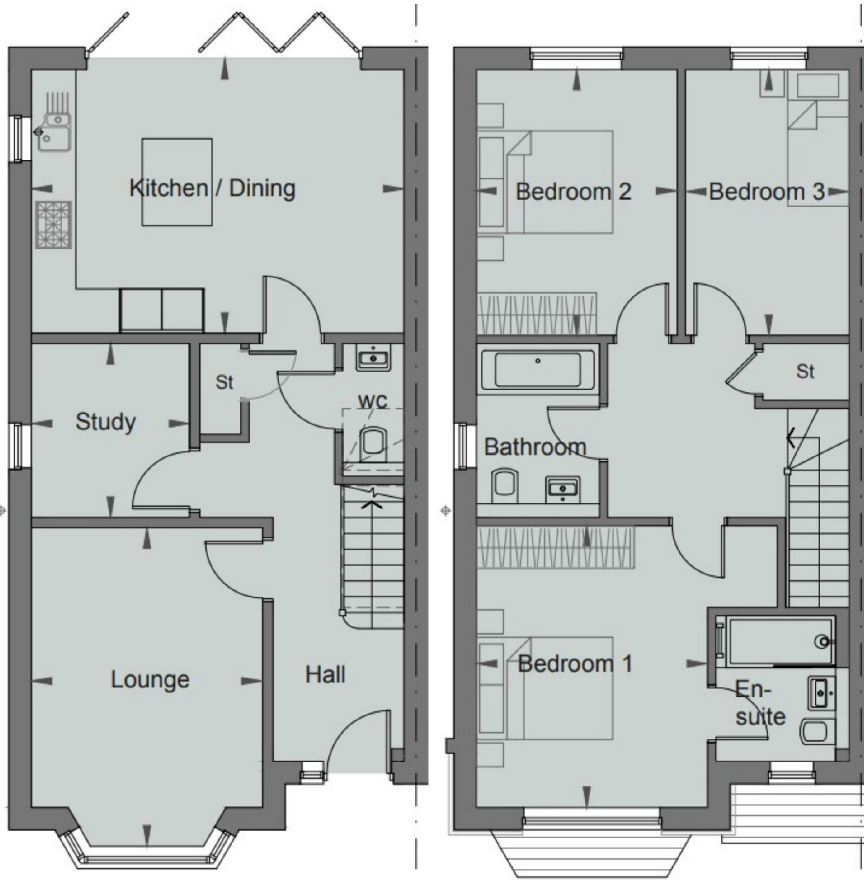
Step into a world of refined living as you enter the ground floor into the welcoming hallway that sets the tone of elegance that flows through this home. The living room is bathed in natural light that pours in through a charming bay window, this space offers a serene retreat for quiet moments or lively gatherings with loved ones. Next to the living room lies a private study, ideal for those seeking a dedicated workspace or a cozy reading nook. With its tranquil atmosphere, this room provides a peaceful sanctuary for work or leisure pursuits. At the heart of the home awaits the pièce de résistance a generously sized kitchen breakfast room that seamlessly merges style with functionality. Equipped with state-of-the-art appliances, sleek cabinetry, and expansive countertops, this culinary haven inspires culinary creativity. But the true marvel lies in the huge bi-fold doors that grace the rear wall, inviting the outdoors in and flooding the space with natural light. As you savor your morning coffee or prepare a gourmet meal, you'll be serenaded by the sights and sounds of the private garden just beyond, creating a seamless indoor-outdoor connection that epitomizes modern luxury living. Step through the bi-fold doors and into your own private garden paradise. Whether you're entertaining guests, enjoying a leisurely brunch, or simply unwinding after a long day, this outdoor sanctuary provides the perfect backdrop for relaxation and rejuvenation.

Barn Close is located a convenient location, within walking distance of Hinchley Wood shops, the mainline train station and in the catchment area of Hinchley Wood Primary & Secondary Schools.

Features

- Energy Efficient
- Low maintenance
- Brand New
- Parking
- Last remaining Home
- 10 Year Warranty

Barn Close, Esher, KT10



GROUND FLOOR

LOUNGE	3.39 X 4.66 m	11' 1" X 15' 4"
STUDY	2.32 X 2.55 m	7' 7" X 8' 4"
KITCHEN /DINING	5.45 X 4.02m	17'11" X 13' 2"

FIRST FLOOR

BEDROOM 1	3.39 X 4.13 m	11' 1" X 13' 7"
BEDROOM 2	2.94 X 3.90 m	9' 8" X 12' 9"
BEDROOM 3	2.40 X 3.90 m	7'10" X 12' 9"
GIA	116 m ² 1251 ft ²	