



## Hanworth Road, TW3

£320,000

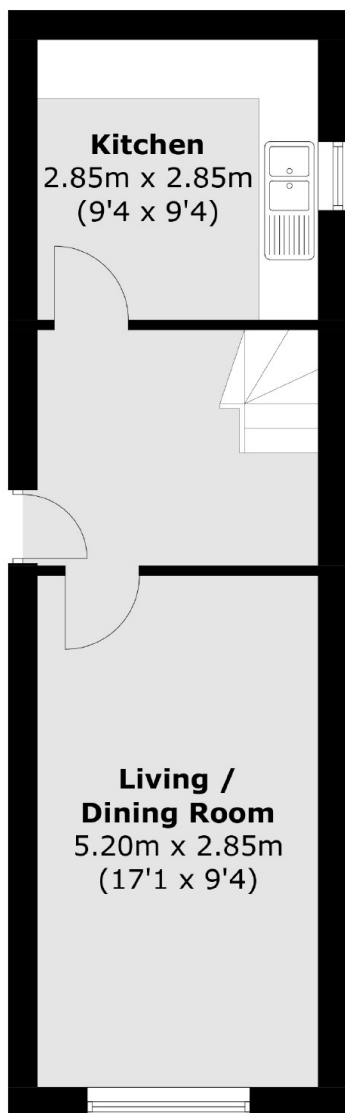
Introducing a brand-new development consisting of just four contemporary apartments, including one bedrooms, a two-bedroom unit, and a studio. Nestled in a sought-after location, mere minutes from local transport links, schools, and Hounslow High Street. These properties promise stylish living spaces, open-plan kitchen/lounge areas equipped with top-quality integrated appliances, exquisite bathrooms, and outdoor areas for relaxation.

Nestled in the sought-after TW3 area, this property boasts excellent transport connections, convenient amenities, and nearby green spaces, providing its owners with a well-rounded and convenient lifestyle. Just 0.5 miles away from the outstanding Heathland School and close to Hounslow Heath, residents can enjoy both educational excellence and natural beauty. Additionally, Hounslow Station, approximately a mile away, offers direct links into London Waterloo,

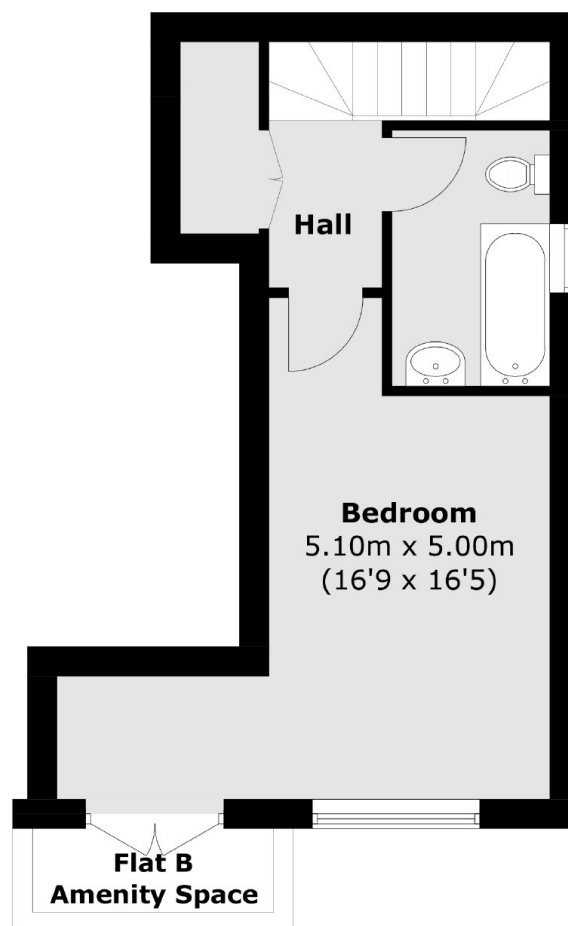
### Features

- Brand new conversion
- Ready to move into
- Four luxury newly built apartments
- Solar panels
- Arranged over three floors
- Communal outdoor space
- Integrated appliances
- Fantastic location
- Unique development
- Early interest is highly recommended

# Hanworth Road, Hounslow, TW3



**Ground Floor**



**First Floor**

Total area (approx.): 58.0 sq. m (624.2 sq. ft)