

St. Philips Road, KT6

£995,000

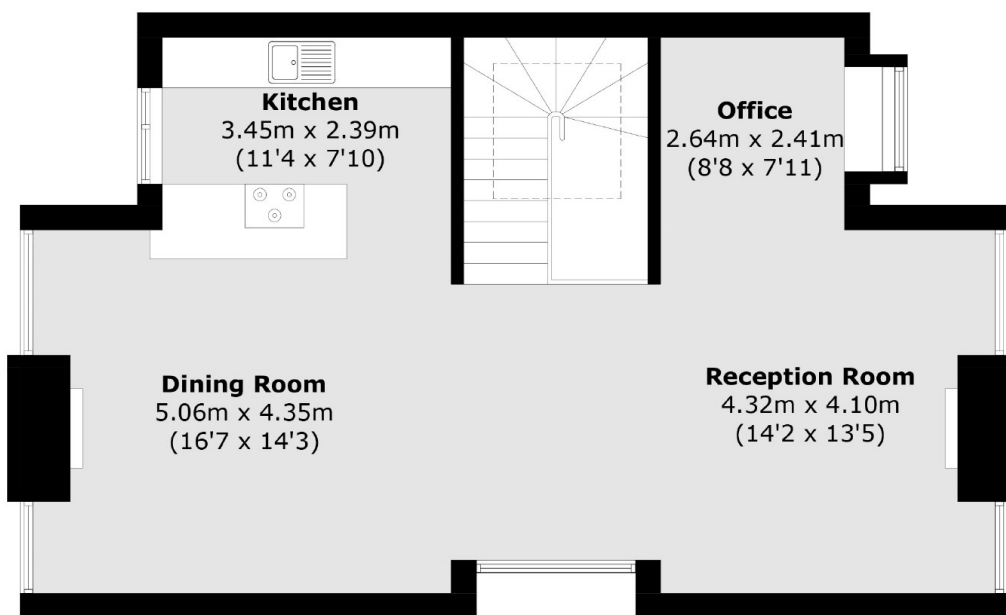
A brand new modern masterpiece, that offers spacious open plan living that seamlessly integrates style and functionality. This stunning home comprises two generously sized bedrooms, both with en-suite bathroom, an expansive open plan living area, with a private outdoor oasis. With a focus on energy efficiency and low maintenance, this home is the epitome of contemporary living. The open plan layout, along with vaulted ceilings, creates a sense of spaciousness, providing versatile living, making this the perfect home for entertaining or relaxation. This home boasts the latest modern appliances and a high end finish, where every detail has been curated to offer a luxurious lifestyle.

Nestled in central Surbiton, this home is strategically positioned behind the bustling Victoria Road. Experience the tranquility of a tucked away home, which is only a few steps from all the shops and restaurants that Surbiton has to offer. Commuting to London is a breeze, with Surbiton Station only a few minutes walk away, with trains to London Waterloo in under 20 minutes; making this home an ideal choice for those who value both city living and urban tranquillity.

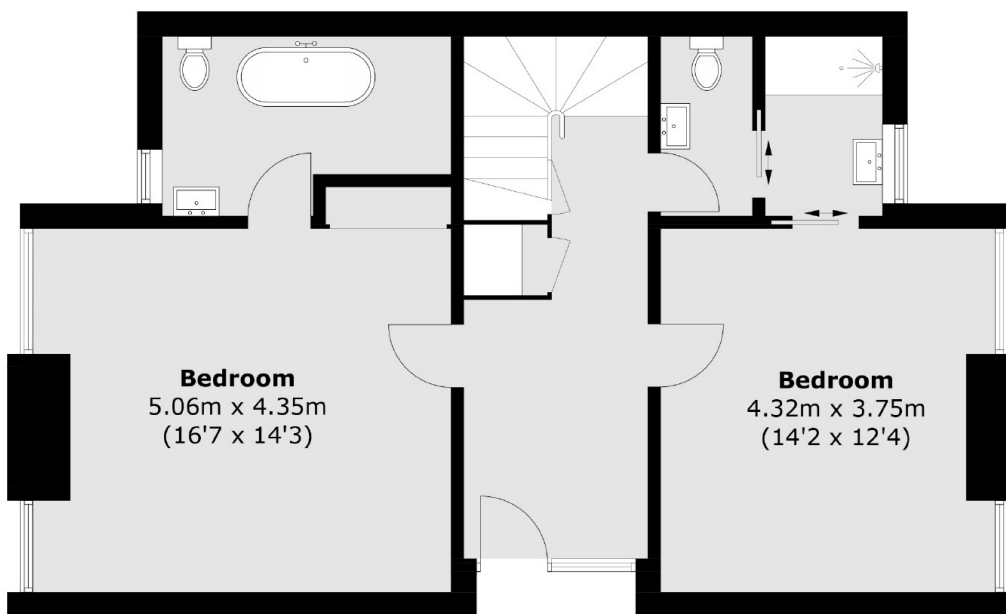
Features

- Energy Efficient
- Low Maintenance
- 10 Year Warranty
- Prime Location
- High Specification

St. Philips Road, Surbiton, KT6



First Floor



Ground Floor

Total area (approx.): 137.1 sq. m (1,475.8 sq. ft)