



Oak Hill Road, KT6

£700,000

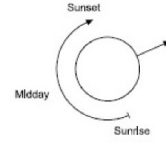
Newlands House is a development of 41 one, two and three bedroom properties located on a quiet residential street in Surbiton, a short distance from the River Thames and Hampton Court Park. It combines the conversion of an historic property within the Oakhill Conservation area, with beautiful new build properties. Ready To Move In!

Newlands House provides a peaceful residential setting, with open space provided by The Wood, immediately next to the development. Surbiton station is situated 5 minutes away serving London Waterloo in under 20 minutes. The A3 is close by giving easy access to Central London, the M25, Heathrow and Gatwick airports.

Features

- Ready To Move In!
- Impeccably Finished
- Very High Specification
- Close to Surbiton Station
- A3 Access
- Conservation Area

Oak Hill Road, Surbiton, KT6



FLAT 1 - Newlands House, 3 Oak Hill (2 Bed Apartment)



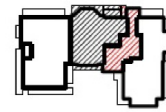
Dimensions

Circulation	9.7 Sq. m	104.5 Sq. '
Storage	6.0 Sq. m	64.7 Sq. '
Kitchen/Living/Dining room	33.2 Sq. m	357.1 Sq. '
Bathroom	4.5 Sq. m	48.8 Sq. '
En-suite	3.6 Sq. m	41.7 Sq. '
Bedroom 1	14.6 Sq. m	157.3 Sq. '
Bedroom 2	12.8 Sq. m	137.4 Sq. '
Patio 1/2/3	19.3 Sq. m	207.8 Sq. '
Total Gross Internal	84.8 Sq. m	913.0 Sq. '

Level location

Floor locator

- 2nd floor
- 1st floor
- Upper Ground Floor
- Lower Ground Floor



Lower Ground Floor

