

# Towers Wills

Town & Country

📞 01935 577 032 | 01460 298 530 | ✉ info@towerswills.co.uk



49, Matthews Road, Yeovil, Somerset BA21 4JQ

**£180,000**

Towers Wills are pleased to bring to market this three bedroom semi-detached family home, in need of some light modernisation and situated within close proximity to the town centre and many local amenities. The property briefly comprises entrance hall, living room, dining room, kitchen, conservatory, shower room, three double bedrooms, rear garden and driveway parking to the front. The property also benefits from NO FORWARD CHAIN.

## ENTRANCE HALL

Double glazed window to front door, radiator, doors to the sitting room, dining room and downstairs.

## SITTING ROOM 3.71m x 3.88m

Double glazed window to front, radiator, storage cupboard and door to kitchen.

## DINING ROOM 2.84m x 3.36m

Double glazed window to rear, radiator and entrance to kitchen.

## KITCHEN 3.71m x 1.75m

alley style kitchen with a range of wall, base and drawer units, stainless steel sink with drainer and mixer tap, space for freestanding oven, two single glazed windows to rear and door to conservatory.

## CONSERVATORY 4.02m x 1.66m

Double glazed door to rear and power.

## DOWNSTAIRS W.C 1.35m x 1.41m

Low level W.C, wash hand basin, double glazed window to side and boiler.

## BEDROOM ONE 3.93m x 3.42m

Double glazed window to rear and radiator.

## BEDROOM TWO 2.70m x 3.42m

Double glazed window to rear and radiator.

## BEDROOM THREE 2.86m x 2.29m

Double glazed window to front and radiator.

## SHOWER ROOM 1.34m x 2.05m

Free standing shower cubicle, low level W.C, wash hand basin, double glazed window to front, radiator and extractor fan.

## OUTSIDE

The front of the property benefits from a lawned area with a mature hedge and off road parking for multiple cars. To the rear, the property benefits from a garden being mainly laid to lawn with a patio area.

## Key Features

- Semi-Detached
- Three Double Bedrooms
- Conservatory
- Rear Garden
- Driveway

## Contact Us

### Towers Wills Estate Agents - Yeovil

114, Hendford Hill

Yeovil

Somerset

BA202RF

T: 01935 577032

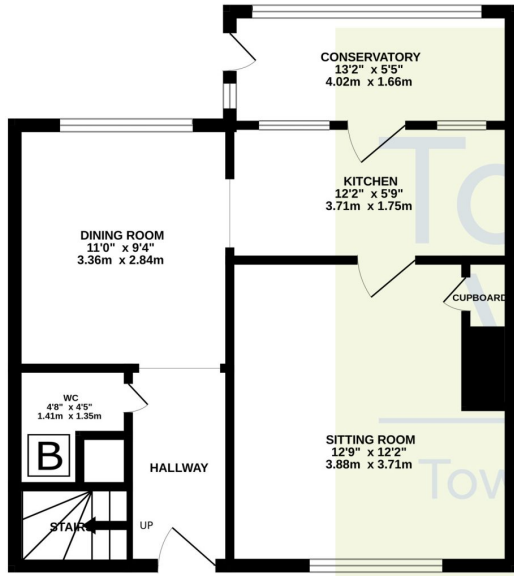
E: [info@towerswills.co.uk](mailto:info@towerswills.co.uk)



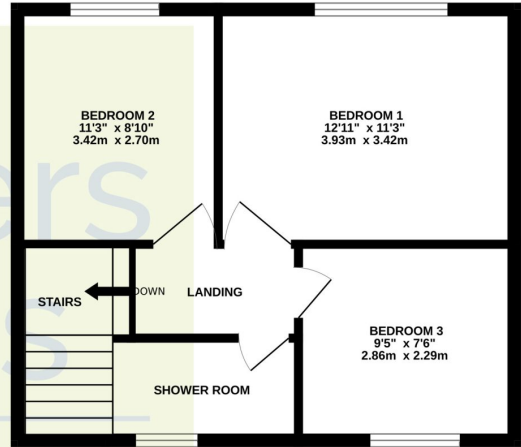


# Floor Plan

GROUND FLOOR



1ST FLOOR



Whilst every attempt has been made to ensure the accuracy of the floorplan contained here, measurements of doors, windows, rooms and any other items are approximate and no responsibility is taken for any error, omission or mis-statement. This plan is for illustrative purposes only and should be used as such by any prospective purchaser. The services, systems and appliances shown have not been tested and no guarantee as to their operability or efficiency can be given.  
Made with Metropix ©2024

Please Note No tests have been undertaken of any of the services and any intending purchasers should satisfy themselves in this regard. Towers Wills Ltd for themselves and for the vendor of this property whose agents they are, give notice that, (i) these particulars do not constitute any part of an offer or contract, (ii) all statements contained within these particulars are made without responsibility on the part of Towers Wills or the vendor, (iii) whilst made in good faith, none of the statements contained within these particulars are to be relied upon as a statement of representation or fact, (iv) any intending purchaser must satisfy him/herself by inspection or otherwise as to the correctness of each of the statements contained within these particulars, (v) the vendor does not make or give either Towers Wills or any person in their employment any authority to make or give representation or warranty whatsoever in relation to this property.

Photographs / Floor Plans Photographs are reproduced for general information and it must not be inferred that any item is included for sale with this property. Please note floor plans are not to scale and are for identification purposes only. The photographs used in these particulars may have been taken with the use of a wide angle lens. If you have any queries as to the size of the accommodation or plot, please address these with the agent prior to making an appointment to view