

Towers Wills

Town & Country

£525,000



6 Barrows Court, Weston Street, East Chinnock, Somerset, BA22 9EJ

Towers Wills welcome to the market this substantial four bedroom, four reception barn conversion which is situated in a private tucked away position within this popular village and briefly comprising: storm porch, reception hallway, cloak/wc, 23ft living room, kitchen/breakfast room, dining room, snug/day room, study, conservatory, four bedrooms, en-suite, bathroom, large gardens, driveway and detached double garage.

Key Features

- Four bedrooms
- Four reception rooms
- Versatile accommodation
- Large garden
- Double garage
- Private tucked away position in sought after village

Storm Porch

Sheltered area with ham stone elevations and pitched roof.

Reception Hallway

Glazed door to the front, window to the front, radiator and under stairs storage cupboard.

Cloak/WC

Comprising of wc, wash hand basin, tiling to splashback, window to the front and radiator.

Living Room 7.00m x 3.94m

A large family living area with windows to the rear and patio doors opening through to the conservatory, wood burning stove with solid Minster stone carved surround, two radiators and door to study.

Study 2.30m x 2.08m

Window to the front and radiator.

Day Room/Snug 4.20m x 3.43m

A cosy room with wood burning stove, pleasant outlook to the rear garden, window to the rear, timber floor, radiator and double doors through to the conservatory.

Kitchen/Breakfast Room 4.57m x 3.93m

Comprising of a range of wall, base and drawer units, inset sink/drainers with timber work surfacing, tiled floor, tiling to splash prone areas, space for fridge/freezer, Rayburn cooker (oil), integrated hob (LPG gas bottle fed), window to the front, glazed stable door to the utility room.

Utility area: 5.32m x 1.40m

With wall and base units, work surfacing with inset sink/drainers, tiled floor, doors to the front of the property, door to the rear of the property and plumbing for washing machine

Dining Room 3.95m x 3.00m

Window to the side, two radiators and glazed double doors opening through to the day room/snug.

Conservatory 3.81m x 3.06m

Double doors opening out onto the garden, tiled floor and doors to both day room/snug and living room.



Landing 2.40m x 2.50m

Window to the front, loft access and airing cupboard.

Master Bedroom 4.65m x 3.20m

Pleasant outlook with window to the rear, fitted wardrobes and drawers, radiator and door to en-suite.

En-suite 2.76m x 2.06m

A beautifully presented full bathroom comprising of bath, separate shower cubicle, wash hand basin, wc, part tiled, heated towel rail and window to the front.

Bedroom Two 3.60m x 3.20m

Window to the side, archway through to an additional bedroom area measuring **3.76m x 3.43m** and currently used as a study. Double doors to the balcony with stunning views across the garden and open countryside.

Bedroom Three 3.71m x 2.84m

Window to the front and radiator.

Bedroom Four 2.80m x 2.55m

Window to the front and radiator.

Bathroom 2.50m x 2.00m

Suite comprising of bath with shower over, wash hand basin, wc, part tiled, radiator and window to the rear.

Outside

To the front of the property is a courtyard area set back in a private position which offers vehicular access and additional parking to the property. Additional parking area for vehicles, ideal for caravan/motorhome etc. Gated side access through to a courtyard area with space for rotary washing line, outside garden tap, large wood store area and additional gate leading to the rear garden.

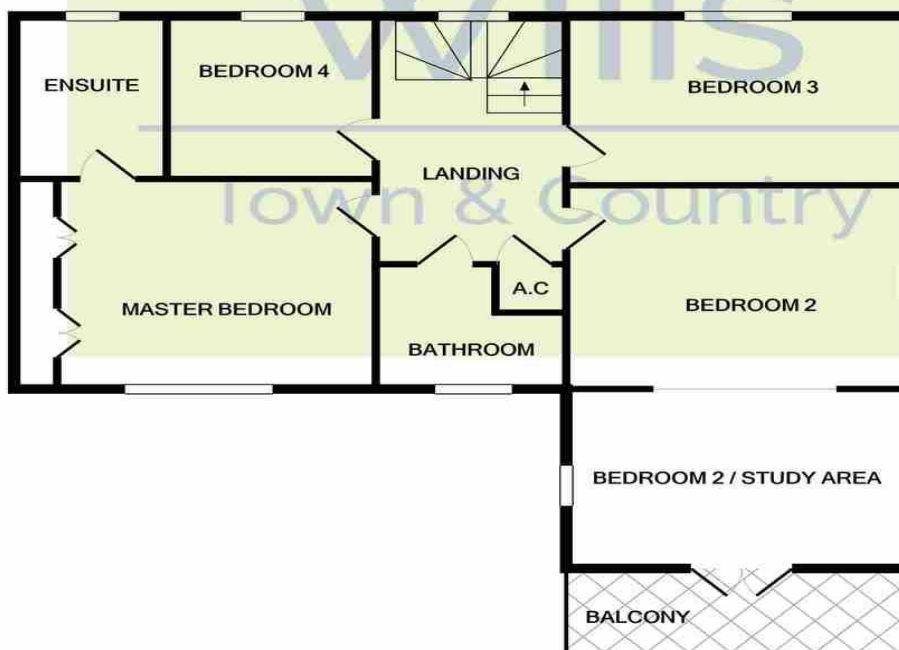
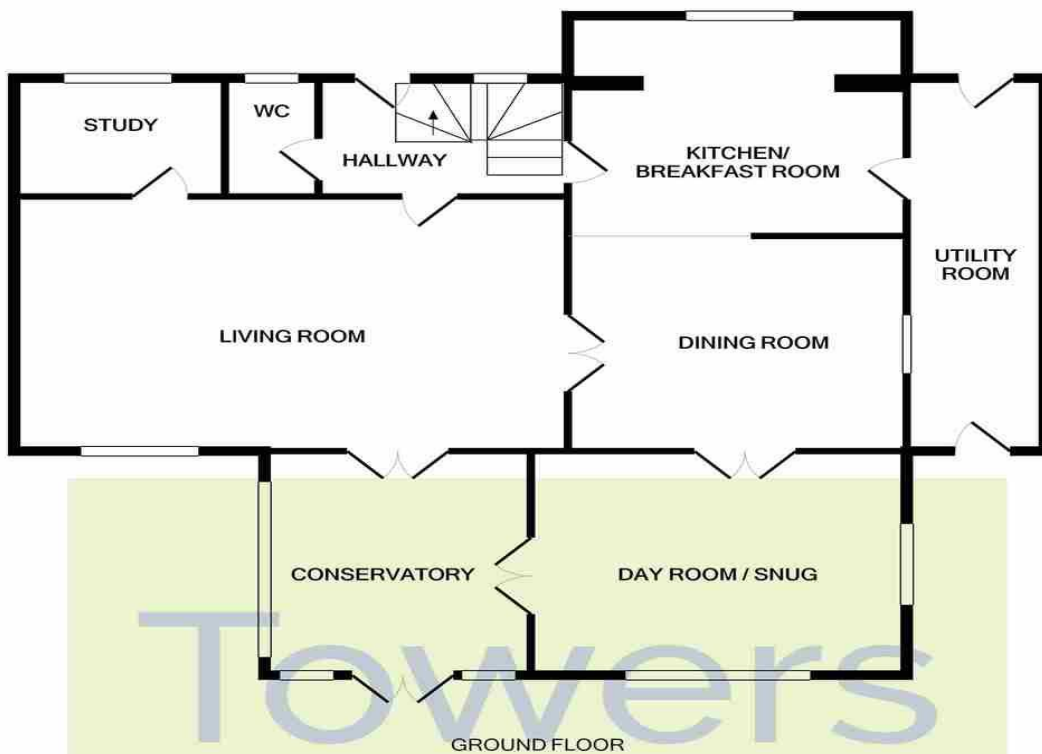
Double Garage 5.20m x 5.12m

With two 'up and over' doors, power and light.

Rear Garden

Being a true selling feature of the property, currently divided into two sections. The nearest to the property being majority laid to lawn with planted stocked borders, Magnolia tree and patio area. Two gates lead through to a large further area of garden, again being majority laid to lawn, stocked borders and vegetable patch.

Floor Plan



1ST FLOOR

Whilst every attempt has been made to ensure the accuracy of the floor plan contained here, measurements of doors, windows, rooms and any other items are approximate and no responsibility is taken for any error, omission, or mis-statement. This plan is for illustrative purposes only and should be used as such by any prospective purchaser. The services, systems and appliances shown have not been tested and no guarantee as to their operability or efficiency can be given.
Made with Metropix ©2020

Please Note No tests have been undertaken of any of the services and any intending purchasers should satisfy themselves in this regard. Towers Wills Ltd for themselves and for the vendor of this property whose agents they are, give notice that, (i) these particulars do not constitute any part of an offer or contract, (ii) all statements contained within these particulars are made without responsibility on the part of Towers Wills or the vendor, (iii) whilst made in good faith, none of the statements contained within these particulars are to be relied upon as a statement of representation or fact, (iv) any intending purchaser must satisfy him/herself by inspection or otherwise as to the correctness of each of the statements contained within these particulars, (v) the vendor does not make or give either Towers Wills or any person in their employment any authority to make or give representation or warranty whatsoever in relation to this property.

Photographs / Floor Plans Photographs are reproduced for general information and it must not be inferred that any item is included for sale with this property. Please note floor plans are not to scale and are for identification purposes only. The photographs used in these particulars may have been taken with the use of a wide angle lens. If you have any queries as to the size of the accommodation or plot, please address these with the agent prior to making an appointment to view.

Towers Wills

The White House, 114 Hendford Hill, Yeovil BA20 2RF

Yeovil 01935 577032 / South Petherton 01460 298530

info@towerswills.co.uk www.towerswills.co.uk