

# Towers Wills

Town & Country

📞 01935 577 032 | 01460 298 530 | ✉ info@towerswills.co.uk



**29, Bell Chase, Yeovil, Somerset BA20 2FE**

**£275,000**

Situated in this sought-after residential location, close to Yeovil town centre, a range of local amenities and supermarkets, Yeovil District Hospital and the Leonardo (AgustaWestland) site, this three-bedroom end of terrace home is presented in very good condition throughout and is offered to the market with the added benefit of no onward chain.

### **Accommodation:**

Situated in this sought-after residential location, close to Yeovil town centre, a range of local amenities and supermarkets, Yeovil District Hospital and the Leonardo (AgustaWestland) site, this three-bedroom end of terrace home is presented in very good condition throughout and is offered to the market with the added benefit of no onward chain.

The accommodation is well proportioned and thoughtfully arranged. On the ground floor, the property offers a welcoming entrance hall with a useful downstairs cloakroom, leading through to a large and spacious lounge which provides an excellent living space. This flows seamlessly into a well-appointed kitchen/diner, ideal for both everyday family life and entertaining, with double doors opening directly onto the rear garden, allowing for plenty of natural light.

To the first floor, there are three bedrooms, two of which are comfortable doubles. The main bedroom benefits from its own ensuite shower room, while the remaining bedrooms are served by a modern family bathroom.

### **Outside:**

Outside, the property enjoys a low-maintenance rear garden, perfect for those seeking an easy-care outdoor space. Additionally, there is a single garage located nearby, along with one allocated parking space, providing convenient off-road parking.

An excellent opportunity to acquire a well-presented home in a popular and convenient location, ideal for families, professionals, or those looking for a property ready to move straight into.

## **Key Features**

- End of Terrace
- Popular Location
- Three Bedooms
- Master En-suite
- Off Road Parking & Garage
- Garden
- NO ONWARD CHAIN

## **Contact Us**

### **Towers Wills Estate Agents - Yeovil**

114, Hendford Hill  
Yeovil

Somerset

BA202RF

T: 01935 577032

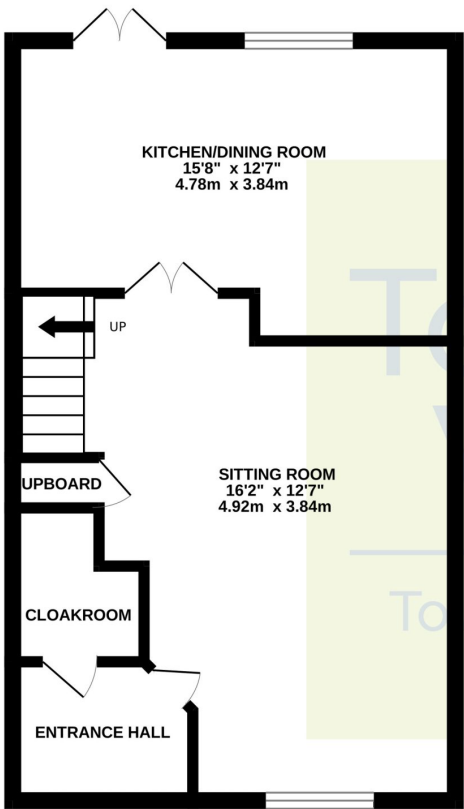
E: [info@towerswills.co.uk](mailto:info@towerswills.co.uk)



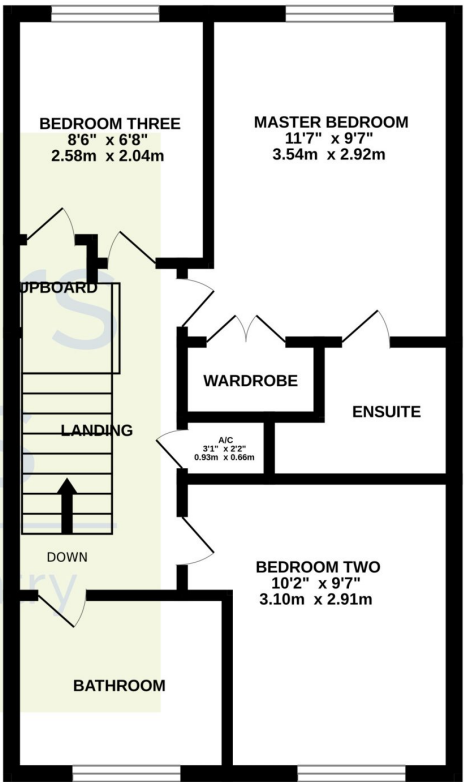


# Floor Plan

GROUND FLOOR



1ST FLOOR



Whilst every attempt has been made to ensure the accuracy of the floorplan contained here, measurements of doors, windows, rooms and any other items are approximate and no responsibility is taken for any error, omission or mis-statement. This plan is for illustrative purposes only and should be used as such by any prospective purchaser. The services, systems and appliances shown have not been tested and no guarantee as to their operability or efficiency can be given.  
Made with Metropix ©2025

Please Note No tests have been undertaken of any of the services and any intending purchasers should satisfy themselves in this regard. Towers Wills Ltd for themselves and for the vendor of this property whose agents they are, give notice that, (i) these particulars do not constitute any part of an offer or contract, (ii) all statements contained within these particulars are made without responsibility on the part of Towers Wills or the vendor, (iii) whilst made in good faith, none of the statements contained within these particulars are to be relied upon as a statement of representation or fact, (iv) any intending purchaser must satisfy him/herself by inspection or otherwise as to the correctness of each of the statements contained within these particulars, (v) the vendor does not make or give either Towers Wills or any person in their employment any authority to make or give representation or warranty whatsoever in relation to this property.

Photographs / Floor Plans Photographs are reproduced for general information and it must not be inferred that any item is included for sale with this property. Please note floor plans are not to scale and are for identification purposes only. The photographs used in these particulars may have been taken with the use of a wide angle lens. If you have any queries as to the size of the accommodation or plot, please address these with the agent prior to making an appointment to view

**Towers Wills**

The White House, 114 Hendford Hill, Yeovil BA20 2RF

Yeovil 01935 577032 / South Petherton 01460 298530

[info@towerswills.co.uk](mailto:info@towerswills.co.uk) | [www.towerswills.co.uk](http://www.towerswills.co.uk)