

# Towers Wills

Town & Country

📞 01935 577 032 | 01460 298 530 | ✉ info@towerswills.co.uk



## 23, Watercombe Heights, Yeovil, Somerset BA20 2TQ

**£475,000**

Towers Wills welcome to the market an immaculately presented four/five-bedroom detached family home tucked away in a quiet and sought-after cul-de-sac, backing onto woodland. Offering spacious and versatile accommodation, including a dual-aspect lounge/diner, well-appointed kitchen/breakfast room, a versatile ground-floor bedroom/snug/office with shower room, and four further bedrooms upstairs. Outside benefits from ample off-road parking, garage and a generous corner plot garden with patio, decking, summer house and pleasant woodland outlook, all within easy reach of local amenities.

### Accommodation:

Tucked away at the end of a quiet and highly sought-after cul-de-sac, this immaculately presented four/five-bedroom detached family home enjoys a wonderful setting backing directly onto woodland, offering both privacy and a lovely natural outlook. Occupying a set back position the property provides an ideal balance of peaceful living while remaining conveniently close to local amenities.

The accommodation begins with a welcoming reception hallway, leading through to a spacious dual-aspect lounge/diner. This impressive living space features a bay window to the front and double-glazed patio doors opening onto the rear garden, flooding the room with natural light. There is ample space for both comfortable seating and a generous dining table, making it perfect for everyday family life as well as entertaining.

The kitchen/breakfast room is well-appointed with a comprehensive range of wall, base and drawer units, work surfacing with integrated sink and drainer, and a breakfast bar for casual dining. Integrated Bosch appliances include a double electric oven, five-ring gas hob with cooker hood, and dishwasher. A door leads through to the utility room, which offers plumbing for a washing machine, space for a freestanding freezer, along with access to the side of the property and the ground-floor shower room.

To the ground floor is a versatile bedroom/snug/office, created from a converted garage, which conveniently links to the shower room. This space is ideal as a guest bedroom, additional reception room, or for those seeking ground-floor living. The shower room comprises a shower cubicle, wash hand basin with vanity unit, and WC.

To the first floor are four well-proportioned bedrooms, with the principal bedroom being a particularly generous room benefiting from doors leading to its own en-suite. The remaining three bedrooms are served by a family bathroom.

### Outside:

Externally, the property continues to impress. To the front is a driveway providing ample off-road parking. The rear garden enjoys the advantages of a generous corner plot, featuring a patio area, lawn, and a decked section with a summer house (fully insulated with electric points), all enjoying a pleasant outlook over the adjoining woodland. Steps lead down to a stone-chipped area, creating further usable outdoor space.

### Situation:

Watercombe Heights is ideally positioned for local amenities, including supermarkets and a nearby petrol station with Marks & Spencer store, making this a superb family home in a truly desirable location.

## Key Features

- Sought-after Location
- Immaculately Presented
- Detached
- Four/Five Bedrooms
- Master En-suite
- Driveway & Garage
- Gardens

## Contact Us

### Towers Wills Estate Agents - Yeovil

114, Hendford Hill  
Yeovil

Somerset

BA202RF

T: 01935 577032

E: [info@towerswills.co.uk](mailto:info@towerswills.co.uk)

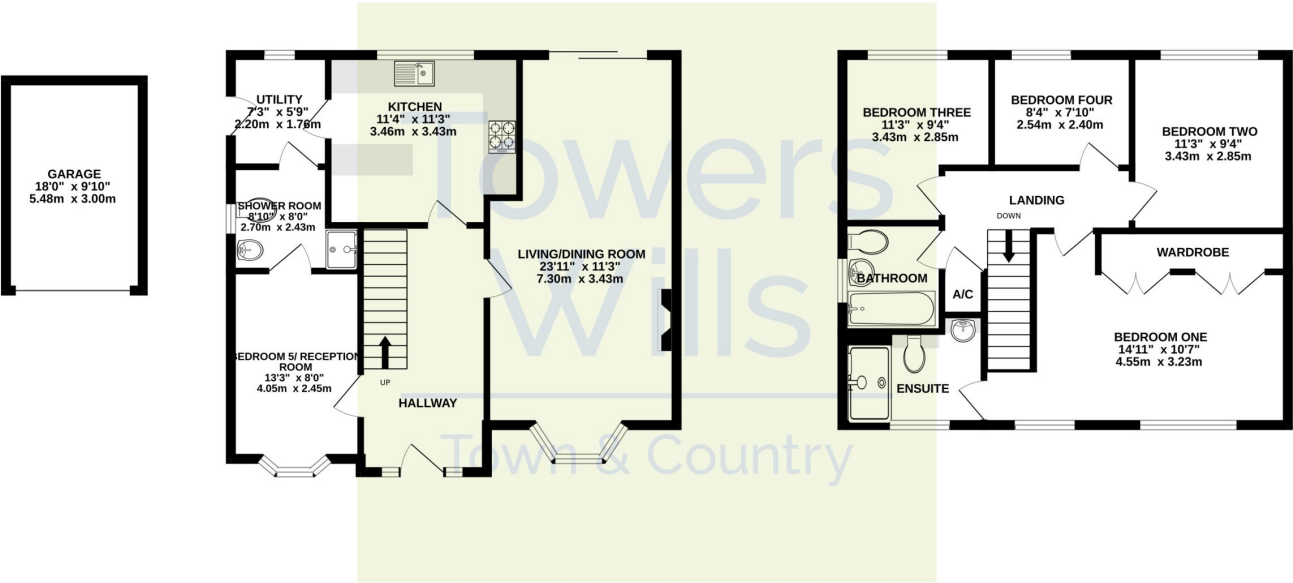




# Floor Plan

GROUND FLOOR

1ST FLOOR



Whilst every attempt has been made to ensure the accuracy of the floorplan contained here, measurements of doors, windows, rooms and any other items are approximate and no responsibility is taken for any error, omission or mis-statement. This plan is for illustrative purposes only and should be used as such by any prospective purchaser. The services, systems and appliances shown have not been tested and no guarantee as to their operability or efficiency can be given.  
Made with Metropix ©2026

Please Note No tests have been undertaken of any of the services and any intending purchasers should satisfy themselves in this regard. Towers Wills Ltd for themselves and for the vendor of this property whose agents they are, give notice that, (i) these particulars do not constitute any part of an offer or contract, (ii) all statements contained within these particulars are made without responsibility on the part of Towers Wills or the vendor, (iii) whilst made in good faith, none of the statements contained within these particulars are to be relied upon as a statement of representation or fact, (iv) any intending purchaser must satisfy him/herself by inspection or otherwise as to the correctness of each of the statements contained within these particulars, (v) the vendor does not make or give either Towers Wills or any person in their employment any authority to make or give representation or warranty whatsoever in relation to this property.

Photographs / Floor Plans Photographs are reproduced for general information and it must not be inferred that any item is included for sale with this property. Please note floor plans are not to scale and are for identification purposes only. The photographs used in these particulars may have been taken with the use of a wide angle lens. If you have any queries as to the size of the accommodation or plot, please address these with the agent prior to making an appointment to view