

# Towers Wills

Town & Country

📞 01935 577 032 | 01460 298 530 | ✉ info@towerswills.co.uk



**35, Percy Road, Yeovil, Somerset BA21 5AJ**

**£200,000**

Towers Wills welcome to the market a well presented three bedroom family home, situated in a popular residential location. Accommodation briefly comprises: Hallway, three reception rooms, three bedrooms, utility/ WC, bathroom & rear garden.

**Accommodation:**

A charming Victorian home offering flexible living in a convenient town setting

This attractive three-bedroom Victorian mid-terrace home blends period character with versatile, modern-day living, ideally positioned within easy reach of Yeovil town centre and its wide range of amenities.

A welcoming reception hallway sets the tone on arrival. To the front of the property is a bay-fronted living room, rich in character and featuring a fireplace; currently utilised as a ground-floor bedroom, this space offers excellent flexibility to suit a variety of lifestyles.

The heart of the home lies to the rear, where a spacious open-plan kitchen–diner and sitting area provides a wonderful hub for everyday living and entertaining. The kitchen is fitted with a comprehensive range of wall, base and drawer units with ample work surfacing, and space for a fridge/freezer. The dining area enjoys a pleasant outlook over the rear garden, creating a light and sociable environment. Leading off the dining area is a practical utility room with WC and wash basin.

To the first floor, the property continues to impress with three good-sized bedrooms and a generously proportioned family bathroom.

**Outside:**

Outside, the enclosed rear garden is ideal for both relaxation and outdoor dining, being predominantly landscaped for low maintenance with a patio seating area, garden shed and an additional area laid to stone chippings.

**Location:**

Percy Road is conveniently located for Yeovil town centre, which offers a comprehensive range of shopping, leisure and dining facilities, along with supermarkets, cafes and high-street retailers. The town benefits from good transport links, schooling for all ages, and recreational amenities including parks, gyms and cultural attractions, making it a popular choice for families, professionals and investors alike.

A characterful home with flexible accommodation, well-suited to a wide range of buyers, in a well-connected

## Key Features

- Terraced Property
- Well Presented Throughout
- Three Bedrooms
- Two Reception Rooms
- Rear Garden

## Contact Us

**Towers Wills Estate  
Agents - Yeovil**

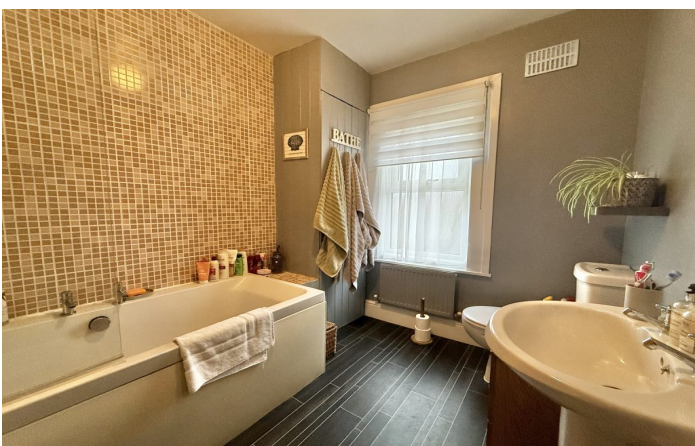
114, Hendford Hill  
Yeovil

Somerset  
BA202RF

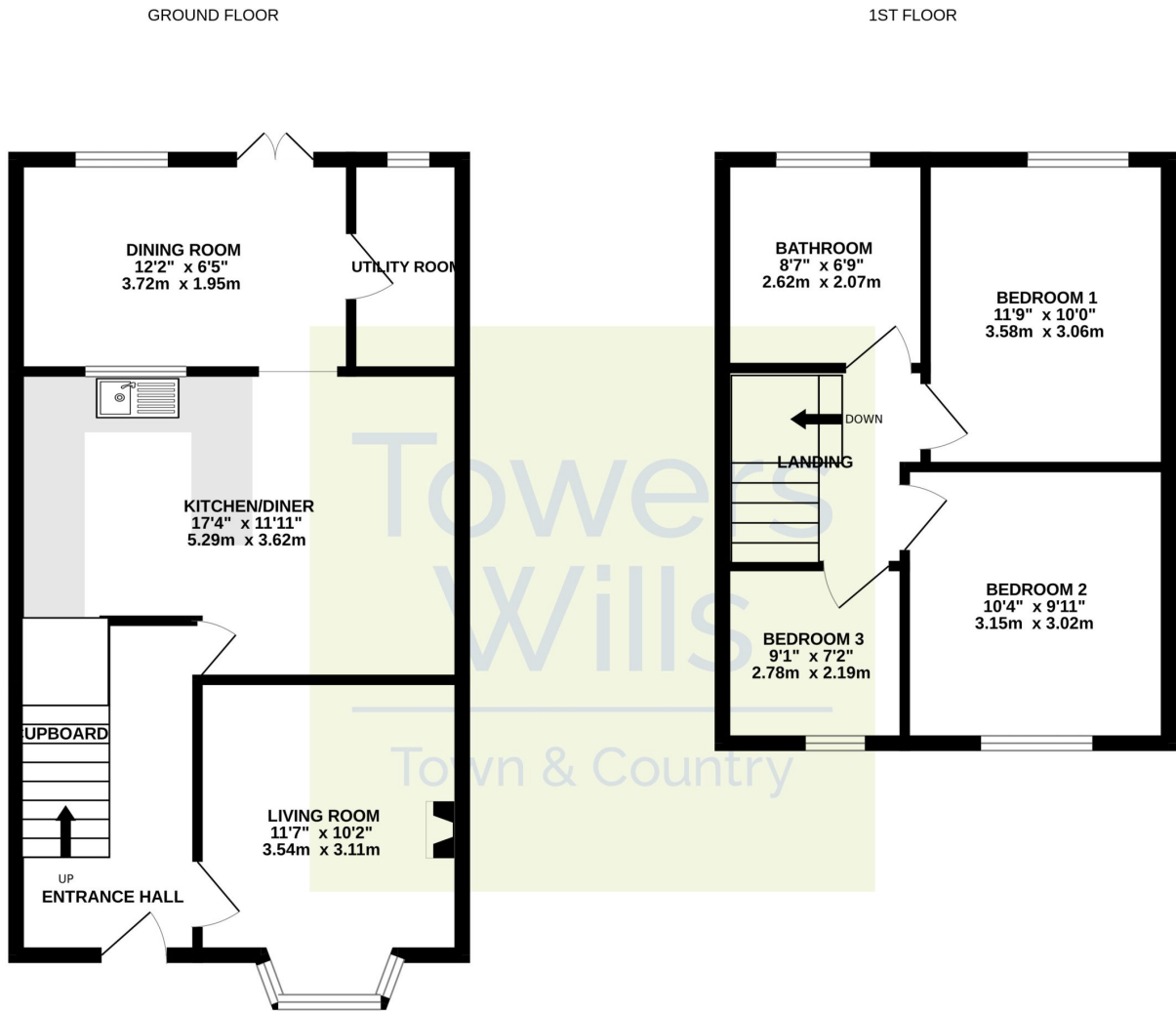
T: 01935 577032

E: [info@towerswills.co.uk](mailto:info@towerswills.co.uk)





# Floor Plan



Whilst every attempt has been made to ensure the accuracy of the floorplan contained here, measurements of doors, windows, rooms and any other items are approximate and no responsibility is taken for any error, omission or mis-statement. This plan is for illustrative purposes only and should be used as such by any prospective purchaser. The services, systems and appliances shown have not been tested and no guarantee as to their operability or efficiency can be given.  
Made with Metropix ©2025

Please Note No tests have been undertaken of any of the services and any intending purchasers should satisfy themselves in this regard. Towers Wills Ltd for themselves and for the vendor of this property whose agents they are, give notice that, (i) these particulars do not constitute any part of an offer or contract, (ii) all statements contained within these particulars are made without responsibility on the part of Towers Wills or the vendor , (iii) whilst made in good faith, none of the statements contained within these particulars are to be relied upon as a statement of representation or fact , (iv) any intending purchaser must satisfy him/herself by inspection or otherwise as to the correctness of each of the statements contained within these particulars, (v) the vendor does not make or give either Towers Wills or any person in their employment any authority to make or give representation or warranty whatsoever in relation to this property.

Photographs / Floor Plans Photographs are reproduced for general information and it must not be inferred that any item is included for sale with this property. Please note floor plans are not to scale and are for identification purposes only. The photographs used in these particulars may have been taken with the use of a wide angle lens. If you have any queries as to the size of the accommodation or plot, please address these with the agent prior to making an appointment to view