

Towers Wills

Town & Country

📞 01935 577 032 | 01460 298 530 | ✉ info@towerswills.co.uk



Flat 4, 93 Hendford Hill, Yeovil, Somerset BA20 2RE **£200,000**

Towers Wills are pleased to offer to market this spacious, share of freehold, two double bedroom apartment with beautiful communal gardens and views over to Ninesprings. The property briefly comprises, entrance hall, lounge, updated kitchen and bathroom, two double bedrooms, extensive storage space and parking.

Entrance Hall

Door to the front.

Lounge 5.41m x 3.96m

Double glazed windows to front x 3, feature fireplace, tv point, exposed wooden floorboards and radiator.

Kitchen 3.09m x 2.69m

Modern fitted kitchen comprising a range of wall, base and draw units, space for a washing machine, space for oven with cooker hood over, space fridge/freezer, single bowel stainless steel sink with drainer and mixer tap, radiator, a cupboard housing gas boiler and two double glazed windows to side.

Hallway

Cupboard with power and light, storage cupboard with shelving and a pantry.

Bedroom One 5.33m x 3.66m

Three double glazed windows to front, feature fireplace and radiator.

Bedroom Two 4.09m x 3.17m

Double glazed door to the front and a radiator.

Bathroom 2.22m x 1.77m

A recently fitted bathroom suite comprising roll top free standing bath with a mixer tap, W.C, wash hand basin, heated towel rail and a double glazed window to the side.

Outside

Outside you will find a large and well kept communal garden mainly laid to lawn with a mixture of mature hedging and trees and space for a shed. There is a shared parking area for the building.

Key Features

- Ground Floor Flat
- Spacious Accommodation
- Two Double Bedrooms
- Communal Gardens
- Communal Parking

Contact Us

Towers Wills Estate
Agents - Yeovil

114, Hendford Hill
Yeovil

Somerset
BA202RF

T: 01935 577032

E: info@towerswills.co.uk

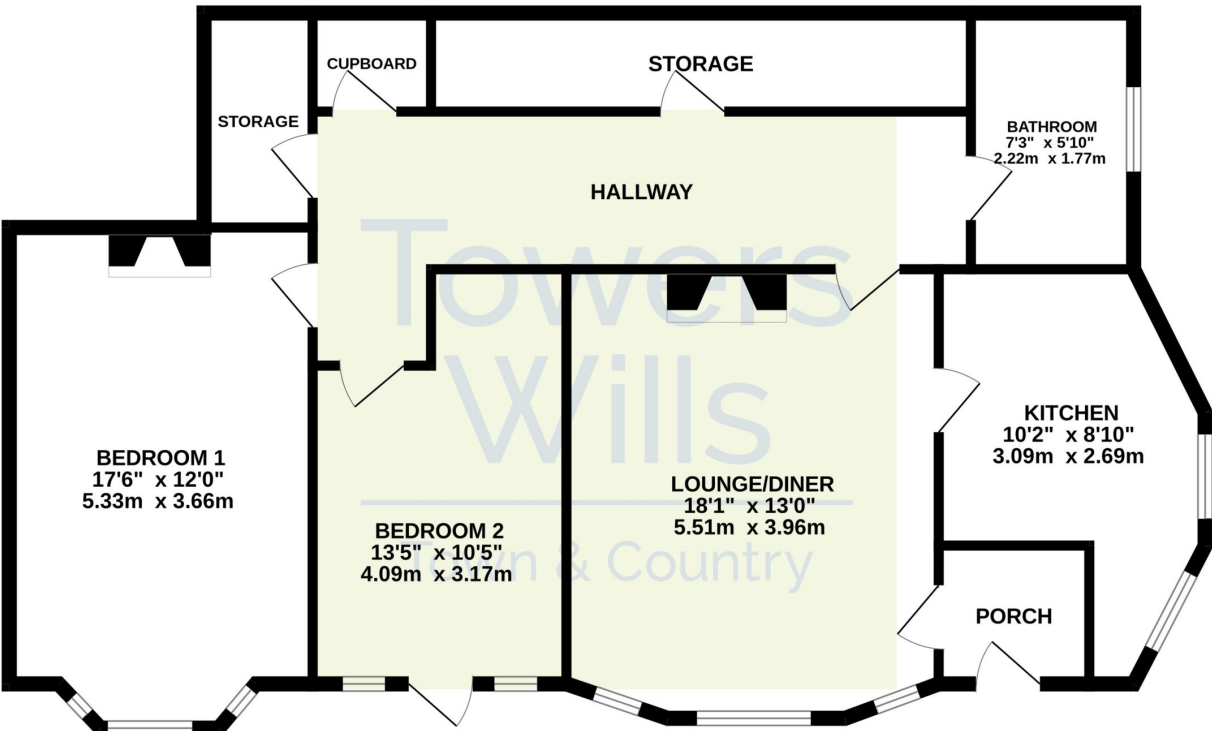
Energy Efficiency

Score	Energy rating	Current	Potential
92+	A		
81-91	B		
69-80	C		78 C
55-68	D	63 D	
39-54	E		
21-38	F		
1-20	G		



Floor Plan

GROUND FLOOR



Whilst every attempt has been made to ensure the accuracy of the floorplan contained here, measurements of doors, windows, rooms and any other items are approximate and no responsibility is taken for any error, omission or mis-statement. This plan is for illustrative purposes only and should be used as such by any prospective purchaser. The services, systems and appliances shown have not been tested and no guarantee as to their operability or efficiency can be given.
Made with Metropix ©2025

Please Note No tests have been undertaken of any of the services and any intending purchasers should satisfy themselves in this regard. Towers Wills Ltd for themselves and for the vendor of this property whose agents they are, give notice that, (i) these particulars do not constitute any part of an offer or contract, (ii) all statements contained within these particulars are made without responsibility on the part of Towers Wills or the vendor , (iii) whilst made in good faith, none of the statements contained within these particulars are to be relied upon as a statement of representation or fact , (iv) any intending purchaser must satisfy him/herself by inspection or otherwise as to the correctness of each of the statements contained within these particulars, (v) the vendor does not make or give either Towers Wills or any person in their employment any authority to make or give representation or warranty whatsoever in relation to this property.

Photographs / Floor Plans Photographs are reproduced for general information and it must not be inferred that any item is included for sale with this property. Please note floor plans are not to scale and are for identification purposes only. The photographs used in these particulars may have been taken with the use of a wide angle lens. If you have any queries as to the size of the accommodation or plot, please address these with the agent prior to making an appointment to view

Towers Wills

The White House, 114 Hendford Hill, Yeovil BA20 2RF

Yeovil 01935 577032 / South Petherton 01460 298530

info@towerswills.co.uk | www.towerswills.co.uk