

Brimsmore Phase 7.1

The Marnhull

4 bedroom home



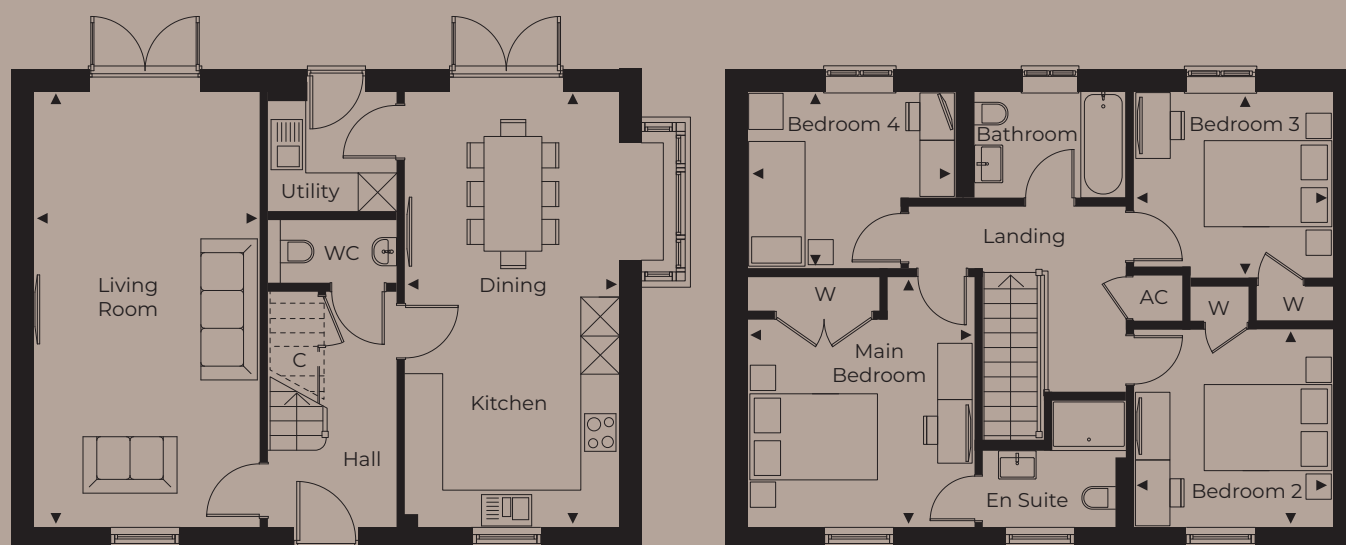
CGI shows plot 261

WYATT
HOMES

Brimsmore Phase 7.1

The Marnhull

4 bedroom home



Ground Floor

Kitchen/Dining	3.39m x 6.93m	11' 1" x 22' 9"
Living Room	3.59m x 6.93m	11' 9" x 22' 9"

First Floor

Main Bedroom (incl. wardrobe)	3.61m x 3.99m	11' 10" x 13' 1"
Bedroom 2	3.11m x 3.15m	10' 3" x 10' 4"
Bedroom 3	3.11m x 2.97m	10' 3" x 9' 9"
Bedroom 4	3.31m x 2.81m	10' 10" x 9' 3"

Total Floor Area: 129m² 1388ft²

Disclaimer: Computer generated images, floor plans, configuration and layouts are purely indicative, intended for guidance only and should not be relied upon. External finishes may vary, please clarify with your Sales Advisor and refer to drawings in the sales office.