





**Towers
Wills**

Town & Country

8 Underdown, Compton Road, Yeovil, Somerset, BA21 5BU

£500,000

 01935 577 032 | 01460 298 530 |  info@towerswills.co.uk



Towers Wills welcome to the market, this spacious detached fine family home, with rural views to both the front and rear and situated on the Somerset/Dorset border, with easy access to Sherborne and Yeovil. The property briefly comprises; reception hallway, cloakroom/w.c, living room, kitchen/diner, two conservatories, five bedrooms, en-suite, family bathroom, driveway and front and rear gardens.

- * Spacious Detached**
- * Countryside Views**
- * Five Bedrooms**
- * Master En-suite**
- * Two Conservatories**
- * Driveway & Garage**
- * Delightful Rear Garden**
- * Early Viewing Advised**





Porch

With double glazed door to the front, gas central heating boiler and door to hallway.

Reception Hallway

With double glazed door to the front, radiator and stairs to the first floor.

Cloakroom/w.c

Comprising wash hand basin, w.c and extractor fan.

Living Room

A particularly spacious, dual aspect family living area with glazed double doors from reception hallway, double glazed window to the front, double glazed window to the rear, two radiators, gas fireplace with stone surround and double glazed patio doors through to the conservatory.

Conservatory

With a pleasant outlook onto the rear garden, wall mounted gas fire, tiled floor and double glazed patio doors opening onto the patio area.



Kitchen

Comprising of a range of wall, base and drawer units, work surfacing with inset sink/drain, breakfast bar, integrated electric oven, integrated electric hob with cookerhood over, space for under counter fridge, space and plumbing for washing machine, space for tumble dryer, space for additional fridge/freezer, radiator, double glazed window to the rear and being open plan to the dining room.

Dining Room

With patio doors through to the conservatory and door to integral garage.

Conservatory

Once again, with a pleasant outlook onto the rear garden, double glazed doors opening onto the patio area, tiled floor and electric panel heater.

First Floor Landing

Stairs from reception hallway, double glazed window to the front, loft access and airing cupboard.



Bedroom One

Double glazed window to the rear with countryside views, radiator, fitted wardrobes and drawer units and door to en-suite.

En-suite

Comprising of double shower cubicle, wash hand basin, w.c, vanity unit and double glazed window to the front.

Bedroom Two

Double glazed window to the rear with countryside views, radiator and fitted wardrobes and drawers.

Bedroom Three

Double glazed window to the rear with countryside views, radiator and fitted wardrobes and drawers.

Bedroom Four

Double glazed window to the front with countryside views and radiator.



Bedroom Five/Study

Double glazed window to the rear with countryside views and radiator.

Bathroom

Suite comprising bath with shower over, wash hand basin with vanity unit under, w.c, heated towel rail, tiling and double glazed window to the front.

Outside

To the front of the property is a driveway providing off road parking for four/five vehicles, area of front garden, stocked with a variety of plants, trees and shrubs.

Rear Garden

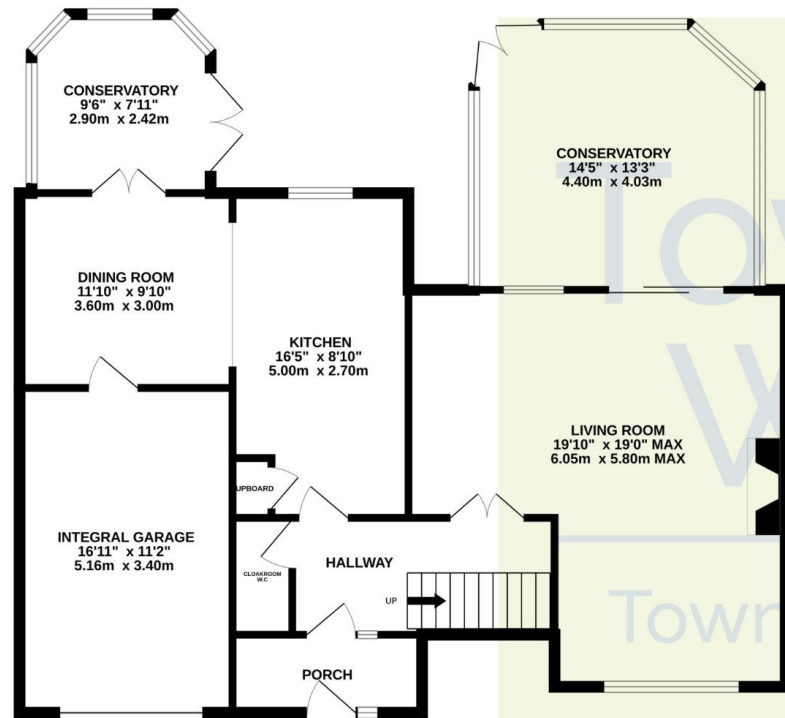
To the rear of the property, a south facing garden, backing onto fields, is majority laid to lawn with patio area, large garden shed, greenhouse, outside tap and outside lights.

Agents Note

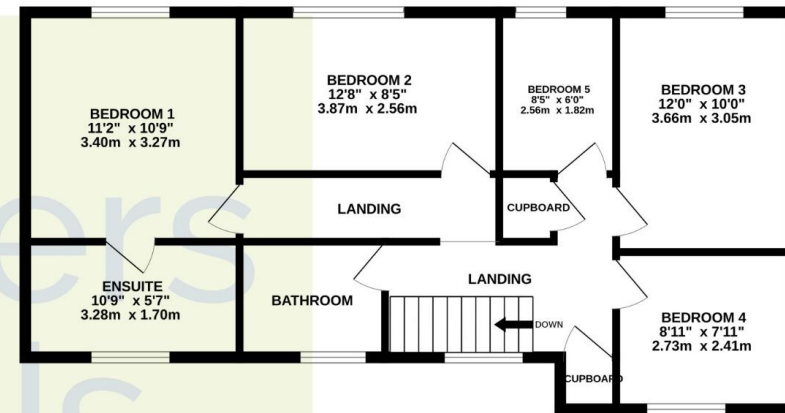
The property has solar panels which are included with the sale.



GROUND FLOOR



1ST FLOOR



Whilst every attempt has been made to ensure the accuracy of the floorplan contained here, measurements of doors, windows, rooms and any other items are approximate and no responsibility is taken for any error, omission or mis-statement. This plan is for illustrative purposes only and should be used as such by any prospective purchaser. The services, systems and appliances shown have not been tested and no guarantee as to their operability or efficiency can be given.
Made with Metropix ©2025

Score	Energy rating	Current	Potential
92+	A		
81-91	B	84 B	88 B
69-80	C		
55-68	D		
39-54	E		
21-38	F		
1-20	G		

T: 01935 577032 E: info@towerswills.co.uk

The White House 114 Hendford Hill, Yeovil, Somerset BA20 2RF

www.towerswills.co.uk

Please Note No tests have been undertaken of any of the services and any intending purchasers should satisfy themselves in this regard. Towers Wills Ltd for themselves and for the vendor of this property whose agents they are, give notice that, (i) these particulars do not constitute any part of an offer or contract, (ii) all statements contained within these particulars are made without responsibility on the part of Towers Wills or the vendor, (iii) whilst made in good faith, none of the statements contained within these particulars are to be relied upon as a statement of representation or fact, (iv) any intending purchaser must satisfy him/herself by inspection or otherwise as to the correctness of each of the statements contained within these particulars, (v) the vendor does not make or give either Towers Wills or any person in their employment any authority to make or give representation or warranty whatsoever in relation to this property. Photographs / Floor Plans Photographs are reproduced for general information and it must not be inferred that any item is included for sale with this property. Please note floor plans are not to scale and are for identification purposes only. The photographs used in these particulars may have been taken with the use of a wide angle lens. If you have any queries as to the size of the accommodation or plot, please address these with the agent prior to making an appointment to view.