

# Towers Wills

Town & Country

📞 01935 577 032 | 01460 298 530 | ✉ info@towerswills.co.uk



**5, Clarks Close, Yeovil, Somerset BA22 8TP**

**£215,000**

Towers Wills are pleased to welcome to market this well-presented, two double bedroom terraced property situated in a quiet cul-de-sac position, offering convenient access to many local amenities. Property briefly comprises of entrance hall, kitchen, lounge/diner, two double bedrooms, family bathroom, enclosed rear garden and garage.

Entrance Hall

Double glazed door to front, doors to ground floor accommodation, stairs leading to first floor, storage cupboard housing washing machine and radiator.

Kitchen 2.21 x 2.57

A modern fitted kitchen comprising of wall, base and drawer units with wooden countertops over, single bowl sink with mixer tap, integrated oven with induction hob and cooker hood over, integrated fridge/freezer, integrated dishwasher, laminate flooring and double glazed window to front.

Lounge/Diner 4.88 x 4.67

Double glazed patio doors to garden, double glazed window to rear, laminate flooring and radiator.

First Floor Landing

Doors to first floor accommodation, storage cupboard and loft hatch.

Bedroom One 3.63 x 4.67

X2 double glazed windows to front, fitted wardrobes and radiator.

Bedroom Two 2.69 x 2.48

Double glazed window to rear, integrated wardrobe currently being used as a space for desk and radiator.

Family Bathroom 1.76 x 2.05

A suite comprising of W.C, wash hand basin, bath with shower over, partly tiled walls, extractor fan, radiator and double-glazed window to rear.

Garden

An enclosed rear garden benefitting from patio area abutting the house, an area of artificial grass, steps leading to rear gate and power.

Garage

Situated in a block with up and over door.

Key Features

- Well Presented Throughout
- Two Double Bedrooms
- Terraced Property
- Quiet cul-de-sac position
- Close to Local Amenities

Contact Us

**Towers Wills Estate Agents - Yeovil**  
114, Hendford Hill  
Yeovil  
Somerset  
BA202RF  
T: 01935 577032  
E: info@towerswills.co.uk

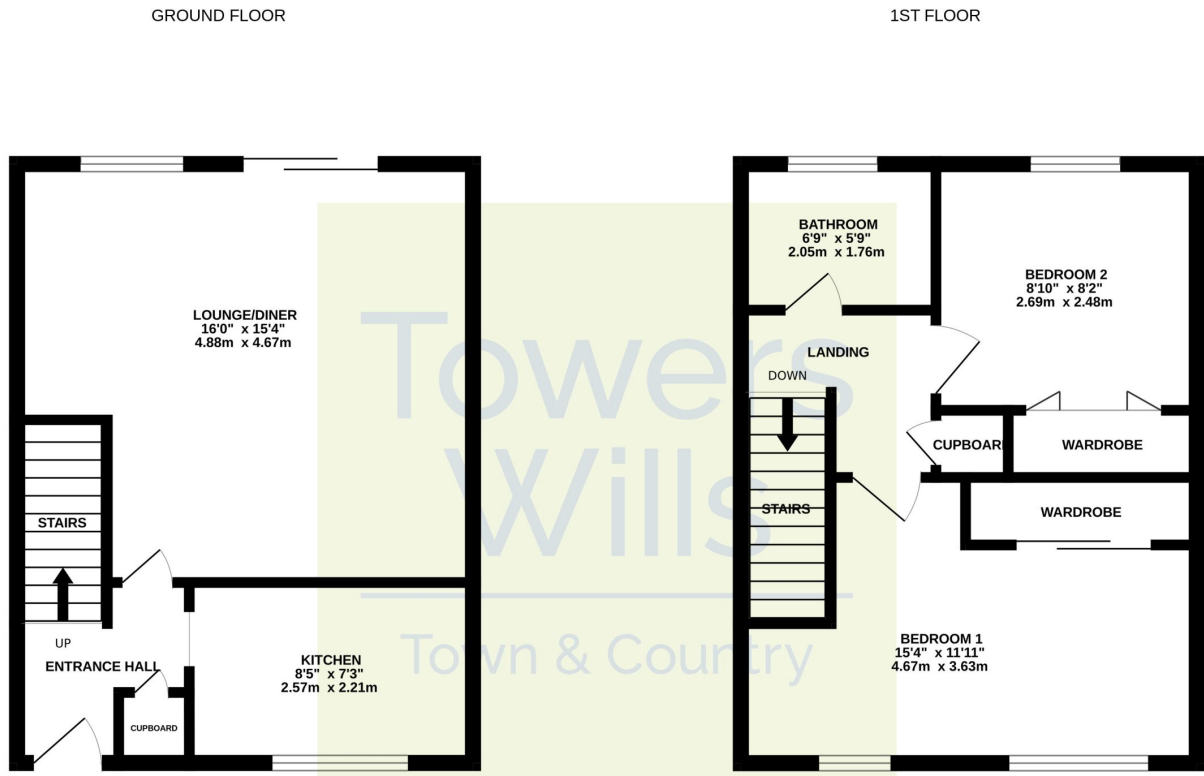
Energy Efficiency

Score	Energy rating	Current	Potential
92+	A		
81-91	B		87 B
69-80	C	72 C	
55-68	D		
39-54	E		
21-38	F		
1-20	G		





# Floor Plan



Whilst every attempt has been made to ensure the accuracy of the floorplan contained here, measurements of doors, windows, rooms and any other items are approximate and no responsibility is taken for any error, omission or mis-statement. This plan is for illustrative purposes only and should be used as such by any prospective purchaser. The services, systems and appliances shown have not been tested and no guarantee as to their operability or efficiency can be given.  
Made with Metropix ©2025

Please Note No tests have been undertaken of any of the services and any intending purchasers should satisfy themselves in this regard. Towers Wills Ltd for themselves and for the vendor of this property whose agents they are, give notice that, (i) these particulars do not constitute any part of an offer or contract, (ii) all statements contained within these particulars are made without responsibility on the part of Towers Wills or the vendor , (iii) whilst made in good faith, none of the statements contained within these particulars are to be relied upon as a statement of representation or fact , (iv) any intending purchaser must satisfy him/herself by inspection or otherwise as to the correctness of each of the statements contained within these particulars, (v) the vendor does not make or give either Towers Wills or any person in their employment any authority to make or give representation or warranty whatsoever in relation to this property.

Photographs / Floor Plans Photographs are reproduced for general information and it must not be inferred that any item is included for sale with this property. Please note floor plans are not to scale and are for identification purposes only. The photographs used in these particulars may have been taken with the use of a wide angle lens. If you have any queries as to the size of the accommodation or plot, please address these with the agent prior to making an appointment to view