

# Towers Wills

Town & Country

📞 01935 577 032 | 01460 298 530 | ✉ info@towerswills.co.uk



**30, Cromwell Road, Yeovil, Somerset BA21 5AW**

**Offers Over £140,000**

Towers Wills welcome to the market this two bedroom terrace property, in need of modernisation throughout and briefly comprises; reception hallway, lounge/diner, kitchen, two bedrooms, bathroom and rear garden. NO ONWARD CHAIN.

### Reception Hallway

Double glazed door to the front and radiator.

**Lounge/Diner** 7.40m x 3.41m

### Lounge Area

With bay window to the front and gas fireplace/back boiler.

### Dining Area

With window to the rear and radiator.

**Kitchen** 4.80m x 2.52m

Comprising of a range of wall, base and drawer units, work surfacing with inset sink/drain, under stairs storage cupboard, integrated electric oven, integrated gas hob with cookerhood over, plumbing for washing machine, space for fridge/freezer, double glazed door to the rear garden and double glazed windows to both the rear and side.

### First Floor Landing

Stairs from reception hallway, airing cupboard and loft access.

**Bedroom One** 3.07m x 4.60m

Two double glazed windows to the front and radiator.

**Bedroom Two** 2.75m x 3.66m

Double glazed window to the rear and radiator.

**Bathroom** 2.54m x 3.26m

Comprising of bath with shower over, wash hand basin, w.c, tiling, radiator and window to the rear.

### Rear Garden

There is an enclosed rear garden with rear access.

## Key Features

- NO ONWARD CHAIN
- In Need of Modernisation Throughout
- Terrace
- Two Bedrooms
- Rear Garden

## Contact Us

### Towers Wills Estate Agents - Yeovil

114, Hendford Hill  
Yeovil

Somerset

BA202RF

T: 01935 577032

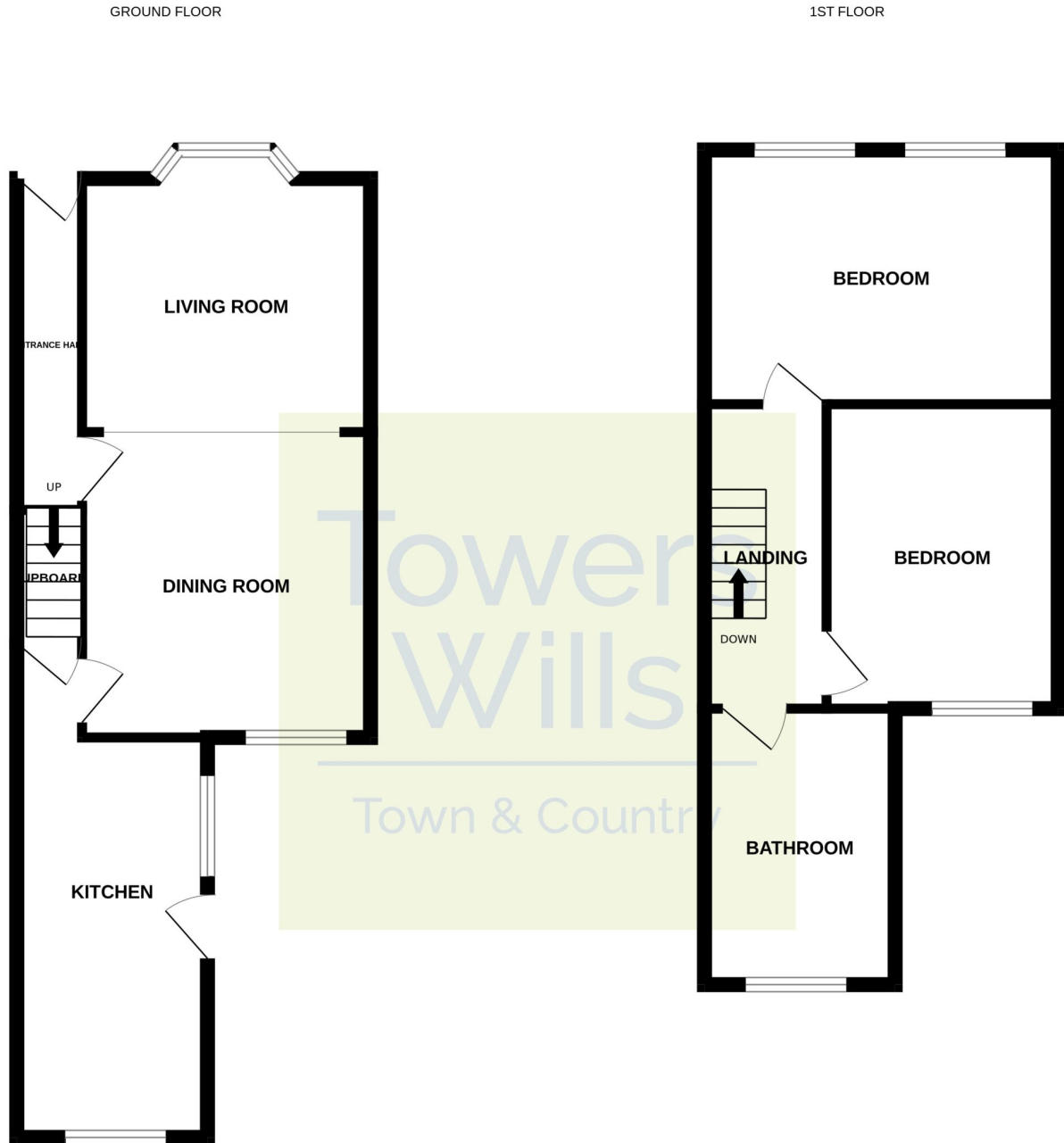
E: [info@towerswills.co.uk](mailto:info@towerswills.co.uk)

## Energy Efficiency

Score	Energy rating	Current	Potential
92+	A		
81-91	B		87 B
69-80	C		
55-68	D		
39-54	E	48 E	
21-38	F		
1-20	G		



# Floor Plan



Whilst every attempt has been made to ensure the accuracy of the floorplan contained here, measurements of doors, windows, rooms and any other items are approximate and no responsibility is taken for any error, omission or mis-statement. This plan is for illustrative purposes only and should be used as such by any prospective purchaser. The services, systems and appliances shown have not been tested and no guarantee as to their operability or efficiency can be given.  
Made with Metropix ©2024

Please Note No tests have been undertaken of any of the services and any intending purchasers should satisfy themselves in this regard. Towers Wills Ltd for themselves and for the vendor of this property whose agents they are, give notice that, (i) these particulars do not constitute any part of an offer or contract, (ii) all statements contained within these particulars are made without responsibility on the part of Towers Wills or the vendor, (iii) whilst made in good faith, none of the statements contained within these particulars are to be relied upon as a statement of representation or fact, (iv) any intending purchaser must satisfy him/herself by inspection or otherwise as to the correctness of each of the statements contained within these particulars, (v) the vendor does not make or give either Towers Wills or any person in their employment any authority to make or give representation or warranty whatsoever in relation to this property.

Photographs / Floor Plans Photographs are reproduced for general information and it must not be inferred that any item is included for sale with this property. Please note floor plans are not to scale and are for identification purposes only. The photographs used in these particulars may have been taken with the use of a wide angle lens. If

**Towers Wills**

The White House, 114 Hendford Hill, Yeovil BA20 2RF

Yeovil 01935 577032 / South Petherton 01460 298530

[info@towerswills.co.uk](mailto:info@towerswills.co.uk) | [www.towerswills.co.uk](http://www.towerswills.co.uk)