

# Towers Wills

Town & Country

📞 01935 577 032 | 01460 298 530 | ✉ info@towerswills.co.uk



**19, Cook Road, Yeovil, Somerset BA21 5EX**

**Offers Over £200,000**

Towers Wills are pleased to present this terraced home situated on the eastern side of Yeovil. Well-presented throughout, the property benefits from; downstairs WC, kitchen, lounge/diner, two double bedrooms with master en-suite and family bathroom. Outside a low maintenance rear garden and garage with allocated parking space. An ideal first time buy or buy to let investment!

## Entrance Hall

Double glazed door to the front, radiator and cupboard.

## W.C

Includes wash hand basin, w.c, double glazed window to the front, radiator and extractor fan.

## Kitchen 3.10m x 1.90m

Comprising of a range of wall, base and drawer units, work surfacing with stainless steel one bowl sink drainer, double glazed window to the front, washing machine, fridge freezer, gas boiler, integrated gas hob and integrated electric oven with extractor over.

## Lounge/Diner 5.49m plus door recess x 3.87m – maximum measurements

Double glazed French doors to the rear, radiator and stairs to the first floor.

## First Floor Landing

Includes loft hatch.

## Bathroom

Suite comprising bath, wash hand basin, w.c, radiator and extractor fan.

## Bedroom One 3.78m x 3.87m – maximum measurements

Double glazed window to the rear, radiator, built-in cupboard and freestanding mirrored wardrobes.

## En-suite

Comprising shower cubicle with electric shower, wash hand basin, w.c, radiator and extractor fan.

## Bedroom Two 2.57m x 3.85m – maximum measurements

Double glazed window to the front and radiator.

## Outside

To the front of the property is a gravelled area. To the rear of the property is a patio seating area, gravel area and rear gate leading to the garage.

## Garage 5.60m x 2.54m

With 'up and over' door, double glazed window to the rear and parking for one vehicle in front of the garage.

## Agents Note

The vendor has advised Towers Wills of a Wyndham Park maintenance charge of £56 per 6 months and is able to include washing machine, fridge freezer and mirrored wardrobe in rear bedroom.

## Key Features

- Two Double Bedrooms
- Well Presented Throughout
- Popular Location
- Master En-suite
- Low Maintenance Rear Garden
- Garage & Parking

## Contact Us

### Towers Wills Estate Agents - Yeovil

114, Hendford Hill  
Yeovil

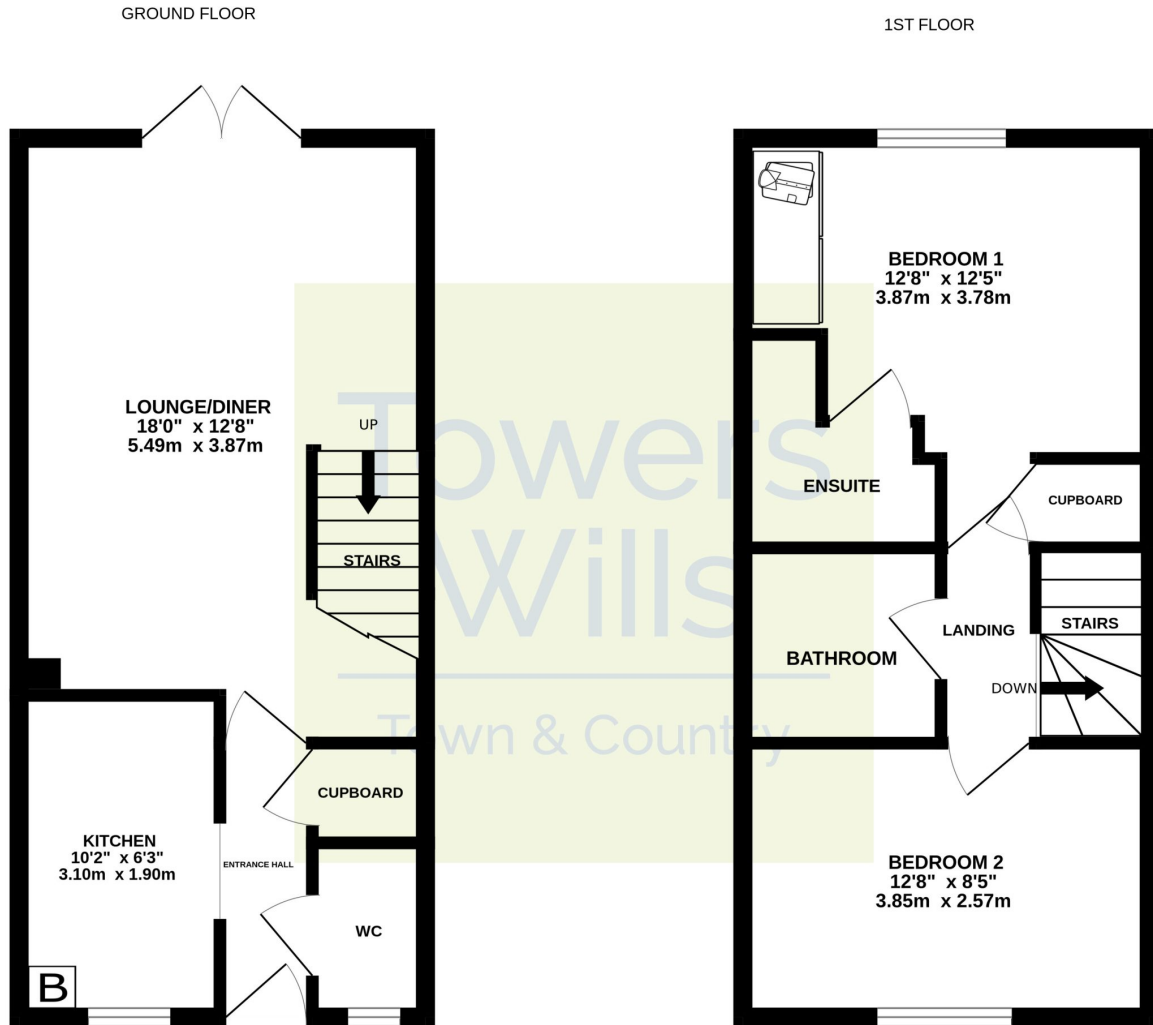
Somerset  
BA202RF

T: 01935 577032

E: [info@towerswills.co.uk](mailto:info@towerswills.co.uk)



# Floor Plan



Whilst every attempt has been made to ensure the accuracy of the floorplan contained here, measurements of doors, windows, rooms and any other items are approximate and no responsibility is taken for any error, omission or mis-statement. This plan is for illustrative purposes only and should be used as such by any prospective purchaser. The services, systems and appliances shown have not been tested and no guarantee as to their operability or efficiency can be given.  
Made with Metropix ©2024

Please Note No tests have been undertaken of any of the services and any intending purchasers should satisfy themselves in this regard. Towers Wills Ltd for themselves and for the vendor of this property whose agents they are, give notice that, (i) these particulars do not constitute any part of an offer or contract, (ii) all statements contained within these particulars are made without responsibility on the part of Towers Wills or the vendor, (iii) whilst made in good faith, none of the statements contained within these particulars are to be relied upon as a statement of representation or fact, (iv) any intending purchaser must satisfy him/herself by inspection or otherwise as to the correctness of each of the statements contained within these particulars, (v) the vendor does not make or give either Towers Wills or any person in their employment any authority to make or give representation or warranty whatsoever in relation to this property.

Photographs / Floor Plans Photographs are reproduced for general information and it must not be inferred that any item is included for sale with this property. Please note floor plans are not to scale and are for identification purposes only. The photographs used in these particulars may have been taken with the use of a wide angle lens. If you have any queries as to the size of the accommodation or plot, please address these with the agent prior to making an appointment to view

**Towers Wills**

The White House, 114 Hendford Hill, Yeovil BA20 2RF

Yeovil 01935 577032 / South Petherton 01460 298530

[info@towerswills.co.uk](mailto:info@towerswills.co.uk) | [www.towerswills.co.uk](http://www.towerswills.co.uk)