

Towers Wills

Town & Country

📞 01935 577 032 | 01460 298 530 | ✉ info@towerswills.co.uk



36, Runnymede Road, Yeovil, Somerset BA21 5SU

£200,000

Towers Wills welcome to market this three bedroom end terraced house briefly comprising of; porch, entrance hall, downstairs w.c, lounge/diner, kitchen, three bedrooms, family bathroom, rear garden and allocated parking. Situated within a popular residential area of Yeovil close to many local amenities including, shops and schools. The property also benefits from no forward chain.

Entrance Porch 0.99m x 3.06m

Double glazed door to the front, double glazed windows to the front and side and internal door to the hallway.

Entrance Hallway 4.19m x 1.77m

Stairs to the first floor, under stairs cupboard and radiator.

Downstairs w.c 0.83m x 1.72m

Comprising wash hand basin, low level w.c, radiator and double glazed window to the side.

Lounge 5.35m x 5.11m

Double glazed patio doors to the rear, double glazed window to the rear and radiator.

Kitchen 2.38m x 2.98m

Comprising of a range of wall, base and drawer units, work surfacing with stainless steel sink drainer, space for fridge freezer, space for freestanding cooker with cooker hood and double glazed window to the front.

First Floor Landing

Double glazed window to the side, storage cupboard and loft access.

Bedroom One 2.70m x 4.27m

Double glazed window to the front and radiator.

Bedroom Two 3.50m x 2.51m

Double glazed window to the rear, built-in wardrobes and radiator.

Bedroom Three 2.00m x 2.53m

Double glazed window to the rear and radiator.

Family Bathroom 2.00m x 2.03m

Comprising freestanding shower, wash hand basin, low level w.c, double glazed window to the side and radiator.

Outside

There is an enclosed low maintenance rear garden, being mainly laid to gravel with mature shrubs, large shed and gate to the allocated parking space.

Key Features

- End of Terrace
- Three Bedrooms
- Rear Garden
- Allocated Parking
- NO ONWARD CHAIN

Contact Us

**Towers Wills Estate
Agents - Yeovil**

114, Hendford Hill

Yeovil

Somerset

BA202RF

T: 01935 577032

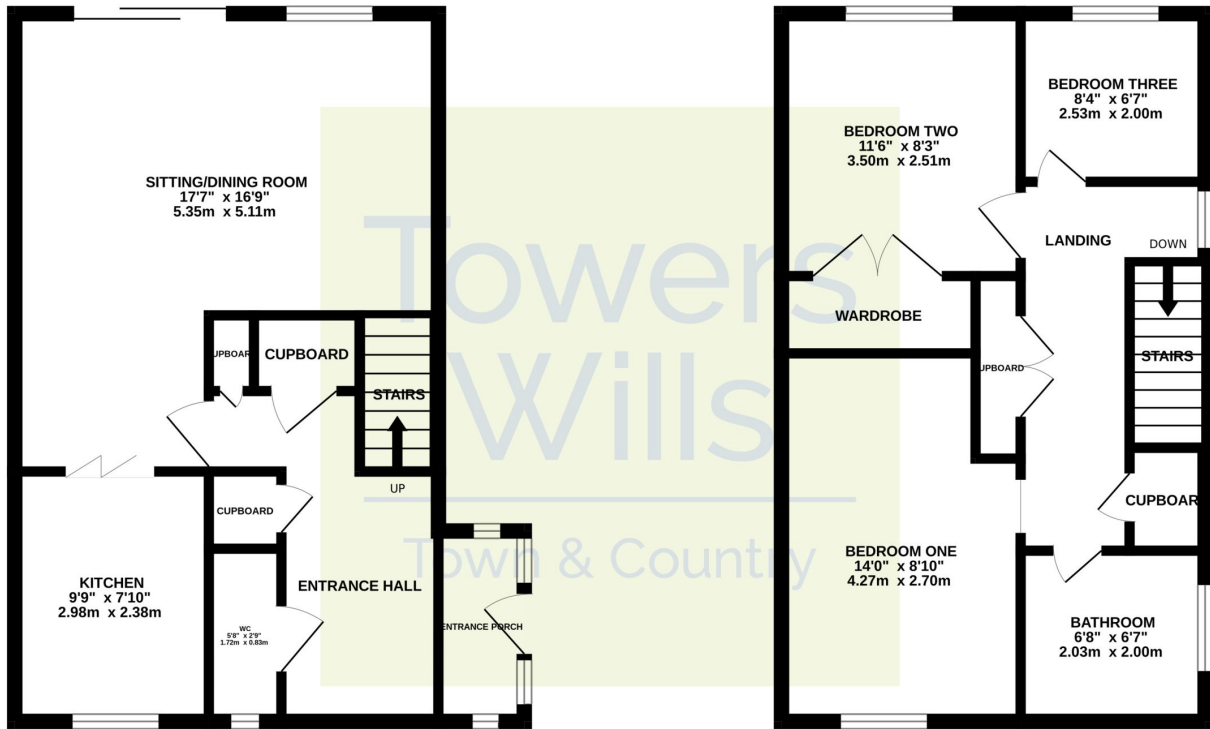
E: info@towerswills.co.uk



Floor Plan

GROUND FLOOR

1ST FLOOR



Whilst every attempt has been made to ensure the accuracy of the floorplan contained here, measurements of doors, windows, rooms and any other items are approximate and no responsibility is taken for any error, omission or mis-statement. This plan is for illustrative purposes only and should be used as such by any prospective purchaser. The services, systems and appliances shown have not been tested and no guarantee as to their operability or efficiency can be given.
Made with Metropix ©2024

Please Note No tests have been undertaken of any of the services and any intending purchasers should satisfy themselves in this regard. Towers Wills Ltd for themselves and for the vendor of this property whose agents they are, give notice that, (i) these particulars do not constitute any part of an offer or contract, (ii) all statements contained within these particulars are made without responsibility on the part of Towers Wills or the vendor, (iii) whilst made in good faith, none of the statements contained within these particulars are to be relied upon as a statement of representation or fact, (iv) any intending purchaser must satisfy him/herself by inspection or otherwise as to the correctness of each of the statements contained within these particulars, (v) the vendor does not make or give either Towers Wills or any person in their employment any authority to make or give representation or warranty whatsoever in relation to this property.

Photographs / Floor Plans Photographs are reproduced for general information and it must not be inferred that any item is included for sale with this property. Please note floor plans are not to scale and are for identification purposes only. The photographs used in these particulars may have been taken with the use of a wide angle lens. If you have any queries as to the size of the accommodation or plot, please address these with the agent prior to making an appointment to view

Towers Wills

The White House, 114 Hendford Hill, Yeovil BA20 2RF

Yeovil 01935 577032 / South Petherton 01460 298530

info@towerswills.co.uk | www.towerswills.co.uk