

Towers Wills

Town & Country

📞 01935 577 032 | 01460 298 530 | ✉ info@towerswills.co.uk



9, Lower Meadow, Ilminster, Somerset TA19 9DR

Offers Over **£200,000**

Towers Wills are pleased to bring to market this wonderful two bedroom coach house apartment, situated in the popular area of Ilminster, ideal for a First Time Buyer or Investor. The property comprises; entrance hall, lounge/diner, kitchen, family bathroom, two double bedrooms, large garage with storage area and parking for two cars.

Entrance

Double glazed door to front.

Entrance Hall

Stairs to first floor landing and radiator.

First Floor Landing

Laminate flooring, access to loft space and airing cupboard.

Lounge/Diner 3.73m x 5.62m

Laminate flooring, two double glazed windows to front, radiator and aerial point.

Kitchen 1.94m x 3.57m

Fitted with modern wall and base units, stainless steel sink and monobloc mixer tap, double glazed window to rear, four ring gas hob with built in oven under, cooker hood, tiling to splash prone areas, space for fridge freezer and radiator.

Bedroom One 2.57m x 4.02m

Laminate flooring, built in wardrobe, radiator and double glazed window to front.

Bedroom Two 3.80m x 4.14m

Laminate flooring, double glazed window to rear, built in cupboard, built in wardrobe and radiator.

Bathroom

Panel bath with shower over, low level W.C, pedestal wash hand basin, wall mounted heated towel rail and double glazed window to rear.

Garage

Power, light, roller 'up and over' door and boiler. There is currently a stud wall separating the garage however it can be removed to make room for a car.

Parking

Two allocated spaces.

Key Features

- Coach House
- Two Double Bedrooms
- Popular Location
- Large Garage
- Parking

Contact Us

Towers Wills Estate Agents - Yeovil

114, Hendford Hill

Yeovil

Somerset

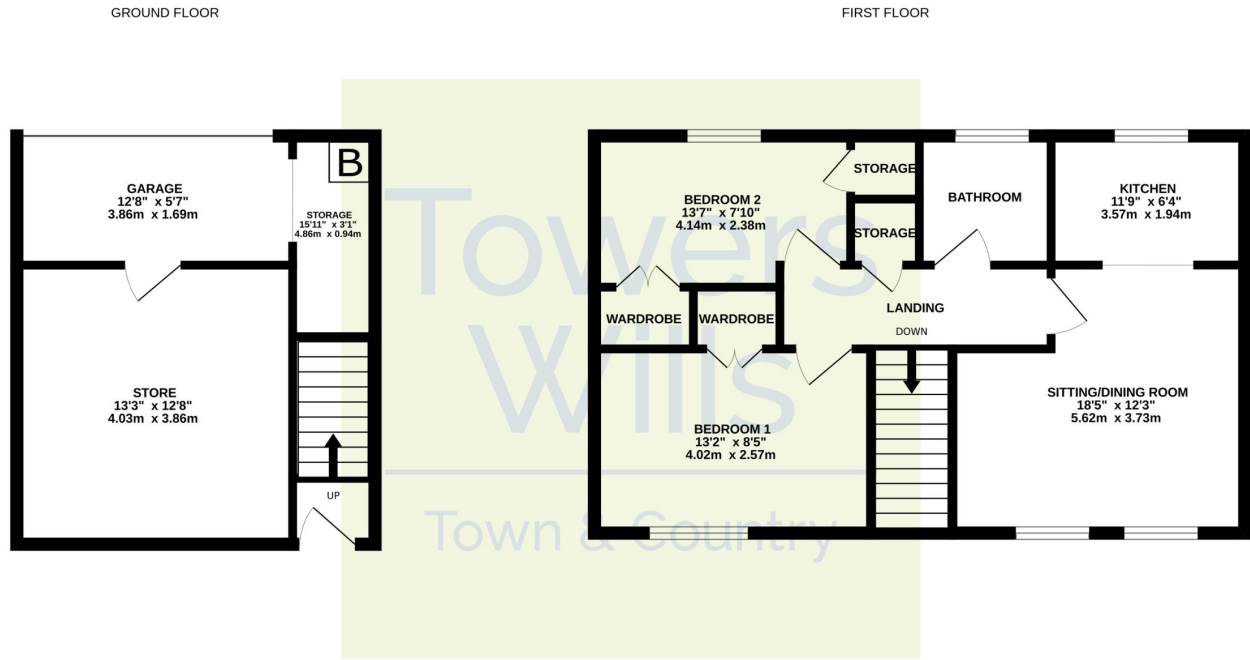
BA202RF

T: 01935 577032

E: info@towerswills.co.uk



Floor Plan



Whilst every attempt has been made to ensure the accuracy of the floorplan contained here, measurements of doors, windows, rooms and any other items are approximate and no responsibility is taken for any error, omission or mis-statement. This plan is for illustrative purposes only and should be used as such by any prospective purchaser. The services, systems and appliances shown have not been tested and no guarantee as to their operability or efficiency can be given.
Made with Metropix ©2024

Please Note No tests have been undertaken of any of the services and any intending purchasers should satisfy themselves in this regard. Towers Wills Ltd for themselves and for the vendor of this property whose agents they are, give notice that, (i) these particulars do not constitute any part of an offer or contract, (ii) all statements contained within these particulars are made without responsibility on the part of Towers Wills or the vendor, (iii) whilst made in good faith, none of the statements contained within these particulars are to be relied upon as a statement of representation or fact, (iv) any intending purchaser must satisfy him/herself by inspection or otherwise as to the correctness of each of the statements contained within these particulars, (v) the vendor does not make or give either Towers Wills or any person in their employment any authority to make or give representation or warranty whatsoever in relation to this property.

Photographs / Floor Plans Photographs are reproduced for general information and it must not be inferred that any item is included for sale with this property. Please note floor plans are not to scale and are for identification purposes only. The photographs used in these particulars may have been taken with the use of a wide angle lens. If you have any queries as to the size of the accommodation or plot, please address these with the agent prior to making an appointment to view

Towers Wills

The White House, 114 Hendford Hill, Yeovil BA20 2RF

Yeovil 01935 577032 / South Petherton 01460 298530

info@towerswills.co.uk | www.towerswills.co.uk